



Tokyo International Forum ANNUAL REPORT 2014



3-5-1 Marunouchi, Chiyoda-ku, Tokyo 100-0005, Japan
Tel. +81-3-5221-9000 (Main)
<http://www.t-i-forum.co.jp/en/>

Published July 2015

President's Message

As president and CEO of Tokyo International Forum Co., Ltd., I would firstly like to take this opportunity to express our sincere gratitude for the exceptional support we received during fiscal 2014. Tokyo International Forum opened as a Tokyo Metropolitan Government-owned general cultural and information complex on the site of the former Tokyo Metropolitan Government Buildings in 1997. Today, Tokyo International Forum's facilities are highly regarded both in Japan and overseas as a convention and arts center that represents Japan and attracts more than 23 million visitors annually. In fiscal 2014, a multitude of events that covered a wide variety of genres, such as major international conferences—including the World Ophthalmology Congress (WOC) 2014 and the Annual Conference of the International Bar Association (IBA) 2014—concerts, musical and exhibitions were held. For Tokyo International Forum's own planning event operations, we leveraged the special characteristics of our facilities and helped to create a lively local ambience with such events as the 10th staging of La Folle Journée au Japon "Days of Enthusiasm" Music Festival 2014, Marunouchi Kids' Jamboree 2014, and TOKYO stylish NIGHT "REFLECTION 2014/2015." In recent years, a number of overseas cities have been expanding their facilities and upgrading their services with a view to attracting MICE business, and international competition between cities has been intensifying. Going forward, to strongly convey Tokyo's presence to the rest of Japan and across the world, we will have to further improve Tokyo International Forum's appeal, strengths and attributes as Central City MICE facility and put all our efforts into the successful staging of the Tokyo 2020 Olympic and Paralympic Games, when it is planned that Tokyo International Forum will serve as the venue for the weightlifting competition. Other indispensable moves will be the active development of our own planning event operations as a base of cultural activity and to bring life to the city and, as a large-scale facility for attracting customers, the building of a comprehensive framework toward the ongoing provision of safety and security, including the making

of enhancements to our disaster preparedness functions. Keeping in step with the kinds of changes that occur in the environments in which companies operate, we formulated our Fifth Medium-Term Management Plan in March 2015 to resolve a range of challenges that we are facing. Tokyo International Forum will be marking the 20th anniversary of its opening in 2017. We will naturally continue to play a role as an organization under the supervision of the Tokyo Metropolitan Government, will thoroughly fulfill our function as a world-leading MICE facility located in central Tokyo and convey to the world our attractiveness as a base of cultural activity and to bring life to the city. In anticipation of 2020 and beyond, we will deepen our community collaboration, while all at Tokyo International Forum will work in unison toward the steady realization of our management plan. In grateful anticipation of your continued patronage and support for our business endeavors.

President & CEO Kiyofumi Kamiyo

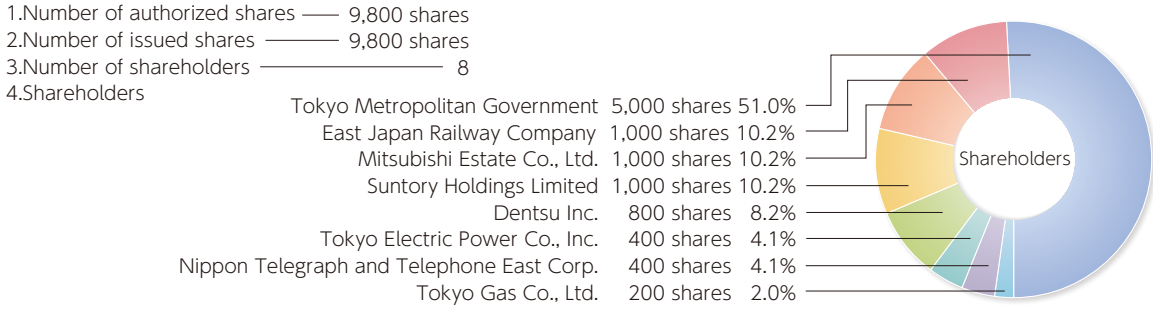


Company Profile

(as of July 1, 2015)

Name of Company	Tokyo International Forum Co., Ltd.
Address	5-1 Marunouchi 3-chome, Chiyoda-ku, Tokyo
Date established	April 4, 2003
Main business	1. Management of halls, conference rooms and other facilities of Tokyo International Forum 2. Management of the service facilities of Tokyo International Forum 3. Planning, design, execution and contracting of events for promoting international exchanges 4. Other business services related to the above
President & CEO	Kiyofumi Kamiyo
Capital	490 million yen

Share Information



Management Philosophy

As a leading convention and art center, Tokyo International Forum is a company that aims to create sensations and generate excitement by putting on display for the world the allure of the local community, Tokyo and Japan as a whole.

Management Principles

- Tokyo International Forum is a leading convention and art center that provides venues and services of the highest quality.
- Tokyo International Forum aims to be the one and only brand as a convention and art center that conveys the "now" of Tokyo and Japan.
- Tokyo International Forum contributes to the local community with a competitive and cooperative spirit, by focusing on building captivating communities in the Otemachi, Marunouchi and Yurakucho areas, the "face" of Tokyo.
- Tokyo International Forum is a venue for the dissemination of information, a symbol of the allure of Tokyo, the hustle and bustle of a town, and the passion of people.
- Tokyo International Forum delights in the happiness and satisfaction of its customers, and strives to be highly sensitive and responsive to the feelings of its customers.
- Tokyo International Forum aims to create high value added in its operations through highly transparent, efficient and highly profitable business management.

Management

President & CEO
Kiyofumi Kamiyo

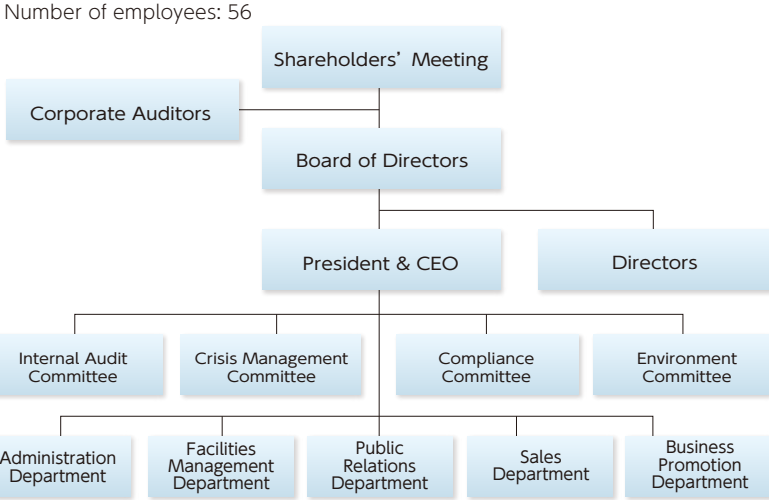
Managing Director
Akira Sawa

Director
Tomonori Uegaki

Corporate Auditor
Yosuke Matsumiya

Corporate Auditor
Atsushi Kaise

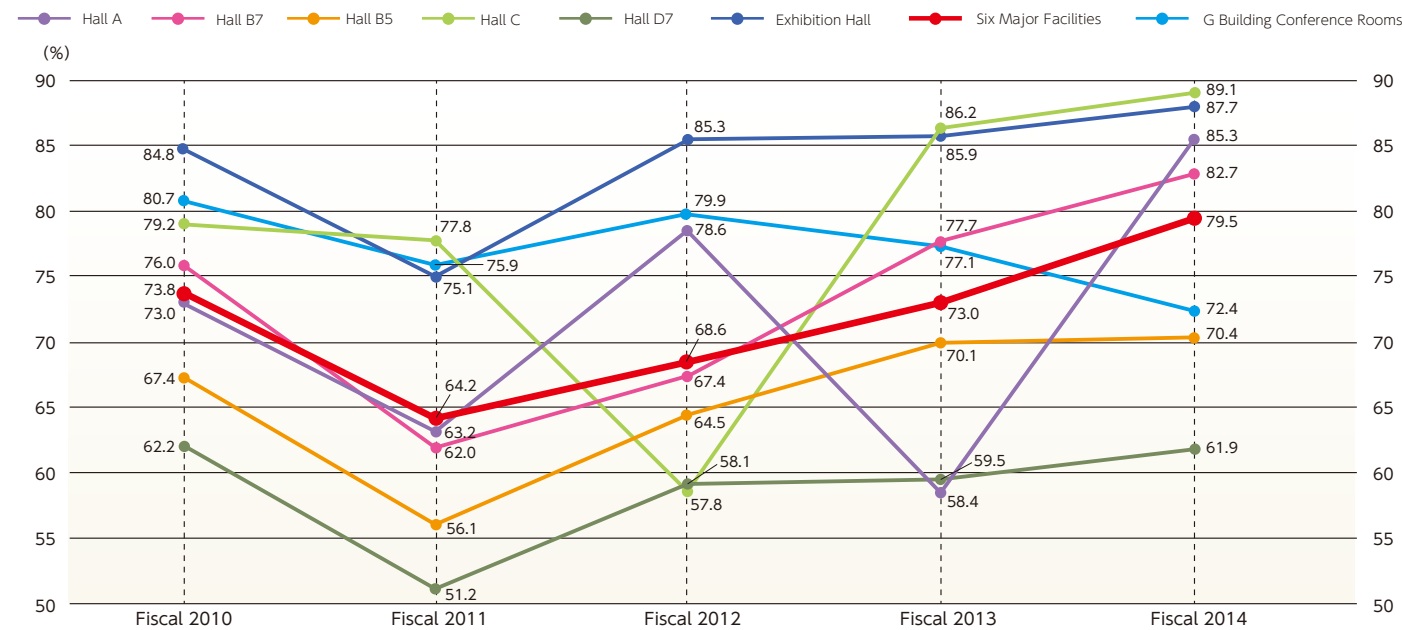
Organization Chart



Fiscal 2014 Business Report

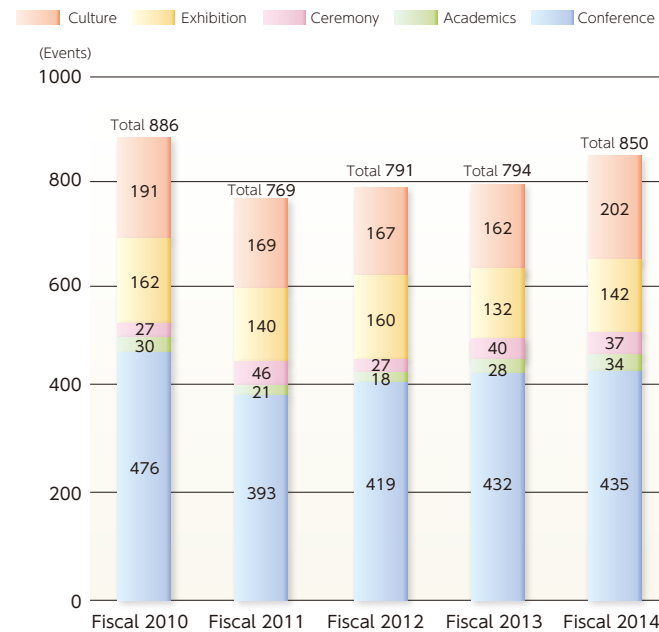
Operational Status of Tokyo International Forum Facilities

Facility occupancy rate

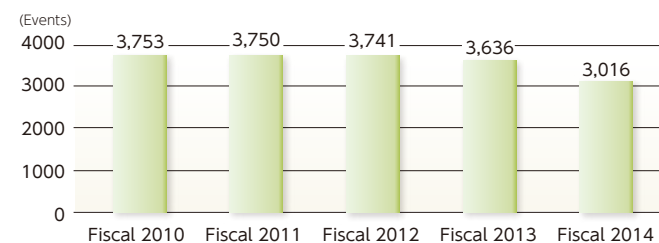


Notes: Six main facilities : Halls A, B7, B5, C, D7, and the Exhibition Hall Conference rooms in Glass Building : 31rooms
Calculation method for occupancy rate : number of days in use / (365 [or 366] - number of inspection days [24 per year]).
Days that facilities cannot be used due to large-scale repairs and maintenance are not counted.

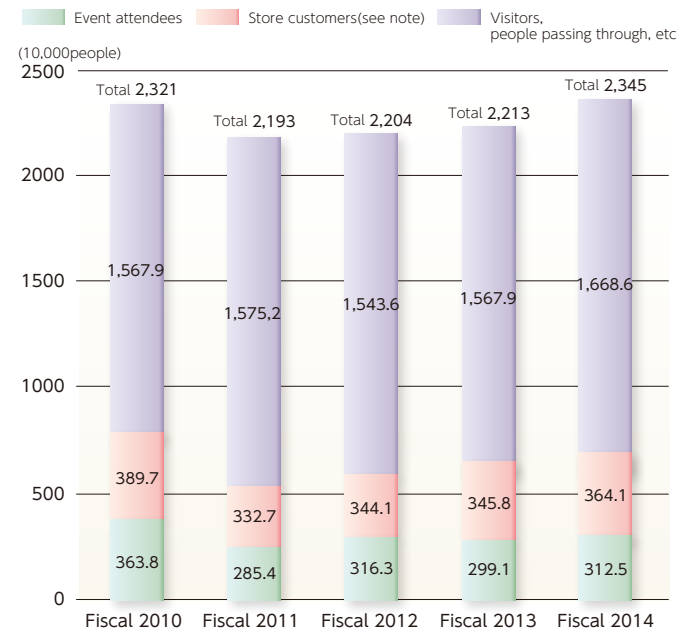
Number of events held at main facilities by type of event



Number of events held in conference rooms

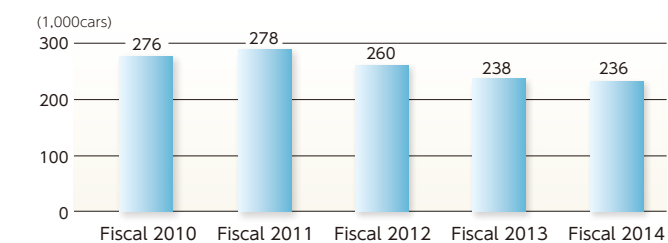


Total number of visitors (estimate)



Note : Store customers are counted by the number of receipts issued at cash registers of restaurants and cafes.

Number of parking spaces used



Major events held in fiscal 2014

Classification	Event name	Dates Held	Event Space
Conference	Fujitsu Forum 2014	15-16 May 2014	All Facilities (excluding A)
	Cable Convention 2014	29-30 July 2014	B7,B5,D5,CR
	Harvard Project for Asian and International Relations 2014 Tokyo	22-26 Aug. 2014	B7,CR
	Annual Conference of the International Bar Association 2014 Tokyo	19-24 Oct. 2014	All Facilities
	78th International Electrotechnical Commission General Meeting	4-15 Nov. 2014	B7,B5,C,D7,D5,D1,CR,LG,GL
	Revolution in Astronomy with ALMA - The Third Year	8-11 Dec. 2014	B7,B5
	Rakuten Conference 2015	15 Jan. 2015	All Facilities (excluding C)
	Nobel Prize Dialogue Tokyo	1 Mar. 2015	B7,B5,D5,GL
	World Congress 2015	13-15 Mar. 2015	B7,B5
Academics	World Ophthalmology Congress(WOC) 2014	2-6 Apr. 2014	All Facilities
	The 111th Annual Meeting of Internal Medicine	11-13 Apr. 2014	A,B7,B5,C,D7,D5,E
	66th Annual Congress of the Japan Society of Obstetrics and Gynecology	18-20 Apr. 2014	All Facilities
	The 100th General Meeting of the Japanese Society of Gastroenterology	23-26 Apr. 2014	All Facilities
	The 15th The Japanese Society for Dementia Care	31 May - 1 June 2014	A,B7,B5,C,E1,Plaza
	The 32nd Annual Meeting of the Academy of Clinical Dentistry	14-15 June 2014	B7,B5,C,D7,D5,E,LG
	65th General Assembly of The Japan Society for Oriental Medicine	27-29 June 2014	B7,B5,C,D7,D5,D1,LG
	Foursome 2014 Tokyo	4-6 July 2014	B7,B5,C,D7,D5
	The 44th Annual Meeting of the Japanese Society of Oral Implantology	12-14 Sept. 2014	All Facilities (excluding A)
Ceremony	50th Anniversary National Construction Safety and Health Convention	24-25 Sept. 2014	A,B7,B5,C,E1
	National Convention Commemorating 65th Anniversary of Parole System Introduction	1 Oct. 2014	C
	Ceremony Marking 90th Anniversary of Shibuya Kyoiku Gakuen' s Founding	11 Nov. 2014	A
	JSCE 100th Anniversary Commemorative Ceremony	21 Nov. 2014	C,D1
Exhibition	TDK Tech Forum 2014	21-23 May 2014	CR,E1
	Takase Bussan Food and Alcoholic Beverage General Proposal Exhibition	10-11 June 2014	E
	Human Capital 2014 Tokyo	16-18 July 2014	B7,E
	Cable Tech Show 2014	29-30 July 2014	E
	2014 "Good job Development" Fair	5-6 Aug. 2014	B7,B5,E,LG
	AIKATSUI LIVE ILLUSION	16-20 Aug. 2014	E,LG,Plaza
	ad:tech tokyo 2014	17-18 Sept. 2014	B7,B5,D7,E,LG
	Financial Information Technology 2014	9-10 Oct. 2014	E
	Hitachi Innovation Forum 2014	30-31 Oct. 2014	All Facilities (excluding C)
	C&C User Forum & iExpo2014	20-21 Nov. 2014	A,B7,B5,D7,E,LG
	Panasonic SUPER BOX 2014	26-28 Nov. 2014	B7,B5,D7,E
	Takarazuka Revue' s 100th Anniversary Exhibition: Yume, Kagayaki Tsuzukete	16-28 Dec. 2014	E2,LG
Culture	Art Fair Tokyo 2015	20-22 Mar. 2015	B5,D1,E
	blast	6-24 Aug. 2014	C
	13th TOKYO JAZZ FESTIVAL	6-7 Sept. 2014	A
	CHICAGO THE MUSICAL Takarazuka 100th Anniversary : OG Version	1-9 Nov. 10-19 Dec. 2014	C
	SARAH BRIGHTMAN in concert with Orchestra	1, 8 and 11-12 Dec.2014	A
	Hiromi Uehara The torio project ALIVE Japan Tour 2014	5-7 Dec. 2014	A
	92th ALL JAPAN KASOH GRAND-PRIX	28 Dec. 2014	B7
	Mikhailovsky Theatre Ballet	3-4 and 10-11 Jan. 2015	A
	Musical Ernest in Love	7-19 Jan. 2014	C
	The Super Soul Musical THE WIZ "The Wonderful Wizard of OZ"	7-22 Mar. 2015	C

A : Hall A, B7 : Hall B7, B5 : Hall B5, C : Hall C, D7 : Hall D7, D5 : Hall D5, D1 : Hall D1, E: Exhibition Hall (whole),E1: Exhibition Hall (1),E2: Exhibition Hall (2), CR: Conference Rooms, LG : Lobby Gallery, GL : Lounge, Plaza : Plaza

“Central City MICE” Activities

As one of the foremost convention and art centers in Japan, Tokyo International Forum plays a pivotal role in Japan and Tokyo by attracting and holding MICE.

Located in Tokyo's highly attractive Marunouchi district, Japan's business center and, in recent years, cultural and tourism area, Tokyo International Forum is adjacent to the commercial districts of Ginza and Yurakucho. The location also offers highly convenient transportation access, as Japan's rail travel hub terminal, Tokyo Station, is only a short distance away on the north side, and there is a direct link to Japan Railways (JR) and Tokyo Metro Yurakucho Station to the south. Also within walking distance are the outer garden of the Imperial Palace, the world-renowned Ginza shopping area and the Hibiya theater district. Quite simply, some of the best of what Tokyo has to offer has been condensed into this one area. There is a host of accommodation in the vicinity of Tokyo International Forum, ranging from international luxury hotels to reasonably priced business hotels.

While collaborating with the Tokyo Metropolitan Government

and the local area, Tokyo International Forum Co., Ltd. is involved in attracting and serving as a venue for MICE business events at an international scale, as the center of Central City MICE that provides a high-value-added MICE environment throughout the area. This is achieved by linking Tokyo International Forum's advanced functions as a convention facility with the area's overall functions, which have integrated wide-ranging facilities and functions, such as those accommodation and commercial facilities, tourism and business.

*MICE is an acronym for Meeting, Incentive travel, Convention, and Exhibition, a generic term for business and other events that involve the gathering of many people and the undertaking of business activities.

The following large-scale international conferences were held in Tokyo International Forum in Fiscal 2014.

Annual Conference of the International Bar Association 2014 Tokyo

The annual conference of the International Bar Association (IBA) was held in Tokyo, the first time in East Asia. The world's largest bar association, the IBA comprises more than 200 bar associations and more than 5,000 individual members. Arriving from all over the world, the number of participants exceeded 6,000, and more than 200 sessions covering a wide range of fields were held during the duration of the conference. As approximately 5,500 of the participants had come from overseas, this international conference had an extremely high proportion of non-Japanese delegates.

Timed to coincide with the duration of the conference, for which a high number of overseas delegates would be welcomed, the “Marunouchi Naka-dori Open Space Utilization Model Business 2014” was held in the Otemachi-Marunouchi-Yurakucho (OMY) Area. Undertaken as part of an initiative to maintain the local environment as the “Central City MICE” venue that stages international conferences throughout the area, the event created spaces—such as making Naka-dori into a pedestrian precinct with open-air sidewalk street cafés and the holding of lunchtime concerts—for relaxing cultural exchanges for visitors to the street, including conference delegates.



Open-air sidewalk café on Naka-dori



Banners on Naka-dori



Welcome party



Kendama (cup and ball) performance

- Dates held : October 19–24, 2014
- Event spaces : All Tokyo International Forum facilities
- Number of participants : approx. 6,000 (approx.150 countries)



Opening ceremony



Experiencing the tea ceremony

34th World Ophthalmology Congress (WOC) 2014

For the first time in 36 years, the WOC was held in Japan. Together with the Asia-Pacific Academy of Ophthalmology (APAO) and the Japanese Ophthalmological Society (JOS), the event brought together ophthalmologists and people involved in medicine from 135 countries.

By thinking to hold WOC2014 in the first week of April, the co-hosts had said they wanted to welcome participants from overseas during the most beautiful season of the year, when the cherry blossoms are in bloom. Surprise performances were also given, including the appearance of a huge cherry tree on Tokyo International Forum Plaza.



A decoration of the flags of all nations



- Dates held : April 2–6, 2014
- Event spaces : All Tokyo International Forum facilities, Imperial Hotel
- Number of participants : approx. 20,000 (135 countries)

78th International Electrotechnical Commission (IEC) General Meeting Tokyo

An international organization founded in 1906, the IEC aims to contribute to the development of industry, the promotion of international trade, and improvements in product and service convenience for users through international standardization and conformity assessment systems related to electrical and electronic technologies. A commission of experts is held at the annual IEC General Meeting to conduct a general assembly, meetings of organizational management and standards development.

Held for the first time in 15 years in Japan, this General Meeting in Tokyo was attended by approximately 2,400 people from 62 countries, held around 240 meetings covering 53 fields, and was the largest IEC General Meeting of recent years.



Robot demonstration at reception



- Dates held : November 4–15, 2014
- Event spaces : Tokyo International Forum B5, B7, C, D1, D5, D7, Lobby Gallery, all G Building conference rooms
- Number of participants : approx. 2,400 (62 countries)

Events Planned and Run by Tokyo International Forum

Taking advantage of its venues as spaces to create and disseminate culture, Tokyo International Forum carries out its own events that contribute to the local community and society as a whole as a part of its efforts to create a charming and dynamic community.

La Folle Journée au Japon “Days of Enthusiasm” Music Festival 2014

Tokyo International Forum began holding La Folle Journée, the epoch-making music festival that started in France, as La Folle Journée au Japon (LFJ) “Days of Enthusiasm” music festivals in Japan in 2005. Recording around 320,000 visitors in the first year, the event has since grown into the largest classical music festival in Japan and has become an established seasonal tradition of Golden Week in Tokyo.

The 2014 LFJ was memorable as the 10th time the event was held.



Based on the theme of the “A Day of 10th Anniversary Celebration,” the concept involved each of 10 composers who had previously graced the LFJ bringing along a friend and gathering at Tokyo International Forum, and the performing of several pieces to cover the currents in classical music from the 17th century to the 20th century.

ラ・フォル・ジュルネ
オ・ジャポン 2014

- Theme : A Day of 10th Anniversary Celebration/Jours de Fêtes
- Dates held : May 3-5, 2014 (Festival special event held on previous evening, May 2)
- Event venues : Tokyo International Forum, Yomiuri Hall, Yomiuri Otemachi Hall and Otemachi-Marunouchi-Yurakucho Area
- Number of visitors : approx. 612,000 (total)
- Number of performing artists : 2,261 (901 [573 from overseas, 328 from Japan] of whom people paid an admission fee)
- Number of performances : 366 (of which 147 were paid programs)
- Number of tickets sold : 151,001

Topics

1 10th LFJ Celebrated by All

The program was colorfully expanded to mark the 10th holding of the event. In keeping with large numbers of people who kindly support LFJ, we created spaces that were full of festival spirit.

[1] Festival special event held on previous evening (May 2)

①“Beethoven’s Ninth Symphony *Ode to Joy* Singalong” (Plaza)

Following an online call for support, around 1,300 people gathered for a one-night only participation program at which everyone present joined in to perform songs. The song *Ode to Joy* performed by all those present sounded magnificent in the Tokyo International Forum at night.



② “Enthusiasm Eve of LFJ” (Plaza)

On the Plaza kiosk stage, a musical came on to perform traditional Hungarian music with a rich and colorful tone. By allowing people to enjoy live music and a meal at Neo Stall Village, the venue became one in generating enthusiasm on the eve of the 10th holding of the LFJ.



[2] Tokyo Classics Night (Plaza, May 3)

A special live performance to mark the 10th anniversary was held at the Plaza on the first evening of the music festival. Unique in 24-hour city Tokyo, the festival and the excitement continued late into the night.



③Festival Days Eve of LFJ “American Nights” (Hall A)

Makoto Ozone (piano), Lucero Tena (castanets), Sinfonia Varsovia and Jean-Jacques Kantorow (conductor) gave an amazing performance that captivated the audience.



④Reception (Exhibition Hall)

The Tokyo International Forum invited supporting companies and people involved, such as sponsors and backers, around 700 of whom attended the reception.



[3] Special Additional “Festival Nights” Performance (Hall A, May 3)

The biggest surprise, given by friends connected by music. To celebrate the 10th anniversary, world-renowned artists, such as Martha Argerich (piano) and Gidon Kremer (violin), gathered to play together for one-night in front of a 5,000-strong audience, who were enraptured by the performance.



2 LFJ2014 Showed Greater Spread of Events

Aiming for a music festival that was more rooted in the local community, admission-based performances were held at a new venue, a program implemented in collaboration with the local community and the extent of the area concerts developed.

[1] Program in Collaboration with Chiyoda Ward

2014 marked the start of a wide-ranging program of events developed in collaboration with specialty shopping streets, elementary and junior high schools, cultural facilities and universities within Tokyo’s wards, including Tokyo’s Chiyoda Ward, which got involved in a special LFJ cooperative project.

① “Chiyoda Culture Information Spots” Set Up

Dedicated stands were set up inside LFJ2014 venues to showcase the wide-ranging attractions and tourist spots in Chiyoda Ward. These stands centered on the displays and sales of specialist stores on shopping streets for musical instruments (Ochanomizu area), old and new books (Jimbocho area) and electronics (Akihabara area).



②Cooperation with University Student Social Collaboration Activities

Students who are engaged in town revitalization participated as LFJ operations staff. Eight students were responsible for “LFJ Volunteer 2014” operations as volunteer leaders.



③Classical Music Lecture

A classical music lecture for beginners titled “Hibiya College prior to LFJ: if you take one more step forward, classical music will be more familiar to you” was held by Chiyoda City’s Hibiya Library & Museum. The lecture conveyed the attractions of classical music and ways to enjoy 2014. (April 16)

④Lunchtime concert

Also serving as PR ahead of LFJ2014, a lunchtime concert was held at the Chiyoda Ward Office. Matching the LFJ2014 concept, pieces by 10 composers were played on flute and piano. (April 17)

⑤Outreach activity

Under the Outreach initiatives, visits were made to two elementary schools in Chiyoda Ward, where Masato Suzuki (speaker, piano) held workshops. (April 17)



⑥Rehearsal Opened to Public

800 elementary school pupils and junior high school students from Tokyo’s Chiyoda and Chuo wards were invited to attend a rehearsal of Yokohama Sinfonietta (conducted by Masato Suzuki). (Hall C, May 2)



[2] Area Concerts Expanded

Six new venues joined the “LFJ Area Concerts,” which are held at the facilities of the corporate entities that are kindly sponsoring LFJ, making a total of 11. Combined with the nine “Marunouchi Area Concert” venues held by Mitsubishi Estate Co., Ltd., the scale of area concerts totaled 137 performances at 20 venues.



[3] Yomiuri Otemachi Hall

Opened in March 2014, the 501-seat Yomiuri Otemachi Hall newly joined admission-based venues. With “Musical Offerings” as their featured theme, 15 programs were held and centered on chamber music and choirs.



Marunouchi Kids’ Jamboree 2014

We want to provide children with the excitement, discoveries and surprises from which future dreams are made. Started from such aspirations as an event marking the 10th anniversary of the opening of Tokyo International Forum (TIF), the Marunouchi Kids’ Jamboree 2014 was a participatory “hands-on” event for children. Loved by many people as a Marunouchi summer feature, 2014 marked the eighth time the event had been held.

The event program comprised five categories: TIF Wonder Campus, Wakuwaku (Thrill) Booth, Wonder Stage, Wonder Club and Kids’ Town.

The 2014 theme for the original TIF Wonder Campus program was “Communicate.” The theme was approached from wide-ranging fields in six special classes, including biology, science, literature and art.

In Wonder Club and at the Wakuwaku Booth, there was a full program of a range of seminars and workshops given by corporations and organizations. In Kids’ Town, children could experience riding on heavy machinery, such as drilling machines, and firefighting water cannon. On the Wonder Stage, there were exciting music and dance performances and a “Fun Large Experiment Classroom” was held to convey the wonders of science.



In all, there were 152 different types of event held that, apart from these, included Catchball Classroom, Sumo Experience, Parade with Hand-made Musical Instruments, Papermaking Experience and a newspaper production workshop. Despite the high temperatures on successive days, they were three days in which Tokyo International Forum was full of the smiles and cheers of energetic children.



- Dates held : August 12-14, 2014
- Event spaces : All Tokyo International Forum facilities(excluding A,C)
- Number of visitors : approx. 125,000 (total)
- Number of planned items : 152
- Number of cooperating organizations/corporations : 121

TOKYO stylish NIGHT “REFLECTION 2014/2015”

Held as a year-end event, TOKYO stylish NIGHT “REFLECTION 2014/2015” made full use of music, light, dance and image. As they were performed with music and light with the Plaza as the stage, the show presented an installation that utilized Tokyo International Forum’s buildings and spaces for a cityscape that transformed over time. The four parts comprising the show started with Classic Night, continued with Dancing Night, in which up-and-coming dancers gave a spectacular dance performance that included DAZZLE, Lonely Night, a space of tranquil light and sound, and closed with Holy Night, for which visual planner Shutaro Oku created magnificent spaces using projection mapping video production techniques.



The word REFLECTION carries the visual meaning, including shadow, and the meaning that epitomizes human inwardness, such as introspection and meditation. The title encapsulates the intention of drawing on the Plaza venue’s characteristics to try to

produce a performance that resonates with visitors’ senses and inner beings.

This unprecedented and exciting initiative was able to paint Tokyo International Forum’s attractiveness in a new light.

- Dates held : December 19–28, 2014
- Event venue : Tokyo International Forum Plaza
- Number of visitors : approx. 30,000

“Site Memories Panel Exhibition” In days of old, this was the site of Tokyo City Hall

We displayed precious photos that recorded the passage of history of Tokyo Government Office Building which occupied the site on which Tokyo International Forum now stands until 1991. Since the time of Tokyo Government Office Building’s construction in 1894, the building stood as the government facilities responsible for Tokyo’s overall administration for close to a century. In the quarter century that has just elapsed since the subsequently move to the Tokyo Metropolitan Government building in Shinjuku, the numbers of people who retain memories of the relocation has been declining. We thus organized a panel exhibition so that people could see

photos of bygone eras while experiencing time-slip moments and also with a view to evoking thoughts about Tokyo’s future. Many people, including passersby, appeared interested as they looked at the photo panels.



- Dates held : March 17–30, 2015
- Event space : First floor, Tokyo International Forum Glass Building, space in front of Ota Dokan statue

Neo Stall Village Super Night in Tokyo Ajiwai Festa (Taste of Tokyo) 2014

Coinciding with the holding of the Tokyo Ajiwai Festa (Taste of Tokyo) 2014 (the first, organized by the Tokyo Metropolitan Government and the Tokyo Ajiwai Festa Executive Committee) in the Tokyo-Marunouchi areas from October 10–12, 2014, we positioned a “Satellite Venue” on Tokyo International Forum Plaza and held Neo Stall Village Super Night in Tokyo Ajiwai Festa 2014 as a cooperative project. On this occasion, the traditional Neo Stall Village Super Night was a special version, featuring a menu that utilized Japan-sourced

ingredients and food trucks selling, for example, Japanese rice wine and wine made only from grapes grown in Japan. A wide variety of artists, including vocal groups and flamenco dancers, performed live on stage.

A large number of customers came during the three days of the event, and thus Tokyo Ajiwai Festa 2014 reached a hugely successful conclusion.

- Dates held : October 10–12, 2014
- Event space : Tokyo International Forum Plaza
- Number of visitors : approx. 5,300



studying fashion gave a performance at Tokyo International Forum Plaza that drew visitors’ attention.

- Organizers : Tokyo Metropolitan Government, Tokyo International Forum, TOKYO FANTASHION Executive Committee
- Date held : December 23, 2014
- Event venues : Tokyo International Forum B7, Plaza
- Number of participating brands : 17 (fashion show); 19 (sales fair)
- Number of visitors : approx. 600



Joint Organization/ Cooperative Business

Tokyo International Forum actively collaborates on activities that contribute to the local community and society.

Tokyo Michiterasu 2014

An illumination project turned the light on “history, the future and hopes” from the Tokyo-Marunouchi areas, Tokyo Michiterasu choreographed a show about Tokyo Station and its environs with lights and illuminations. Tokyo International Forum held a display of art objets.

- Dates held : December 1–28, 2014

2015 Kobe Memorial January 17 Gathering of Lights

An event to mourn the victims of the 1995 Great Hanshin-Awaji Earthquake and put the lessons learned into disaster response procedures and disaster mitigation measures.

- Date held : January 17, 2015

LIGHTING OBJET 2014

Under the dual concept of “global environmental protection and a peaceful future for our children” and “the continuation of reconstruction assistance” (for the areas affected by the Great East Japan Earthquake of March 2011), light works by artists active on the global stage were displayed at four venues in the Marunouchi area. Tokyo International Forum displayed Take-akari (Bamboo Light) by four teams of artists.

- Dates held : December 11–25, 2014

Tohoku KOREKARA Conference 2015

An event to think about the Great East Japan Earthquake evacuees and support activities as well as to wish for post-earthquake reconstruction.

- Date held : March 10, 2015

Major facility renovations, other improvement and repair work

Fiscal 2014 was the sixth year of a 10-year repair and improvement plan that started in 2009 to repair and improve facilities and equipment at the Tokyo International Forum.

The purpose of this work is not only to restore the buildings to their original condition when they were completed, but also to improve their functionality in response to customer requests while enhancing safety and security and making them easier on the environment. Aside from large-scale repair work carried out under the 10-year plan, we undertake repair and refurbishment work designed to increase customer convenience and further raise safety and security.

We would like to present the major construction work carried out in fiscal 2014.

Preparatory work to repair Glass Building’s steel roof

From fiscal 2015, we will be repainting the parts of the Glass Building’s steel roof and carrying out repair and improvement work to return the roof to its condition at the time of Tokyo International Forum’s completion. The safety precautions associated with the repairs (gondola, installation of access aisles, erecting of a safety net) were put in place in fiscal 2014. With reliable safety precautions in place, the work will be undertaken sequentially. The plan calls for the Glass Building’s steel roof, duly returned to its glorious appearance at the time of Tokyo International Forum’s completion, to be unveiled in September 2016.



Work to repair JR Keiyo Line side stairs

We painted the steel parts, such as the handrails and frame, cleaned the stair components, and made repairs and improvements to return to the stairs to their condition at the time of Tokyo International Forum’s completion.



Work to enhance security between Block C and Block D

To enhance the security of the flow of movement inside the building, we replaced the door in between Block C and Block D and installed a security system.



Glass Building smoking facility

Tokyo International Forum has separate indoor smoking areas in all areas, but previously customers using the Glass Building conference rooms could access a facility for smokers on the first floor of Block B, facing the Plaza.

Previously, there had been concerns about such aspects as space and ducting, but we were able to install a smoking facility on the fifth floor of the Glass Building. We thus improved convenience for customers using the conference rooms and other facilities in the Glass Building.



Automatic door renovation in elevator hall on third underground floor

As a safety improvement measure, the automatic door in the elevator hall was changed to a glass door to improve visibility and a fence installed to prevent any entanglement when the elevator doors are opening or closing.



Work to renovate Exhibition Hall handrail

We inspected the condition of the pillar protection railings fitted around the pillars in the Exhibition Hall and repaired them so they had rounded corners. We can thus expect this move to result in the prevention of injury when people bump into the handrails.



Renovation of smoking facility on second floor of B Block

We renovated the smoking facilities for customers using Hall B5 and Hall B7. By installing a cabin-type smoke extractor in place of the previous open-type smoke extractor we worked to enhance the separate smoking areas.



Topics

Citation of appreciation from Marunouchi Police Station (May 2014)

To create an urban development that never tolerates terrorism, Tokyo International Forum actively conducts daily activities, such as terrorism prevention training as a member of the Marunouchi Partnership. For these activities, Tokyo International Forum was presented with a citation of appreciation from the chief of police at Metropolitan Police Department's Marunouchi police station. The award presentation ceremony took place at the Fourth Marunouchi Partnership Promotion Meeting, which was held on May 30, 2014. At the meeting, the person in charge of crisis management gave a presentation about the anti-terrorism measures in place at Tokyo International Forum, to which many attendees listened intently.



Named Fiscal 2014 Excellent Waste Manager in large-scale, business-use building category (July 2014)

Of the 306 large-scale, commercial use buildings that the Chiyoda Cleaning Office subjected to on-the-spot surveys, Tokyo International Forum was commended as a building that is making a significant contribution to the ward's aim of remaining "Resource Recycling City Chiyoda" through its active efforts to encourage a reduction in the amount of business waste and recycling. To summarize the main activities, there are the recycling areas located within business premises, the efforts to separate and recycle waste materials, and the encouragement of the use of reusable items, including the reuse of envelopes.



Crime and fire prevention and disaster preparedness training (throughout the year)

Since its opening, Tokyo International Forum has developed its business activities based on its recognition that "safety and security are the most important services." In conjunction with endeavoring to prevent accidents and the outbreak of any disasters on a routine basis, the Tokyo International Forum set up a Crisis Management Committee, offers guidance and puts into practice overall crime prevention and disaster preparedness management measures. A variety of employee training sessions are held throughout the year, and efforts stepped up on a daily basis to ensure customer safety through accurate responses when an emergency occurs.



Machinaka Sui-insen Installation (August 2104)

To allow people to experience the great taste of Tokyo tap water, Bureau of Waterworks Tokyo Metropolitan Government installed Machinaka Sui-insen (Town Drinking Water Spigots) on Tokyo International Forum Plaza. In the shape of objects like the Bureau of Waterworks mascot, Suiteki-kun, the spigots add decoration to the Plaza.



Participation in Chiyoda Ward Community Cycle Proving Test (October 2014)

To actively encourage the widespread sharing of bicycles, Tokyo International Forum is participating in the Community Cycle Proving Test put into effect by Chiyoda Ward. The Community Cycle Proving Test involves the installation of several cycle ports (places where bicycles can be loaned and returned) within Chiyoda Ward. At each cycle port, a proving test is being conducted of the network-type joint bicycle use service, which enables users to borrow bicycles from and return bicycles to any port. Tokyo International Forum has installed a cycle port on the Plaza and is participating in the proving test in collaboration with Chiyoda Ward.



- Planned duration of proving test : October 1, 2014 to March 31, 2017
- Number of possible bicycle parking slots : 10 (maximum)

Future Brightness Award (December 2014)

A collaborative event between Tokyo International Forum and local communities, the light design Future Brightness Award, which recognizes the work of students, was held as a part of the LIGHTING OBJET 2014 in the Otemachi-Marunouchi-Yurakucho (OMY) area. From the submissions that encapsulate the youthful energy and thoughts of students from art-related colleges and vocational schools, four exquisite works were displayed the Tokyo International Forum's light walls.

- Duration of exhibit : December 11, 2014 to January 9, 2015



Tokyo International Forum Future Brightness Award Grand Prix



Gold award-winning "Oh! SUSHI!"

Financial Statements

Balance Sheet

		As of March 31, 2015	
Account	Amount	Account	Amount
(Assets)		(Liabilities)	(Unit: Thousands of yen)
Current assets	4,799,812	Current liabilities	2,528,518
Cash and deposits	3,507,285	Accounts payable-trade	1,200,010
Accounts receivable-trade	380,060	Lease obligations	11,388
Securities	768,879	Accounts payable-other	280,547
Merchandise	142	Accrued expenses	5,443
Supplies	25,163	Income taxes payable	79,602
Advanced payments	2,245	Accrued business office taxes	56,526
Prepaid expenses	94,436	Consumption tax payable	43,265
Deferred tax assets	11,997	Advances received	804,899
Accounts receivable-other	9,826	Deposits received	8,317
Other, net	268	Provision for bonuses	38,516
Allowance for doubtful accounts	△ 494		
Fixed assets	2,534,988	Fixed liabilities	760,717
Property, plant and equipment	784,983	Lease obligations	750
Buildings	635,950	Provision for retirement benefits	236,865
Structures	26,278	Long-term guarantee deposited	523,102
Vehicles	222		
Furniture and Fixtures	114,295		
Lease assets	8,235		
Intangible fixed assets	43,492		
Software	41,587		
Telephone subscription right	1,905		
Investments and other assets, gross	1,706,512		
Investment securities	1,023,875		
Long-term deposits	600,000		
Deferred tax assets	82,566		
Other, net	70		
Total Assets	7,334,801		

Note: All amounts less than 1,000 yen rounded down.

Statement of Income

		From April 1, 2014 to March 31, 2015
Account	Amount	(Unit: Thousands of yen)
Net sales		7,732,816
Cost of sales		6,037,935
Gross income		1,694,880
Selling, general and administrative expenses		1,383,189
Operating income		311,690
Non-operating income		
Interest income	6,256	
Reversal of allowance for doubtful receivables	9,816	
Miscellaneous income	23,519	39,592
Non-operating expenses		
Interest expenses	220	
Miscellaneous loss	172	392
Ordinary income		350,890
Extraordinary loss		
Loss on disposal of noncurrent assets		1,618
Income before income taxes		349,271
Income taxes-current	128,095	
Income taxes-deferred	19,222	147,318
Net income		201,953

Note: All amounts less than 1,000 yen rounded down.

History of Tokyo International Forum

From basic concept to opening day

December 3, 1980	Declaration of construction of city hall by My Town Concept Panel Community Section Meeting
August 22, 1985	Announcement of fundamental concept of construction plan for the Tokyo City Hall
January 24, 1986	Inauguration of the Council of Tokyo Metropolitan Government for constructing Tokyo International Forum (final report on December 24, 1987)
November 2, 1989	Results of the international design competition announced with Rafael Viñoly as the winning architect
October 9, 1992	Construction starts
September 1, 1994	Establishment of Tokyo International Foundation
December 1, 1994	Opening of facility reservations for Tokyo International Forum
May 31, 1996	Construction finishes for Tokyo International Forum
July 1, 1996	Tokyo Metropolitan Government lends Tokyo International Forum to Tokyo International Foundation
January 10, 1997	Grand opening of Tokyo International Forum

Transition from Tokyo International Foundation to Tokyo International Forum Co., Ltd.

January 10 to March 29, 1997	"Tokyo Tokimeki Fiesta" held to celebrate opening of Tokyo International Forum
March 1, 1997	General opening of halls and conference rooms
December 24, 2000 – January 1, 2001	"Forum Millenario Club" year-end event held (held annually until 2005)
December 21, 2001	Announcement of a change in status from a foundation to stock corporation
August 2002	Commemorations of 5th anniversary of Tokyo International Forum ("Tokyo Art Jungle" etc.)
April 4, 2003	Establishment of Tokyo International Forum Co., Ltd. (Representative Director Hirohito Miyake)
May 22, 2003	Iwao Toriumi appointed as President & CEO
July 1, 2003	Tokyo International Foundation transfers business to Tokyo International Forum Co., Ltd.

Tokyo International Forum Co., Ltd.

July 1, 2003	Tokyo International Forum Co., Ltd. begins operations Signs changed on the premises, names of some Halls and other facilities are changed, operating hours extended (7:00-23:30), new facility use fee system introduced
July 2003	Neo Stall Village comes to Plaza (every weekday thereafter)
October 2003	Oedo Antique Market comes to Plaza (once a month until September 2005, twice a month from October 2005)
November 1, 2003	Mitsuo Aida Museum opens
June 2004	Installed lighting poles to illuminate the Plaza
July 2004	The Neo Stall Village Super Night was first held. (held each year between April and November since then)
April 24 – May 1, 2005	La Folle Journée au Japon "Days of Enthusiasm" music festival 2005 held (during Golden Week every year)
April 2006	Expanded women's restroom in Hall A, installed elevator for Exhibition Hall, installed escalator near exit to Tokyo Station, Plaza turned into a non-smoking area
December 8, 2006 – January 15, 2007 (all year)	Year-end event "Harmonia" held (also in 2007 and 2008) Celebrations held to commemorate 10th anniversary ("Marunouchi Kids Fiesta" etc. in August), "Marunouchi Kids Fiesta" continues to be held in August of every year
June 1, 2007	Conference room G701 (completed in April) now available for reservations
March 2008	Smoking room installed in Exhibition Hall lobby
August 2008	Tokyo International Forum Environmental Policy decided
From April 2009	First year of large-scale renovation work based on 10-year Medium-Term Renovation and Improvement Plan
December 2009	Year-end event "Marché de Noël de Strasbourg" held(Also held in 2010)
December 2009	Greenery added to roof and terrace on the seventh floor of the Glass Building
From April 2010	Second phase of large-scale renovation work based on 10-year Medium-Term Renovation and Improvement Plan (Includes partial renovation of Hall A, renovation of Hall D1, replacement of air-conditioning in the Glass Building conference rooms, replacement of electric room air-conditioning)
March 11, 2011	Great East Japan Earthquake strikes. Tokyo International Forum accepts stranded commuters
March 31, 2011	Renovated Hall D1 opens (changed from a theater with fixed seating to an open floor plan)
From April 2011	Third phase of large-scale renovation work based on 10-year Medium-Term Renovation and Improvement Plan (Includes replacement of Plaza's trees and plants, partial renovations of Exhibition Hall and halls D5 and D7, repair and improvement of part of outer wall, repair and improvement of wood rib wall/bridge; installation of new smoking rooms (halls A/C), reservation counter and meeting corner renovation)
Throughout 2012	Events marking 15th anniversary of opening held (including Michael Sandel special lectures in May, Marunouchi Kids' Jamboree in August)
From April 2012	Fourth phase of large-scale renovation work based on 10-year Medium-Term Renovation and Improvement Plan (Includes partial renovations of halls B5/B7/C, Plaza stone floor repairs)
May 2012	Nursing room opens
From April 2013	Fifth phase of large-scale renovation work based on 10-year Medium-Term Renovation and Improvement Plan (Includes complete renovation of central kitchens, partial renovation of Hall A, replacement of Plaza's trees and plants, repair and improvement of part of outer wall)
From April 2014	Sixth phase of large-scale renovation work based on 10-year Medium-Term Renovation and Improvement Plan (Includes repairs to Keiyo Line side stairs, preparatory work to repair the Glass Building's steel roof, installation of the Glass Building's smoking facility)
December 2014	Year-end TOKYO stylish NIGHT "REFLECTION 2014/2015" event held

Overview of Facilities

As of July 1, 2015

Name	Tokyo International Forum	
Address	5-1 Marunouchi 3-chome, Chiyoda-ku, Tokyo	
Site area	approximately 27,000 m²	
Total floor area	approximately 145,000m²	
Opening date	January 10, 1997	
Owner	Tokyo Metropolitan Government	
Administrating Organization	Tokyo International Forum Co., Ltd.	
Architect	Rafael Viñoly (U.S.A.), winner of the international design competition	
Halls, etc.	Hall A	Raked auditorium / seating capacity: 5,012 seats (3,025 on the first level, 1,987 on the second level)
	Hall B7	Flat floor / area: 1,400 m² (dividable into two sections 670 m² each)
	Hall B5	Flat floor / area: 600 m² (dividable into two sections 280 m² and 300 m²)
	Hall C	Raked auditorium / seating capacity: 1,502 seats (739 on the first level, 363 on the second level, 400 on the third level)
	Hall D7	Flat floor / area: 340 m² (retractable seating for 100 seats and 180 seats)
	Hall D5	Flat floor / area: 285 m²
	Hall D1	Flat floor / area: 137 m²
	Exhibition Hall	Area: 5,000 m² (dividable into two sections 3,000 m² and 2,000 m²)
	Conference rooms	D Block:Three conference rooms on floors 4 and 5, Glass Building:31 conference rooms on floors 4 through 7 (10 each on floors 4 through 6, one on floor 7)
	Other	Lobby Gallery:560 m², Lounge:224 m²
Glass Building	Scale	Area: approximately 4,000 m² (length: about 210m, maximum width: about 30m, height: about 60m)
	Pieces of glass	about 3,600 (1,800 on the west side, 1,000 on the roof, 800 on the east side)
	Dimensions of the glass	2.6m x 2.5m on the walls, 1.7m x 1.9m on the roof
Plaza	Scale	Area: approximately 9,700 m²
	Plants, etc.	Plants: 42 Japanese zelkova trees, 15 katsura trees, 48 two-seater benches
		Rental spaces : A / about 880 m², B / about 670 m², C / about 380 m², D / about 160 m²
Parking	Hours, etc.	Third underground floor / 7:00 – 23:30 (all year)
	Parking spaces	420 (including 7 handicap parking spaces)
	Fee	¥200 / 30 minutes
Stores, etc.	Cafes & restaurants	12 locations (six on the first underground floor, four on the first floor, one on the second floor, one on the seventh floor)
	Shops	2 locations (art shop, convenience store)
	Services	3 locations (travel agency, ticket center, relaxation area)
		Mitsuo Aida Museum / first underground floor, Miraculeuse (wedding) / first floor
Artwork	134 exhibits by 50 artists in total, including "Red and Black" by Ellsworth Kelly	



Hall A



Hall B7



Hall C



Exhibition hall