



TOKYO INTERNATIONAL FORUM
東京国際フォーラム

3-5-1 Marunouchi, Chiyoda-ku,
Tokyo 100-0005, Japan
Tel. +81-3-5221-9000 (Main)

<http://www.t-i-forum.co.jp/en/>

ANNUAL REPORT 2015

TOKYO INTERNATIONAL FORUM



President & CEO
Kiyofumi Kamijo

President's Message

Tokyo International Forum Co., Ltd. was established in April 2003 as the company to manage and operate the Tokyo Metropolitan Government-owned Tokyo International Forum. Used by many people, including more than 23 million visitors annually, Tokyo International Forum has grown into a central city meeting, incentive travel, conference, and event (MICE) facility and is held in high regard both in Japan and overseas. I would like to take this opportunity to extend my heartfelt gratitude to all our customers and to everyone involved for their gracious support and assistance.

In fiscal 2015, I apologized to customers for the inconvenience caused by the large-scale repair work being undertaken in cooperation with the Tokyo Metropolitan Government, which meant that the Exhibition Hall (renamed Hall E from April 2016) was not available for use for an extended period of time. Nevertheless, a wide variety of events were held, including academic conferences such as the 9th UIC World Congress on High Speed Rail, corporate conventions, and ceremonies as well as concerts and musicals. We proactively developed Tokyo International Forum's own planning event operations while thoroughly engaging in collaboration with local communities and the organizations involved. Our own events included La Folle Journée au Japon "Days of Enthusiasm" music festival that has become a Golden Week tradition and the Marunouchi Kids' Jamboree that is a participatory "hands-on" event for children and families. Various events jointly organized with the Tokyo Metropolitan Government—Tokyo Ajiwai Festa (Taste of Tokyo), which spreads the word about Tokyo ingredients and cooking at home and abroad, and TOKYO FANTASHION—featured enhanced content. In addition to simultaneously arranging digital signage at seven locations inside buildings, the information signs there were revamped to make them easier to understand and our functions as a MICE facility enhanced.

Tokyo International Forum will be marking the 20th anniversary of its opening in January 2017. Without stopping as we advance toward another 20 years, we have to fulfill our function as a world-leading MICE facility located in central Tokyo. In four years' time, the Tokyo 2020 Olympic and Paralympic Games will be held. In addition to weightlifting, Tokyo International Forum was approved as the venue for the powerlifting competition at a meeting of the governing board of the International Paralympic Committee (IPC). With the success of both the Olympic and Paralympic Games a matter of the utmost importance, it is also important that we convey to the world Tokyo International Forum's attractiveness as a bustling cultural base, for example by building momentum and promoting cultural programs.

From now on, we will steadily implement our Fifth Medium-Term Management Plan, which serves as a compass in fulfilling our management philosophy of being a "company that creates sensations," and will press ahead with our contributions to local communities and the people of Tokyo by improving customer services and through our own planning event operations. We will also strive to ensure thorough safety and security from the position of managing and operating a large-scale facility for attracting customers.

In grateful anticipation of your continued patronage and support for our business endeavors.

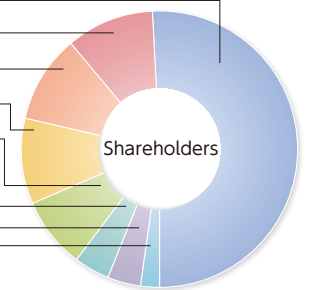
Company Profile

(as of July 1, 2016)

Name of Company : Tokyo International Forum Co., Ltd.
Address : 5-1 Marunouchi 3-chome, Chiyoda-ku, Tokyo
Date established : April 4, 2003
Main business : 1. Management of halls, conference rooms and other facilities of Tokyo International Forum
2. Management of the service facilities of Tokyo International Forum
3. Planning, design, execution and contracting of events for promoting international exchanges
4. Other business services related to the above
President & CEO : Kiyofumi Kamijo
Capital : 490 million yen

Share Information

1. Number of authorized shares	9,800 shares	4. Shareholders	
2. Number of issued shares	9,800 shares	Tokyo Metropolitan Government	5,000shares 51.0%
3. Number of shareholders	8	East Japan Railway Company	1,000shares 10.2%
		Mitsubishi Estate Co., Ltd.	1,000shares 10.2%
		Suntory Holdings Limited	1,000shares 10.2%
		Dentsu Inc.	800shares 8.2%
		Tokyo Electric Power Company Holdings, Inc.	400shares 4.1%
		Nippon Telegraph and Telephone East Corp.	400shares 4.1%
		Tokyo Gas Co., Ltd.	200shares 2.0%



Management Philosophy

As a leading convention and art center, Tokyo International Forum is a company that aims to create sensations and generate excitement by putting on display for the world the allure of the local community, Tokyo and Japan as a whole.

Management Principles

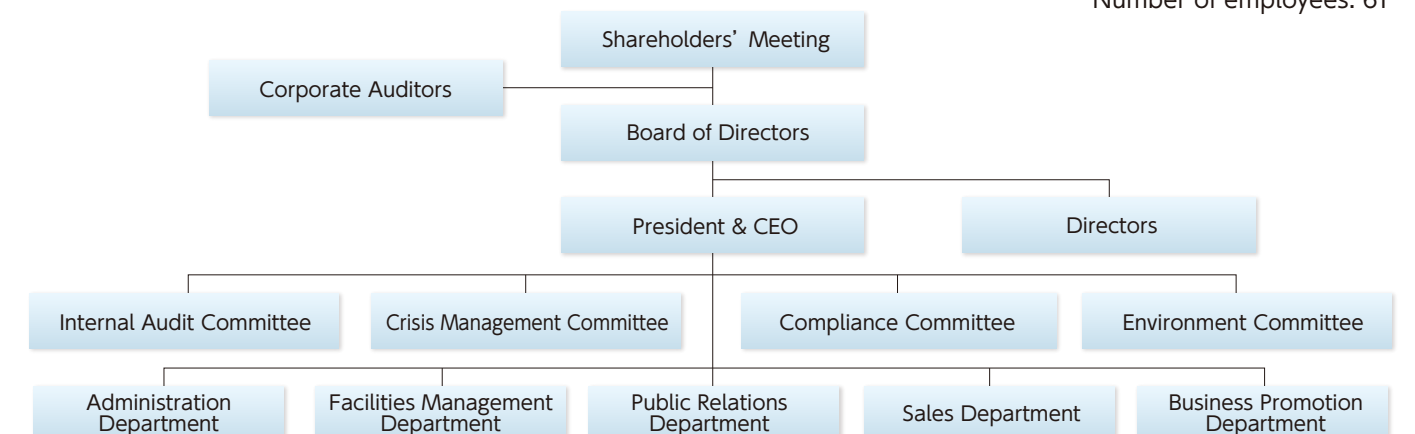
- Tokyo International Forum is a leading convention and art center that provides venues and services of the highest quality.
- Tokyo International Forum aims to be the one and only brand as a convention and art center that conveys the "now" of Tokyo and Japan.
- Tokyo International Forum contributes to the local community with a competitive and cooperative spirit, by focusing on building captivating communities in the Otemachi, Marunouchi and Yurakucho areas, the "face" of Tokyo.
- Tokyo International Forum is a venue for the dissemination of information, a symbol of the allure of Tokyo, the hustle and bustle of a town, and the passion of people.
- Tokyo International Forum delights in the happiness and satisfaction of its customers, and strives to be highly sensitive and responsive to the feelings of its customers.
- Tokyo International Forum aims to create high value added in its operations through highly transparent, efficient and highly profitable business management.

Management

President & CEO Kiyofumi Kamijo Managing Director Tetsuhiro Saikai Director Tomonori Uegaki
Corporate Auditor Yosuke Matsumiya Corporate Auditor Naoya Wako

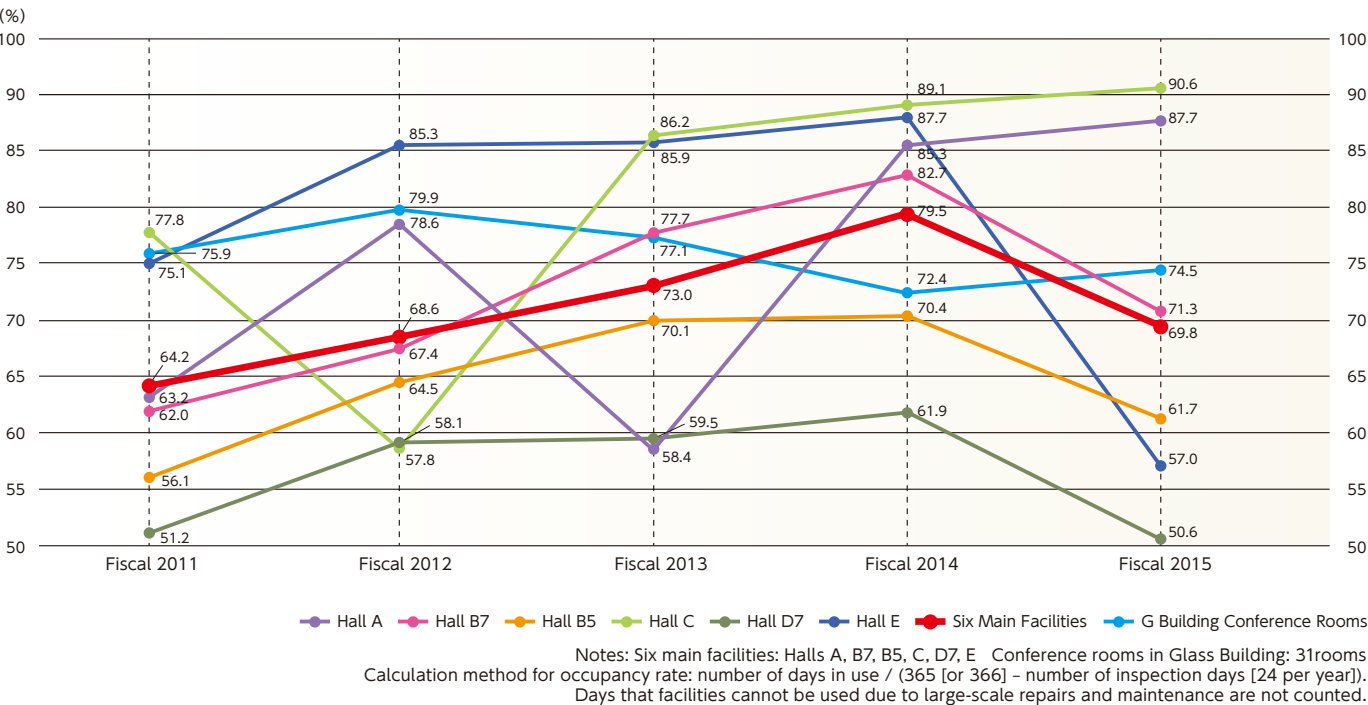
Organization Chart

Number of employees: 61

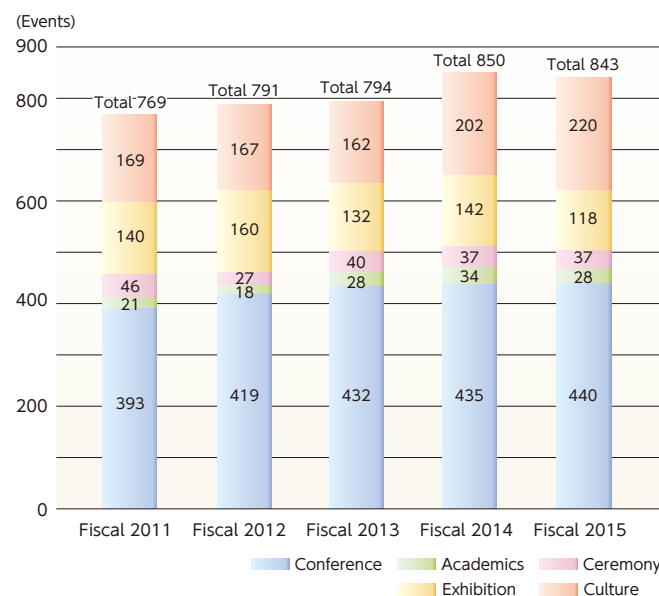


Operational Status of Tokyo International Forum Facilities

Facility occupancy rate



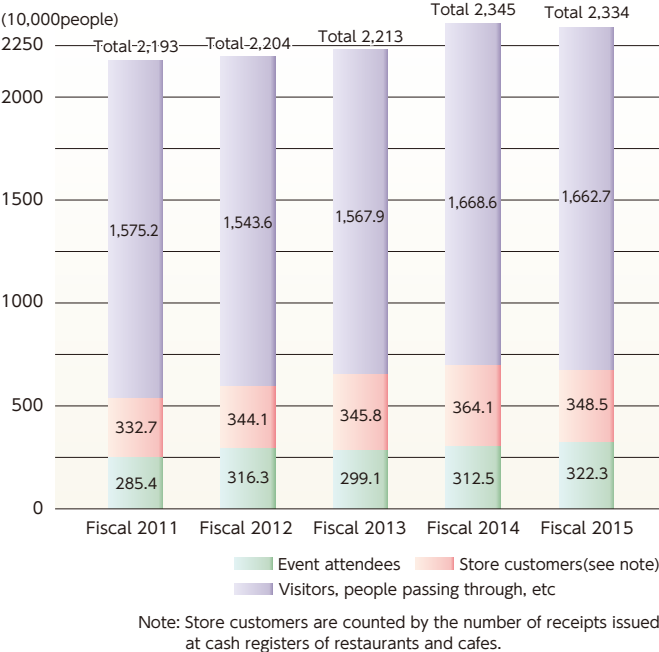
Number of events held at main facilities by type of event



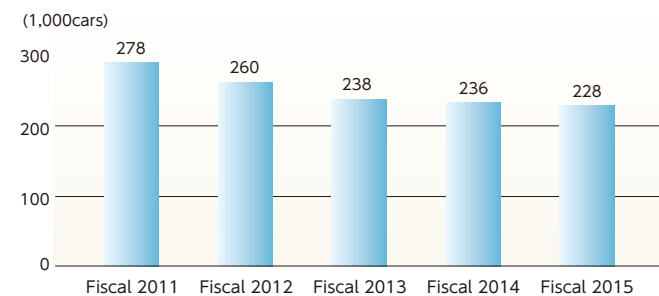
Number of events held in conference rooms



Total number of visitors (estimate)



Number of parking spaces used



Major events held in fiscal 2015

Classification	Event name	Dates Held	Event Space
Conference	Fujitsu Forum 2015	12-15 May 2015	All Facilities (excluding A)
	Cable Convention 2015	10-11 June 2015	B5,D7,D5,CR
Academics	The 55th Annual Meeting of the Japanese Respiratory Society	17-19 Apr. 2015	All Facilities (excluding A)
	The 116th Annual Meeting of ORL Society of Japan	20-23 May 2015	B7,B5,C,D7,E,LG,CR
	The 50th Anniversary Congress of Japanese Physical Therapy Association	5-7 June 2015	All Facilities
	The 30th Annual Meeting of the Japanese Society of Cataract and Refractive Surgery	19-21 June 2015	B7,B5,C,E,CR
	The 33rd Annual Meeting of the Academy of Clinical Dentistry	27-28 June 2015	All Facilities (excluding A)
	The 23rd Annual Meeting of the Japanese Breast Cancer Society	2-4 July 2015	All Facilities (excluding A)
	The 43rd Annual Meeting of the Japanese Association for Acute Medicine	21-23 Oct. 2015	All Facilities (excluding A)
	The 56th Japanese Orthoptic Congress	7-8 Nov. 2015	A
	The 25th JES Clinical Update on Endocrinology & Metabolism	27-28 Nov. 2015	B7,B5,C,CR
	The 54th Annual Meeting of the Japanese Retina and Vitreous Society held in conjunction with The 32nd Annual Meeting of the Japanese Society for Ocular Circulation	4-6 Dec. 2015	B7,B5,C,CR
Ceremony	Advances in Diabetology, the 50th Annual Postgraduate Course	19-20 Feb. 2016	All Facilities (excluding A)
	2015 JAPAN PRIZE PRESENTATION CEREMONY	23 Apr. 2015	C
	Toppan Forms Group 50th Anniversary Commemorative Ceremony	29 May 2015	B7
	Prudential Spirit of Community The 19th Volunteer Sprit Award National Award Presentation Ceremony & Forum	23 Dec. 2015	B7
	20th Japan Center for Regional Development Furusato Event Major Awards Ceremony / 2015 Community Creation Forum	2 Mar. 2016	B5
Exhibition	Cable Tech Show 2015	10-11 June 2015	E
	Human Capital 2015 / Learning Technology 2015	15-17 July 2015	E,CR
	2015 "Good job Development" Fair	8-9 Sept. 2015	E,LG,CR
	Challenge Sports TOKYO	20 Sept. 2015	E
	Financial Information Technology 2015	15-16 Oct. 2015	E,CR
	Hitachi SOCIAL INNOVATION FORUM 2015 -Tokyo-	29-30 Oct. 2015	A,B7,B5,E,LG,CR
	Canon EXPO 2015 Tokyo	4-6 Nov. 2015	All Facilities
	C&C User Forum & iExpo 2015	12-13 Nov. 2015	A,B7,B5,E,LG,CR
	Panasonic SUPER BOX 2015	17-20 Nov. 2015	B5,D7,D5,E,CR
	ad:tech tokyo 2015	1-2 Dec. 2015	B7,B5,E,LG,CR
Culture	BROADWAY DANCE CENTER 30th Anniversary Commemorative SHOWCASE "GET DIVERSE"	29-30 May 2015	C
	Premier Stage: Songs from 70 Years of Japanese Postwar History Commemorative Concert by Hiroshi Itsuki	3 June 2015	A
	Aoyama Mainland Fantasy Special: Broadway Musical Peter Pan	20-30 July 2015	C
	Musical "The Goodbye Girl"	7-23 Aug. 2015	C
	Takashi Matsumoto: Kazemachi Legend 2015 official project to commemorate 45 years as a lyricist	21-22 Aug. 2015	A
	14th TOKYO JAZZ FESTIVAL	5-6 Sept. 2015	A
	Umeda Arts Theater 10th Anniversary "SUPER GIFT! from Takarazuka Stars"	12-27 Sept. 2015	C
	Let It Be	18-22 Nov. 2015	C
	Takarazuka Revue Star Troupe "LOVE & DREAM"	6-17 Jan. 2016	C
	SHIONOGI MUSIC FAIR 2,600th Commemorative Concert	19 Feb. 2016	A
	Musical "Jekyll & Hyde"	5-20 Mar. 2016	C

A: Hall A, B7: Hall B7, B5: Hall B5, C: Hall C, D7: Hall D7, D5: Hall D5, D1: Hall D1, E: Hall E, CR: Conference Rooms, LG: Lobby Gallery, GL: Lounge, Plaza: Plaza

Events Planned and Run by Tokyo International Forum

Taking advantage of its venues as spaces to create and disseminate culture, Tokyo International Forum carries out its own events that contribute to the local community and society as a whole as a part of its efforts to create a charming and dynamic community.

■ La Folle Journée au Japon “Days of Enthusiasm” Music Festival 2015



Tokyo International Forum began holding La Folle Journée, the epoch-making music festival that started in France, as La Folle Journée au Japon (LFJ) “Days of Enthusiasm” music festivals in Japan in 2005. Recording around 320,000 visitors in the first year, the event has since grown into the largest classical music festival in Japan and has become an established seasonal tradition of Golden Week in Tokyo.

The 11th LFJ in 2015 marked an evolution toward a more exciting music festival by making major changes to the theme settings and a diversified program. The newly opened theme in 2015 was PASSION: Music for Love, Prayer, and Life.

Passion can be defined as strong emotions that flow from the depths of the soul. Throughout music’s long history, from the

time of the Renaissance up to the present day, composers have wondered how they could set to music the things we are unable to express in words, including the life, soul, and feelings of human existence. A universal sensibility that pervades human culture, what we call passion has fueled that extensive music world and developed from the following three angles.

Passion for Prayer: Pieces that express prayers with music, in the same way as the Passions have from the Baroque period to the present day

Passion for Love: Pieces of music about love, from the Renaissance leading to the Romantics and the 20th century

Passion for Life: Pieces of music born from the delight of the soul, enlivened passions, overflowing sentiment

Theme : PASSION: Music for Love, Prayer, and Life

Dates held : May 2-4, 2015

(Festival special event held on previous evening, May 1)

Event venues : All Tokyo International Forum facilities, Yomiuri Hall, and Otemachi-Marunouchi-Yurakucho Area

Number of visitors : approx. 427,000 (total)

Number of performing artists : 2,344 (989 [518 from overseas and 471 from Japan] of whom paid an admission fee)

Number of performances : 395 (of which 135 were admission-based performances)

Number of tickets sold : 122,375

Topics

1. Redesigning the Theme Settings of the Reincarnated La Folle Journée

Previously, LFJ had been held in themes in line with the context of classical music, such as by composer, period or region, but from 2015 it was decided to redesign the themes to be universal concepts and keywords that pervade human culture. Doing so enabled the showcasing of a variety of works that transcend specific composers or periods and, more than ever before, made possible discoveries and a musical adventure that was full of surprises. The initial such theme, that for 2015 was PASSIONS.



2. Catering for the Young Generation

LFJ implemented a range of initiatives geared toward the young generation who will support the music scenes of the future.

① Discount for under-25s

Targeting those aged 25 or under, all performance tickets that remained unsold on the day of a performance were sold at half price. LFJ offered performances that could be enjoyed at low prices and furthermore at affordable prices and boosted the live classical music experience of the young generation.

② Children’s Music Atelier

Eagerly awaited every year, the free Kids’ Program for children was this year replaced by a Children’s Music Atelier. The artists who appeared in the free performances enriched the content by, for example, having prepared a special program for children.



③ Concert to “Feel Music through Your Eyes, Ears, and Body”

The content had undergone further evolution to permit even young children to enjoy a 45-minute performance by, for example, having performers and dancers appear and move their bodies together with the venue audience.



Outreach Activities

④ La Folle Journée Goes to School

Visiting two elementary schools Tokyo’s Chiyoda Ward, selected members from Bach Collegium Japan held workshops. (April 13)



⑤ Rehearsal Opened to Public

Approximately 580 elementary school pupils and junior high school students from Tokyo’s Chiyoda and Chuo wards attended a rehearsal of Sinfonia Varsovia (conducted by Robert Trevino). (Hall A, May 2)



⑥ Masterclass

A music lesson open to the public, the masterclass provided young performers with direct music guidance from artists who were appearing in admission-based performances. This popular program allowed a glimpse into the passion the artists have for works of music and into their personalities.



3. Everybody Joined in to Perform Hallelujah Chorus

Everybody Join In is a one-night only, participation program at which all those present perform one particular well-known song or piece of music to celebrate the raising of the curtain on another LFJ. For the 2015 version of this event, which dates back to 2013, everybody joined in to perform the Hallelujah Chorus. Marking an increase on the previous year, approximately 1,500 general lovers of music gathered to sing and perform the Hallelujah Chorus to celebrate the opening of the music festival.



4. Strengthening Cooperation with Local Communities

In aiming for a music festival that was rooted in the local community, a collaborative program with Chiyoda Ward was carried out and area concerts were performed this year.



① LFJ 2015 Pre-concerts

Also serving as public relations ahead of the LFJ festival, concerts were held at the venue for the Chiyoda Ward Cherry Blossom Festival and at the Chiyoda Ward Office. (March 28, April 14)



② Classical Music Lectures

Classical music lectures for beginners, entitled “Hibiya College prior to LFJ 2015: Opening doors to the wide world of classical music,” were organized by Chiyoda Ward’s Hibiya Library & Museum. (March 31, April 7)

③ “Chiyoda Cultural Information Spots 2015”

Information points for music-related content—such as musical instruments, sheet music, books and audio—town events, and tourist spots were set up inside LFJ 2015 venues to showcase the wide-ranging attractions of Chiyoda Ward. Taking place regularly on the LFJ Talk Stage was Chiyoda Ward Culture Talk, which featured among others the Chiyoda Ward mayor and the musician Ryudo Uzaki.



④ Area Concerts

Area concerts took place at a total of 20 venues; the 10 “LFJ Area Concerts” held at the facility venues of the corporations and organizations that are kindly supporting LFJ; and the 10 “Marunouchi-Area Concerts” held by Mitsubishi Estate Co., Ltd. The downtown area was full of music.



■ Marunouchi Kids’ Jamboree 2015 (Selection Held)

We want to provide children with the excitement, discoveries, and surprises from which future dreams are made. The Marunouchi Kids’ Jamboree started from such aspirations as a participatory “hands-on” event for children to mark the 10th anniversary of the opening of Tokyo International Forum (TIF) in 2007. As the Exhibition Hall is undergoing renovation work, the 9th Marunouchi Kids’ Jamboree in 2015 was held in a section somewhat reduced in size, but inside the venue the event built on the unsurpassed enthusiasm of a typical year, and many people came to visit.

The program of events held composed of categories, including



Dates held : August 12-14, 2015

Event venues : Halls D1 and D5, Glass Building conference rooms, Lobby Gallery, Plaza, other

Number of visitors : approx. 94,000 (total)

Number of planned items : 101

Number of programs implemented : 369 (total)

Number of cooperating organizations/corporations : 79

Events Jointly Organized with Tokyo Metropolitan Government

TOKYO FANTASHION

In addition to actively raising the profile of Tokyo’s eminent fashion brands and sending out the Cool Japan message that originated in Tokyo, Tokyo International Forum held the TOKYO FANTASHION fashion events in August and March for consumers through CREATORS TOKYO with the aim of nurturing and supporting young fashion designers. In August, the huge open space at the Glass Building was utilized for fashion installations, displays and a sales fair. In March, the light floor on the first floor of Block D was effectively utilized for a fashion show, while displays and a sales fair took place at Hall D1. Full of the latest fashion collections that would be departing Tokyo and heading for places the world over, the venues were wrapped in youthful enthusiasm.

Organizers : Tokyo Metropolitan Government, Tokyo International Forum, TOKYO FANTASHION Executive Committee
Dates held : August 16, 2015 ; March 20, 2016
Event venues: **August :** Glass Building Lobby Gallery, G Building conference rooms
March : Hall D1 Lobby, Hall D1
Number of participating brands : August : 19 ; March : 11
Number of visitors (total) : August : approx. 1,400 ; March : approx. 600



Tokyo Ajiwai Festa (Taste of Tokyo)

Held for the first time in 2014, the Tokyo Ajiwai Festa (Taste of Tokyo) event spreads the word about Tokyo’s diverse attractions, including cooking that makes use of agricultural, forestry and fishery products sourced from the city and traditional culture that has been passed down through the ages. For 2015, a scaled-up event added to the “Marunouchi Area,” “Yurakucho Area” and “Hibiya Area” that had featured in the previous year. At Tokyo International Forum, which served as the Yurakucho Area venue, six zones were set up in the Plaza under the name “Variety of Nippon” where people could feel a connection with each region of Japan and other countries in the world. A flood of visitors came to the venue, attracted by content that enabled them to enjoy a variety of tastes. The event’s “ingredients” included displays of produce from all over Japan, stalls where visitors could enjoy cooking and alcoholic beverages from other countries, a showcase of low-price but tasty “B-class gourmet” food from Tokyo’s Tama region, and a special stage where up-and-coming DJs put in appearances.

Dates held : October 9-11, 2015 **Organizers :** Tokyo Metropolitan Government, Tokyo Ajiwai Festa Executive Committee (Tokyo International Forum Co., Ltd. took part in the planning and operation as a committee member)
Number of visitors (total) : approx. 75,000 (total for Marunouchi, Yurakucho, and Hibiya areas)



Event to Prevent Memories of Great East Japan Earthquake from Fading
Let’s Send Good Spirits from Tokyo! Reconstruction Support 2016

With the aim of preventing memories of the natural disaster from fading as the fifth anniversary milestone of the Great East Japan Earthquake drew near, the Tokyo Metropolitan Government and Tokyo International Forum Co., Ltd. organized and held the “Let’s Send Good Spirits from Tokyo! Reconstruction Support 2016” event for the people of Tokyo to convey the thought that reconstruction still seems some way off and to call for the continuation of support. For the stage event in Hall B5, lectures were given by narrators, dances performed and calls for support made, while participants listened with serious expressions. Last to appear on stage was a choir from Fukushima Higashi High School. In the Hall B5 lobby, there were displays of, for example, messages of support from the people of Tokyo and special cards showing support from cartoonists. Booths selling produce from the three Tohoku were set up in the Plaza.

Dates held : January 29-30, 2016 **Organizers :** Tokyo Metropolitan Government, Tokyo International Forum Co., Ltd.
Number of visitors : approx. 263 (Hall B5, stage event only)



Joint Organization / Cooperative Business

Tokyo International Forum cooperates on activities designed to create a lively local ambience.

Tokyo Michiterasu 2014

Staged with illuminations at Tokyo Station and its environs, a light show event that carried the wish from the Tokyo-Marunouchi areas to “Brightly Light the Future.” In addition, famous people who had made the headlines in 2015 and people well known in the area appeared as motifs on the “Lighting Bench Art” installation. An art objet depicting Ieyasu Tokugawa was placed at Tokyo International Forum, and many people were seen having their photos taken with the founder of the Edo shogunate as a memento.

Dates held : December 1-27, 2015
2016 Kobe Memorial
January 17 Gathering of Lights

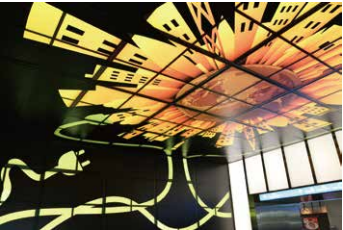
Mourning the victims of the Great Hanshin Earthquake, which struck early in the morning of January 17, 1995, this event also aims to provide an opportunity to increase awareness about routine disaster prevention and mitigation measures. The event has been held at Tokyo International Forum since 2003.
Date held : January 16, 2016



LIGHTING OBJET 2015

Under the dual concept of “global environmental protection and a peaceful future for our children” and “the continuation of reconstruction assistance” (for the areas affected by the Great East Japan Earthquake of March 2011), light works by artists active on the global stage were displayed at four venues in the Marunouchi area. Tokyo International Forum displayed art objets created by Tatsuya Ishii. Using Tokyo International Forum’s light walls as canvases, the Future Brightness Award design contest for students was also held. The work selected for the grand prize was displayed on the light walls on the first underground floor at the Yurakucho Line side entrance.

Dates held : December 17-27, 2015



Major Facility Renovations

Fiscal 2015 was the seventh year of a 10-year repair and improvement plan that started in 2009 to repair and improve facilities and equipment at Tokyo International Forum. The purpose of this work is not only to restore the buildings to their original condition when they were completed, but also to improve their functionality in

response to customer requests while enhancing safety and security and making them easier on the environment. Aside from large-scale repair work carried out under the 10-year plan, as appropriate we undertake repair and refurbishment work designed to increase customer convenience and to realize further improvements in safety and security.

We would like to present the major construction work carried out in fiscal 2015.



Renovation of Signs

With the aim of creating high-quality facilities that are easily navigated by visiting customers, we reviewed and renovated the signs on the premises, for example by standardizing the pictograph signs, installing quadrilingual (Japanese, English, Chinese, and Korean) displays, and replacing the internally illuminated-type signs with those lit by LEDs. We also adopted more vivid colors for the color coding of the signs for each block, thereby making them more easily visible.

Renovation of Hall E (former Exhibition Hall)
Over a total of around four and a half months, we closed this hall and carried out renovation work that included replacing 30 air-conditioning units in the roof, reinforcing the measures to prevent ceiling panels from falling, replacing the standard downlights with LEDs, and repainting floors and columns. Not only repairing and improving the facilities and equipment, we planned to save energy and make further improvements in safety.



Replacement of Large-Type Event Information Display Board

The large-type event information display board installed in the upper part of the Hall E lobby displays information (event name, facility name, event times) on events being held inside the facilities on that day. We changed the display board from an LED display to a liquid crystal display, thereby making the display brighter and easier to see than ever before. Being able to display video and still images in color has heightened the display’s pulling power.

Glass Building Steel-Framed Roof Renovation Work

We are repainting parts of the Glass Building's steel-framed roof and carrying out repair and improvement work to return the roof to its condition at the time Tokyo International Forum was completed. To carry out the work safely, a protective sheet covering the entire area has been affixed to the lower part of the roof's steel frame. Although this means that the beautiful ceiling beams are not visible from inside the Glass Building, upon planned completion in September 2016, the roof will have been repaired and improved to again appear in the eye-catching form of the time when it was first completed.

Hall B7 / Hall B5

Suspended Structure Mechanisms Replacement of control systems

In addition to measures to counteract the ageing process, we have replaced suspended structure control mechanisms as part of our efforts to further enhance safety and improve their operability and workability.



Hall B5

Lobby Renovations

The moss-colored curved wall is a striking feature of the impressive Hall B5 Lobby. Including this curved wall, we have repaired and improved all the lobbies by, for example, repainting the aluminum louvers and panels on the Imperial Palace side and by applying a powder coating to the ceiling.



Hall D7

Renovation of pullout-type storage seats

We implemented devices by which we could heighten customer convenience and comfort, such as by adopting a buffering system to reduce the sound of the impacts made when customers leave their seats and adding pockets to the backs of the seats in which to place pamphlets and other items. Consideration was given to saving energy by, for example, changing the floor lighting from standard to LED lamps.



Hall B7

Lobby Renovations

We replaced the standard lighting in the ceiling of Hall B5 and the light wall lighting fixtures with LEDs. By doing so, we were able to make significant savings on our electricity consumption while retaining the texture of the soft lighting.



Hall B5

Change to LED Lighting

We replaced the standard lighting in the ceiling of Hall B5 and the light wall lighting fixtures with LEDs. By doing so, we were able to make significant savings on our electricity consumption while retaining the texture of the soft lighting.



Block B / Block D

Outer wall building renovation work

Having renovated the exteriors of the buildings by replacing the coatings and seals of outer wall panels and window sashes as well as renovating cracked and damaged PC, we returned them to the condition they were in at the time Tokyo International Forum was completed. Doing so also has the effect of maintaining and prolonging the life of the building's structure.



Hall B5

Replacement of Air-conditioning Units

In addition to measures to counteract time-related performance degradation, we replaced the air-conditioning units in Hall B5 to save energy. By doing so, we can expect a reduction in our electricity consumption.



Block D

Renovation of lobbies on floors 3-7

We renovated the lobbies on floors 3-7 of Block D, such as in Halls D5 and D7. We made repairs and improvements to the lobby surroundings by relaying carpet tiles and repainting the ceilings, walls, and doors.



Block B / Block D

Renovation of Light Walls / Light Floors

Light walls and light floors bring out the architectural beauty of Tokyo International Forum buildings. In fiscal 2015, we renovated the light walls and light floors in block B and D, which involved painting the interior of the lighting equipment white and changing to LED lighting. Restoring the light walls and light floors to their original splendor, at the time Tokyo International Forum was constructed, also succeeded in saving energy.



“Central City MICE*” Activities

As one of the foremost convention and art centers in Japan, Tokyo International Forum plays a pivotal role in Japan and Tokyo by attracting and holding MICE.

Located in Tokyo's highly attractive Marunouchi district, Japan's business center and, in recent years, cultural and tourism area, Tokyo International Forum is adjacent to the commercial districts of Ginza and Yurakucho. The location also offers highly convenient transportation access, as Japan's rail travel hub terminal, Tokyo Station, is only a short distance away on the north side, and there is a direct link to Japan Railways (JR) and Tokyo Metro Yurakucho Station to the south. Also within walking distance are the outer garden of the Imperial Palace, the world-renowned Ginza shopping area and the Hibiya theater district. Quite simply, some of the best of what Tokyo has to offer has been condensed into this one area. There is a host of accommodation in the vicinity of Tokyo International

Forum, ranging from international luxury hotels to reasonably priced business hotels. While collaborating with the Tokyo Metropolitan Government and the local area, Tokyo International Forum Co., Ltd. is involved in attracting and serving as a venue for MICE business events at an international scale, as the center of Central City MICE that provides a high-value-added MICE environment throughout the area. This is achieved by linking Tokyo International Forum's advanced functions as a convention facility with the area's overall functions, which have integrated wide-ranging facilities and functions, such as those accommodation and commercial facilities, tourism and business.

*MICE is an acronym for Meeting, Incentive travel, Convention, and Exhibition, a generic term for business and other events that involve the gathering of many people and the undertaking of business activities.

The following large-scale international conference was held in Fiscal 2015.

■ 9th UIC World Congress on High Speed Rail

Held once every few years since 1992, the UIC World Congress on High Speed Rail prides itself on being the world's largest international conference and exhibition specializing in high-speed rail. The conference serves as an event at which those involved in high-speed rail from all over the world can all be present. Participants include government officials, railway operators, railway infrastructure management companies, construction companies, financial institutions, and researchers. Marking the first time for the event was held in Japan, the Tokyo conference was attended by 1,200 delegates from 40 countries. Prime Minister Shinzo Abe attended the opening ceremony and gave the introductory address.

To extend a feeling of welcome to customers from all over the world, members of the Tokyo International Forum information staff wore yukata (lightweight kimono) and were on hand to offer assistance for the duration of the conference. Connected with the Tanabata or Star Festival, the event venue decorations were popular with overseas and Japanese customers alike.



Opening ceremony



Inside the exhibition venue



Exhibition / tape-cutting ceremony



Parallel sessions



Lobby Gallery decorated for the Tanabata festival



A TIF help desk staff member wearing a yukata

Dates held : July 7-10, 2015

Event venues : Halls B5, B7, C, D5, E, Lobby Gallery, G Building conference rooms

Attendees : approx. 1,200 (40 countries)

Topics

Introduction of Segways to Offer Roving Guidance Inside Buildings (May 2015)

In addition to the guidance services available from two information points inside the Tokyo International Forum buildings, building concierges tour around inside the buildings to provide visitors with information. We introduced Segways for this roving information service. Compared with walking, the move is being seen to have the effect of increasing visitor communication activities, as concierges on their rounds by Segway are easier to find and make it easier for visitors to call out to or greet them.



Note: A Segway is an electric power-assisted form of two-wheeled transport. Lacking an accelerator or brakes, movement is controlled by moving the center of gravity. Enables the effective movement of a small turning circle.

Installation of Bidirectional Digital Signage (June 2015)

We installed digital signage (bidirectional information retrieval terminals) at seven locations inside our buildings, including on the Yurakucho Station side on the first floor of the Glass Building, on the underground concourse on the Yurakucho Metro station side, and on the JR Tokyo Station side. Of the infrared touch panel-type, this easy-to-see, 50-inch display digital signage is also easy for visitors to operate and enables them to search for information. The system offers a variety of content, not only information on the facilities inside a building, but also route guidance inside a building, a barrier-free access map, and information on the surrounding area. Assuming that the system would be used by non-Japanese visitors, we have made it possible to select a language. In addition to Japanese, the system can support four other languages: English, Korean, and Chinese (simplified and traditional characters).



Marunouchi Partnership General Security Training (June 2015)

The Marunouchi Partnership in which Tokyo International Forum is a participant conducts general security training jointly with the Metropolitan Police Department's Marunouchi police station. The around 200 people who took part were from civilian corporations and organizations that participate in the Marunouchi Partnership, Marunouchi police station, and the Metropolitan Police Department's riot squad. On the Tokyo International Forum Plaza, which served as the training venue, the training conducted included a lecture related to explosives, the joint disposal of explosive materials by the Metropolitan Police Department and the Tokyo International Forum security unit, a demonstration of police dog training, and earthquake rescue and disaster relief training. Utilizing dogs trained to detect explosives, anti-explosive materials as well as training in the rescue of people from high places, true-to-life training was conducted.



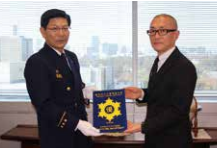
Citation of Appreciation from Marunouchi Fire Department (September 2015)

In addition to routinely working to prevent accidents and disasters from occurring, in the course of a year Tokyo International Forum conducts all types of training geared toward its employees. As a result of these efforts, Tokyo International Forum was recognized for having contributed to the promotion of emergency services—such as by actively promoting in a planned manner the taking of courses on lifesaving to work to improve cooperation in the administration of emergencies and first-aid techniques—and presented with a citation of appreciation from the Tokyo Fire and Disaster Management Agency's Marunouchi Fire Department.



Renewal of “Fire Safety Building” Certification (December 2015)

Tokyo International Forum has received certification as an “Fire Safety Building” since 2006, when the Fire Safety Building Certification System was introduced under the Tokyo Fire Protection Ordinance. A Fire Safety Building is defined as one that has had the fire department perform examinations and inspections of active efforts relating to improvements in fire protection safety measures made by the relevant person at the fire protection property, and is a building certified as an Excellent Fire Protection Property with high fire protection safety. The certification period is stipulated as three years and since three years had elapsed since Tokyo International Forum received its previous certification, the application for recertification was made by Tokyo International Forum Co., Ltd. Having been examined and inspected by the fire department, Tokyo International Forum was certified as having high safety protection and its certification as an Excellent Fire Protection Property renewed.



“Memorial Gallery in NIPPON : A Look Back at the Tokyo, Sapporo, and Nagano Olympics” Held (February / March 2016)

Held in the gallery inside the Forum Art Shop on the first floor level of Tokyo International Forum's Block B from February 4 to March 23, “Memorial Gallery in NIPPON: A Look Back at the Tokyo, Sapporo, and Nagano Olympics,” charted the history of international sporting festivals held in Japan—centered on the 1964 Tokyo Olympics, then the 1972 Sapporo Olympics up to the 1998 Nagano Olympics—in conjunction with the showcasing of valuable exhibits. Including Olympic torch holders, model of the Olympic cauldron, gold, silver, and bronze medals (replicas), and a 1964 Tokyo Olympic Games program, the valuable items displayed inside the venue conveyed the enthusiasm of the times when the events were held.



Tokyo Metropolitan Government / Chiyoda Ward Stranded Persons Response Joint Training (February 8, 2016)

The scenario for this training assumed thousands of persons had been left stranded around railway stations in Chiyoda Ward in the aftermath of an earthquake that had struck directly beneath the Tokyo metropolitan area. The training was conducted with three aims in mind: to facilitate cooperation between the managers at stations, commercial facilities, and public facilities; to prevent unnecessary confusion; and to maintain safety. As a designated Tokyo Metropolitan Government-run temporary stay facility under such circumstances, Tokyo International Forum carried out training in opening as a temporary stay facility, receiving stranded persons and distributing stockpiled supplies to them. Around 100 “stranded persons” took part in the training, which was conducted in a realistic manner. This training was conducted in conjunction with special public telephone installation training and training to upload data to a safety information website portal.



Holding of “&TOKYO” Event Turns Tokyo International Forum Underground Concourse into Huge Exhibit (February / March 2016)

As part of the initiatives being taken toward establishing a “Tokyo brand” that bolsters the image of the city as a tourist destination ahead of the holding of the 2020 Tokyo Olympic and Paralympic Games, the Tokyo Metropolitan Government is conducting a promotional campaign utilizing its “&TOKYO” logo. Banners for this “&TOKYO” event were displayed on the glass surface on the concourse side of the exhibition hall and on the central bridge glass surface. Hung in conjunction with the “&TOKYO” logo was a huge photo banner to convey Tokyo's attractions. To have these extended across the underground concourse and central bridge was truly spectacular. Behind the sheet, the figures of foreign tourists taking photographs could often be seen.



Financial Statements

Balance Sheet

		As of March 31, 2016	
Account	Amount	Account	Amount
(Assets)		(Liabilities)	(Unit: Thousands of yen)
Current assets	5,237,978	Current liabilities	2,349,065
Cash and deposits	3,952,235	Accounts payable-trade	1,138,495
Accounts receivable-trade	355,137	Lease obligations	32,329
Securities	765,253	Accounts payable-other	248,020
Merchandise	142	Accrued expenses	4,041
Supplies	23,827	Income taxes payable	8,358
Prepaid expenses	81,570	Accrued business office taxes	56,526
Deferred tax assets	991	Advances received	824,622
Accounts receivable-other	10,072	Deposits received	8,953
Income taxes receivable	28,433	Provision for bonuses	27,717
Consumption taxes receivable	20,392		
Other, net	262	Fixed liabilities	867,129
Allowance for doubtful accounts	△ 340	Lease obligations	87,740
		Provision for retirement benefits	254,267
Fixed assets	2,063,113	Long-term guarantee deposited	525,121
Property, plant and equipment	839,457		
Buildings	579,126	Total Liabilities	3,216,194
Structures	23,011	(Net assets)	
Vehicles	192	Shareholders' equity	4,084,897
Furniture and Fixtures	126,645	Capital stock	490,000
Lease assets	110,481	Retained earnings	3,594,897
		Legal retained earnings	20,580
Intangible fixed assets	129,567	Other retained earnings	3,574,317
Software	127,661	Retained earnings brought forward	3,574,317
Telephone subscription right	1,905		
		Total Net Assets	4,084,897
Investments and other assets, gross	1,094,088	Total Liabilities and Net Assets	7,301,092
Investment securities	719,179		
Long-term deposits	300,000		
Immobilized trade receivables	438		
Deferred tax assets	74,838		
Other, net	70		
Allowance for doubtful accounts	△ 438		
Total Assets	7,301,092		

Statement of Income

		From April 1, 2015 to March 31, 2016	
Account	Amount	(Unit: Thousands of yen)	
Net sales	7,031,201		
Cost of sales	5,601,264		
Gross income	1,429,936		
Selling, general and administrative expenses	1,342,537		
Operating income	87,399		
Non-operating income			
Interest income	6,759		
Reversal of allowance for doubtful receivables	125		
Miscellaneous income	23,523	30,408	
Non-operating expenses			
Interest expenses	1,183		
Miscellaneous loss	36	1,219	
Ordinary income	116,588		
Extraordinary income			
Gain on donation of noncurrent assets		5,932	
Extraordinary loss			
Loss on disposal of noncurrent assets		15,749	
Income before income taxes	106,770		
Income taxes-current	34,004		
Income taxes-deferred	18,733	52,738	
Net income	54,032		

Note: All amounts less than 1,000 yen rounded down.

History of Tokyo International Forum

From basic concept to opening day

December 3, 1980	Declaration of construction of city hall by My Town Concept Panel Community Section Meeting
August 22, 1985	Announcement of fundamental concept of construction plan for the Tokyo City Hall (new Tokyo Metropolitan Government Building to Shinjuku district, Tokyo International Forum to Marunouchi)
January 24, 1986	Inauguration of the Council of Tokyo Metropolitan Government for constructing Tokyo International Forum (final report on December 24, 1987)
November 2, 1989	Results of the international design competition announced with Rafael Viñoly as the winning architect
October 9, 1992	Construction starts
September 1, 1994	Establishment of Tokyo International Foundation
December 1, 1994	Opening of facility reservations for Tokyo International Forum
May 31, 1996	Construction finishes for Tokyo International Forum
July 1, 1996	Tokyo Metropolitan Government lends Tokyo International Forum to Tokyo International Foundation
January 10, 1997	Grand opening of Tokyo International Forum

Transition from Tokyo International Foundation to Tokyo International Forum Co., Ltd.

January 10 to March 29, 1997	"Tokyo Tokimeki Fiesta" held to celebrate opening of Tokyo International Forum
March 1, 1997	General opening of halls and conference rooms
December 24, 2000 – January 1, 2001	"Forum Millenario Club" year-end event held (held annually until 2005)
December 21, 2001	Announcement of a change in status from a foundation to stock corporation
August 2002	Commemorations of 5th anniversary of Tokyo International Forum" (Tokyo Art Jungle" etc.)
April 4, 2003	Establishment of Tokyo International Forum Co., Ltd. (Representative Director Hirohito Miyake)
May 22, 2003	Iwao Toriumi appointed as President & CEO
July 1, 2003	Tokyo International Foundation transfers business to Tokyo International Forum Co., Ltd.

Tokyo International Forum Co., Ltd.

July 1, 2003	Tokyo International Forum Co., Ltd. begins operations
	Signs changed on the premises, names of some Halls and other facilities are changed, operating hours extended (7:00-23:30), new facility use fee system introduced
July 2003	Neo Stall Village comes to Plaza (every weekday thereafter)
October 2003	Oedo Antique Market comes to Plaza (once a month until September 2005, twice a month from October 2005)
November 1, 2003	Mitsuo Aida Museum opens
June 2004	Installed lighting poles to illuminate the Plaza
July 2004	The Neo Stall Village Super Night was first held. (held each year between April and November since then)
March 2005	Renewal of the General Information Center; installation of lobby gallery lighting (lighting poles and pillars); expansion of the ladies' toilets on the 1st floor basement level of A Block
April 24 – May 1, 2005	La Folle Journée au Japon "Days of Enthusiasm" music festival 2005 held during Golden Week (and every Golden Week since then)
April 2006	Expanded women's restroom in Hall A, installed elevator for Hall E, installed escalator near exit to Tokyo Station, Plaza turned into a non-smoking area
December 8, 2006 – January 15, 2007	Year-end event "Harmonia" held (also in 2007 and 2008)
2007 (all year)	Celebrations held to commemorate 10th anniversary ("Marunouchi Kids Fiesta" etc. in August), "Marunouchi Kids Fiesta" continues to be held in August of every year
June 1, 2007	Conference room G701 (completed in April) now available for reservations
March 2008	Smoking room installed in Hall E lobby
August 2008	Tokyo International Forum Environmental Policy decided
From April 2009	First year of large-scale renovation work based on 10-year Medium-Term Renovation and Improvement Plan
December 2009	Year-end event" Marché de Noël de Strasbourg" held(Also held in 2010)
December 2009	Greenery added to roof and terrace on the seventh floor of the Glass Building
From April 2010	Second phase of large-scale renovation work based on 10-year Medium-Term Renovation and Improvement Plan (Partial renovation of Hall A, replacement of Glass Building conference room air-conditioning, etc.)
March 11, 2011	Great East Japan Earthquake strikes. Tokyo International Forum accepts stranded persons
March 31, 2011	Renovated Hall D1 opens (changed from a theater with fixed seating to an open floor plan)
From April 2011	Third phase of large-scale renovation work based on 10-year Medium-Term Renovation and Improvement Plan (Replacement of Plaza' s trees and plants; partial renovation of halls D5, D7, and E; repair and improvement of part of outer wall/wood rib wall; smoking rooms installed in halls A and C; reservation counter and meeting corner renovation, etc.)
Throughout 2012	Events marking 15th anniversary of opening held (including Michael Sandel special lectures in May, Marunouchi Kids' Jamboree in August)
From April 2012	Fourth phase of large-scale renovation work based on 10-year Medium-Term Renovation and Improvement Plan (Includes partial renovations of halls B5/B7/C, Plaza stone floor repairs)
May 2012	Nursing room opens
From April 2013	Fifth phase of large-scale renovation work based on 10-year Medium-Term Renovation and Improvement Plan (Includes complete renovation of central kitchens, partial renovation of Hall A, replacement of Plaza' s trees and plants, repair and improvement of part of outer wall)
From April 2014	Sixth phase of large-scale renovation work based on 10-year Medium-Term Renovation and Improvement Plan (Includes repairs to Keiyo Line side stairs, preparatory work to repair the Glass Building' s steel roof, installation of the Glass Building' s smoking facility)
December 2014	Year-end TOKYO stylish NIGHT" REFLECTION 2014 / 2015" event held
April 2015	Installation of digital signage inside buildings
From April 2015	Seventh year of large-scale renovation work based on 10-year Medium-Term Renovation and Improvement Plan (Renovation of signs, Hall E renovation, replacement of large-type event information display board, etc.)

Overview of Facilities

As of July 1, 2016		
Name	Tokyo International Forum	
Address	5-1 Marunouchi 3-chome, Chiyoda-ku, Tokyo	
Site area	approximately 27,000 m ²	
Total floor area	approximately 145,000 m ²	
Opening date	January 10, 1997	
Owner	Tokyo Metropolitan Government	
Administrating Organization	Tokyo International Forum Co., Ltd.	
Architect	Rafael Viñoly (U.S.A.), winner of the international design competition	
Halls, etc.	Hall A	Raked auditorium / seating capacity: 5,012 seats (3,025 on the first level, 1,987 on the second level)
	Hall B7	Flat floor / area: 1,400 m ² (dividable into two sections 670 m ² each)
	Hall B5	Flat floor / area: 600 m ² (dividable into two sections 280 m ² and 300 m ²)
	Hall C	Raked auditorium / seating capacity: 1,502 seats (739 on the first level, 363 on the second level, 400 on the third level)
	Hall D7	Flat floor / area: 340 m ² (retractable seating for 100 seats and 180 seats)
	Hall D5	Flat floor / area: 285 m ²
	Hall D1	Flat floor / area: 137 m ²
	Hall E	Area: 5,000 m ² (dividable into two sections 3,000 m ² and 2,000 m ²)
	Conference rooms	D Block:Three conference rooms on floors 4 and 5, Glass Building:31 conference rooms on floors 4 through 7 (10 each on floors 4 through 6, one on floor 7)
	Other	Lobby Gallery:560 m ² , Lounge:224 m ²
Glass Building	Scale	Area: approximately 4,000 m ² (length: about 210m, maximum width: about 30m, height: about 60m)
	Pieces of glass	about 3,600 (1,800 on the west side, 1,000 on the roof, 800 on the east side)
	Dimensions of the glass	2.6m x 2.5m on the walls, 1.7m x 1.9m on the roof
Plaza	Scale	Area: approximately 9,700 m ²
	Plants, etc.	Plants: 42 Japanese zelkova trees, 15 katsura trees, 48 two-seater benches
	Other	Rental spaces : A / about 880 m ² , B / about 670 m ² , C / about 380 m ² , D / about 160 m ²
Parking	Hours, etc.	Third underground floor / 7:00 – 23:30 (all year)
	Parking spaces	420 (including 7 handicap parking spaces)
	Fee	¥200 / 30 minutes
Stores, etc.	Cafes & restaurants	12 locations (six on the first underground floor, four on the first floor, one on the second floor, one on the seventh floor)
	Shops	2 locations (art shop, convenience store)
	Services	3 locations (travel agency, ticket center, relaxation area)
	Museum	Mitsuo Aida Museum / first underground floor, Miraculeuse (wedding) / first floor
Artwork	134 exhibits by 50 artists in total, including "Red and Black" by Ellsworth Kelly	



Hall A



Hall B5



Hall C



Hall E