

Tokyo International Forum Co.,Ltd.

3-5-1 Marunouchi, Chiyoda-ku,  
Tokyo 100-0005, Japan  
Tel. +81-3-5221-9000 (Main)  
<https://www.t-i-forum.co.jp/>

Published: July 2019

# 2018 ANNUAL REPORT



# Message from Our President & CEO



President & CEO  
Kiyofumi Kamijo

I'm very pleased to have this opportunity to express my gratitude for your continued support of our business activities.

The Tokyo International Forum opened as the first convention and art center in Tokyo on the site of the former Tokyo Metropolitan Government building in 1997. Since that grand opening, the Tokyo International Forum has been honored to have its facilities utilized for more than 90,000 events due to its highly advantageous location at the economic heart of Japan, the high-standard of its facilities and equipment, and its provision of high-quality services. Throughout those years, we have also dedicated ourselves to the creation, exchange and dissemination of diverse aspects of culture and information, such as by the planning and running of our own events that contribute to fostering a lively atmosphere in and developing the charms of the local community.

In fiscal 2018, our facilities were used to hold international conferences, such as SIGGRAPH Asia 2018 Tokyo, and many events in a variety of genres, including academic conferences, ceremonies, exhibitions, concerts, musicals. The events we ourselves planned and ran included those that were full of the charm unique to Tokyo International Forum, such as La Folle Journée TOKYO, the Marunouchi Kids Jamboree, and the J-CULTURE FEST/Japan/Peaceful Mind/First Shrine Visit of New Year. We also promoted cooperation with Tokyo Metropolitan Government policies and with local communities through events such as TOKYO FANTASHION and Tokyo Ajiwai Festa (Taste of Tokyo).

Reinforcing our functions as a major facility where large numbers of people gather, we completed major renovations in fiscal 2018. Implemented under a 10-year program started in fiscal 2009, the renovations were designed to maintain and enhance our high-quality services, ensure safety and security, mitigate our environmental impact, and promote universal design.

Tokyo International Forum is scheduled to be the venue for the weightlifting and powerlifting events of the Tokyo 2020 Olympic and Paralympic Games. We will demonstrate to the fullest extent the experience and know-how we have accumulated while working closely with the organizations involved. In addition to making all possible preparations for the success of the Games, we will contribute actively to building momentum and the promotion of cultural programs.

Working toward the further development of Tokyo International Forum, we formulated our 6th Medium-Term Management Plan, directing our attention to what comes after the Tokyo 2020 Olympic and Paralympic Games are concluded. Our entire organization is acting as one to implement measures for the steady achievement of our plan. In fiscal 2018, the first year of the plan, steady progress has been made, with income and expenditure greatly improved compared to the initial plan. We will fully exercise our function as a major Central City meeting, incentive travel, conference, and event (MICE) facility and art center that represents Japan, and we will contribute to the growth of the local community, of Tokyo, and ultimately of Japan.

We look forward to your continuing support and patronage of our project activities at the Tokyo International Forum.

## Company Profile

Name of Company : Tokyo International Forum Co., Ltd.  
Address : 5-1 Marunouchi 3-chome, Chiyoda-ku, Tokyo  
Date established : April 4, 2003  
Main business : 1. Management of halls, conference rooms and other facilities of Tokyo International Forum  
2. Management of the service facilities of Tokyo International Forum  
3. Planning, design, execution and contracting of events for promoting international exchanges  
4. Other business services related to the above

(as of July 1, 2019)

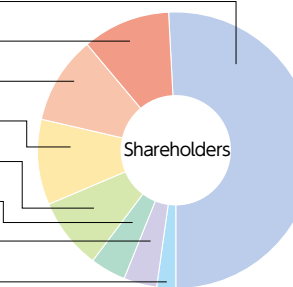
President & CEO : Kiyofumi Kamijo  
Capital : 490 million yen

## Share Information

1. Number of authorized shares  
9,800 shares
2. Number of issued shares  
9,800 shares
3. Number of shareholders  
8

### 4. Shareholders

|   |              |       |
|---|--------------|-------|
| Tokyo Metropolitan Government               | 5,000 shares | 51.0% |
| East Japan Railway Company                  | 1,000 shares | 10.2% |
| Mitsubishi Estate Co., Ltd.                 | 1,000 shares | 10.2% |
| Suntory Holdings Limited                    | 1,000 shares | 10.2% |
| Dentsu Inc.                                 | 800 shares   | 8.2%  |
| Tokyo Electric Power Company Holdings, Inc. | 400 shares   | 4.1%  |
| Nippon Telegraph and Telephone East Corp.   | 400 shares   | 4.1%  |
| Tokyo Gas Co., Ltd.                         | 200 shares   | 2.0%  |



## Management Philosophy

As a leading convention and art center, Tokyo International Forum is a company that aims to create sensations and generate excitement by putting on display for the world the allure of the local community, Tokyo and Japan as a whole.

## Management Principles

- Tokyo International Forum is a leading convention and art center that provides venues and services of the highest quality.
- Tokyo International Forum aims to be the one and only brand as a convention and art center that conveys the "now" of Tokyo and Japan.
- Tokyo International Forum contributes to the local community with a competitive and cooperative spirit, by focusing on building captivating communities in the Otemachi, Marunouchi and Yurakucho areas, the "face" of Tokyo.
- Tokyo International Forum is a venue for the dissemination of information, a symbol of the allure of Tokyo, the hustle and bustle of a town, and the passion of people.
- Tokyo International Forum delights in the happiness and satisfaction of its customers, and strives to be highly sensitive and responsive to the feelings of its customers.
- Tokyo International Forum aims to create high value added in its operations through highly transparent, efficient and highly profitable business management.

## Management

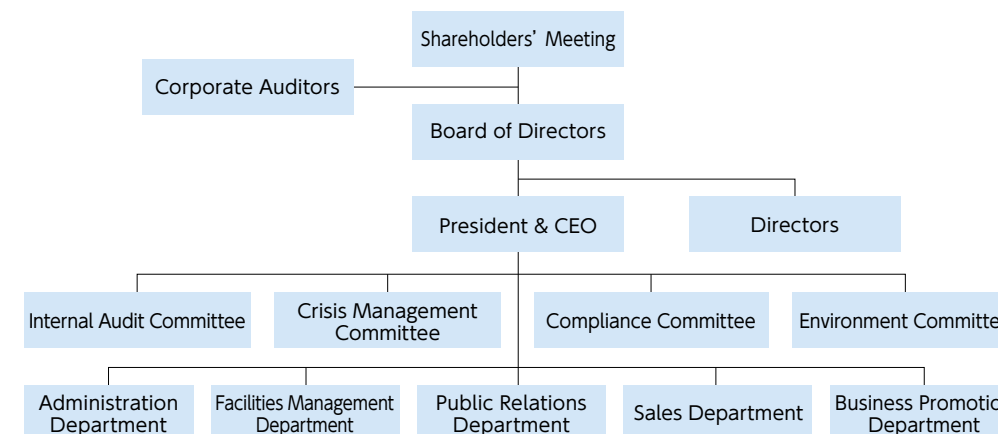
President & CEO Kiyofumi Kamijo  
Corporate Auditor Shinsuke Nakajima

Managing Director Kiyoshi Koike  
Corporate Auditor Takuya Umezawa

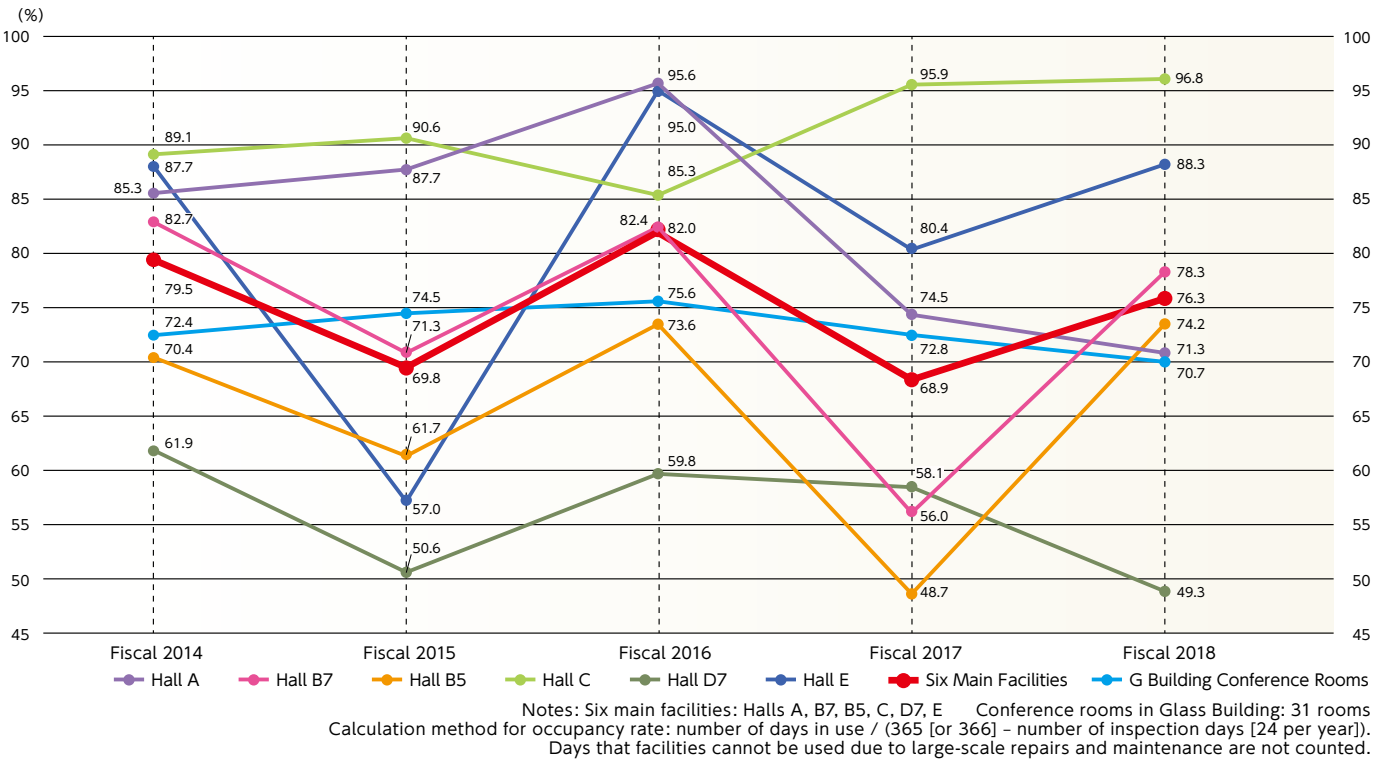
Director Kenichi Hirono

Number of employees : 60

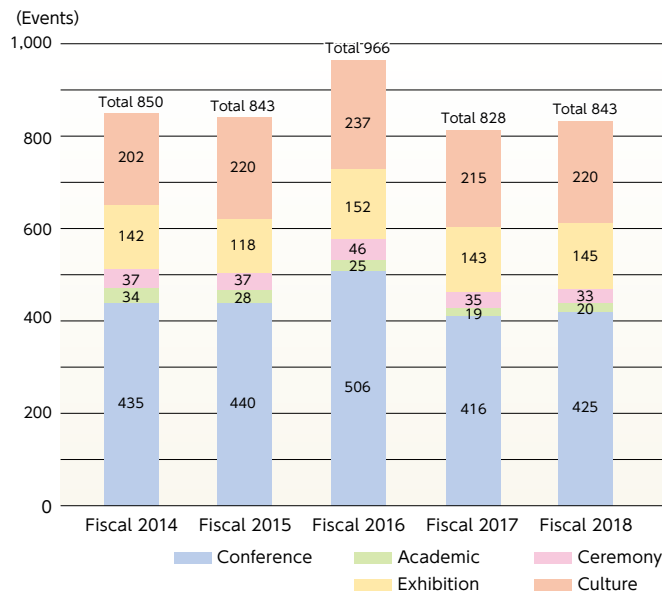
## Organization Chart



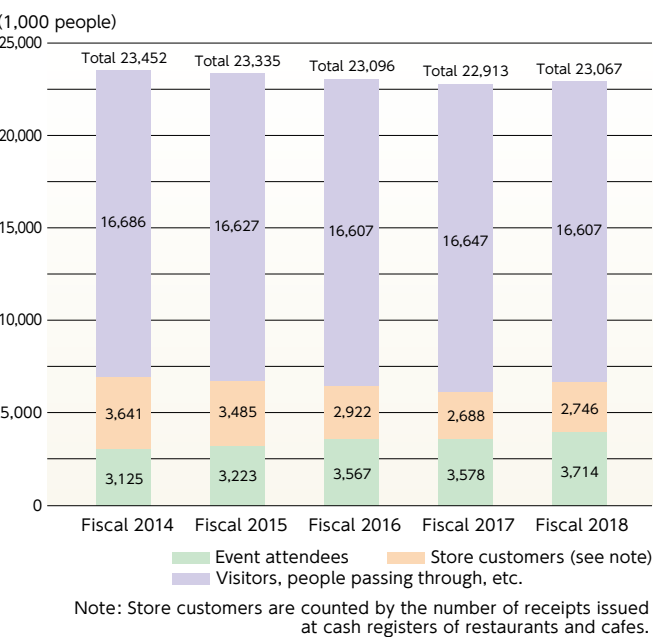
Facility occupancy rate



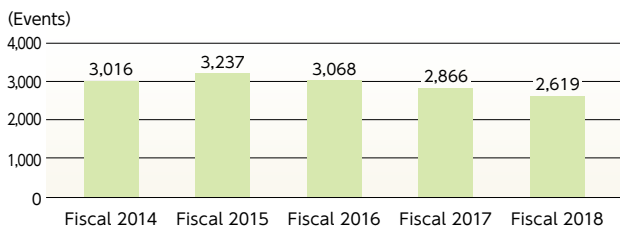
Number of events held at main facilities by type of event



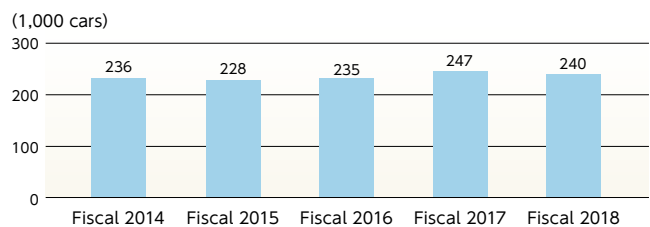
Total number of visitors (estimate)



Number of events held in conference rooms



Number of parking spaces used



| Classification | Event name   | Dates Held  | Event Venues                  |
|----------------|--|---|-------------------------------|
| Conference     | SIGGRAPH Asia 2018   | Dec. 4-7, 2018  | B5/C/D5/E/CR/LG Others        |
|                | Reconstruction Support, Reconstruction Forum 2019 in Tokyo   | Feb. 10, 2019   | B7/Plaza                      |
| Academic       | The 118th Annual Congress of Japan Surgical Society  | Apr. 5-7, 2018  | All Facilities                |
|                | The 62nd Annual General Assembly and Scientific Meeting of the Japan College of Rheumatology   | Apr. 26-28, 2018                                      | All Facilities (excluding A)  |
|                | The 61st Annual Meeting of the Japan Diabetes Society  | May 24-26, 2018                                       | All Facilities                |
|                | The 36th Annual Meeting of the Academy of Clinical Dentistry   | June 9-10, 2018                                       | B7/B5/C/E/G/LG                |
|                | ITI Congress Japan 2018  | June 16, 2018   | B7/B5                         |
|                | The 33rd Annual Meeting of the Japanese Society of Cataract and Refractive Surgery   | June 29-July 1, 2018                                  | B7/B5/C/E/G                   |
|                | The 54th Annual Congress of Japan Society of Perinatal and Neonatal Medicine   | July 8-10, 2018                                       | All Facilities (excluding A)  |
|                | The 65th Annual Meeting of the Japanese Heart Rhythm Society   | July 11-14, 2018                                      | All Facilities (excluding A)  |
|                | The 36th Annual Meeting of the Japanese Society of Aesthetic Dermatology   | Aug. 4-5, 2018  | B7/B5/E/D5/D1                 |
|                | The 28th Annual Meeting of the Society of Ambulatory and General Pediatrics of Japan   | Aug. 24-26, 2018                                      | B7/B5/D7/D5/D1/G              |
|                | The 72nd Annual Congress of Japan Clinical Ophthalmology   | Oct. 11-14, 2018                                      | All Facilities (excluding A)  |
|                |  |   |                               |
| Ceremony       | Ceremony for the 70th Anniversary of Japan's CPA System  | July 23, 2018   | A                             |
|                | 2018 Autumn Conferment of Decorations Ceremony   | Nov. 12, 2018   | C                             |
|                | Ceremony for the 50th Anniversary of Establishment of Labor and Social Security Attorney System  | Dec. 5, 2018  | A                             |
|                |  |   |                               |
|                | Ceremony for the 70th Anniversary of Establishment of Dental Hygienists Act & 65th Anniversary of the Founding of Japan Dental Hygienists' Association | Feb. 17, 2019   | B7                            |
|                |  |   |                               |
|                |  |   |                               |
|                |  |   |                               |
|                |  |   |                               |
|                |  |   |                               |
| Exhibition     | Monozukuri-A Celebration of Japanese Artisanal Techniques  | Aug. 8-10, 2018                                       | E/LG                          |
|                | Marunouchi Kids Jamboree 2018  | Aug. 14-16, 2018                                      | B7/B5/E/CR/LG/GL/Plaza Others |
|                | Fusion Exhibition of Edo, TOKYO Waza and the Techno  | Oct. 2, 2018  | E                             |
|                | Taste of Tokyo / Tokyo Ajiwai Festa 2018   | Oct. 5-7, 2018  | Plaza                         |
|                | Financial Information Technology 2018  | Oct. 25-26  | All Facilities (excluding A)  |
|                | The 28th International MICE Expo 2019  | Feb. 28, 2019   | E2                            |
|                |  |   |                               |
| Culture        | La Folle Journée TOKYO 2018  | May 3-5, 2018   | All Facilities                |
|                | TOKYO FANTASHION 2018 May  | May 12, 2018  | B5                            |
|                | AUSTIN MAHONE JAPAN TOUR 2018  | June 1, 2018  | A                             |
|                | LOVE in Action Meeting   | June 12, 2018   | C                             |
|                | N Sports! 2018   | Sept. 14-16, 2018                                     | E1/D1/LG/CR/Plaza             |
|                |  |   |                               |
|                |  | Sept. 10, 2018  | D1                            |
|                | Monday Cine-Salon & Talk   | Nov. 19, 2018   | D7                            |
|                |  | Jan. 21, Mar. 18, 2019                                | B5                            |
|                |  |   |                               |
|                | LIVE DA PUMP 2018 THANX!!!!!!  | Oct. 10, 2018   | A                             |
|                | YOSHIKI CLASSICAL 2018   | Nov. 12, 15, 2018                                     | A                             |
|                | SOMETHING ROTTEN!  | Dec. 17-30, 2018                                      | C                             |
|                | JOHNNY'S Count Down Live merchandise booth   | Dec. 28, 2018   | E                             |
|                | ayumi hamasaki LIVE TOUR -TROUBLE- 2018-2019   | Dec. 31, 2018   | A                             |
|                | DRAGON QUEST Wind Orchestra Concert  | Dec. 31, 2018   | C                             |
|                | JOHNNY'S King & Prince ISLAND merchandise booth  | Jan. 1-6, Jan. 14-20, 2019                            | D1                            |
|                |  |   |                               |
|                | J-CULTURE FEST./Japan/Peaceful Mind/First Shrine Visit of New Year   | Jan. 2-3, 2019<br>(Exhibition part ran until Jan. 15) | B7/B5/E/LG                    |
|                | La Rose de Versailles 45: The Track Record of 45 Years and The Path to the Future  | Jan. 27-Feb. 9, 2019                                  | C                             |

A: Hall A, B7: Hall B7, B5: Hall B5, C: Hall C, D7: Hall D7, D5: Hall D5, D1: Hall D1, CR: Conference Rooms, E: Hall E (overall), E1: Hall E1, E2: Hall E2, LG: Lobby Gallery, GL: Lounge,



# Events Planned and Run by Tokyo International Forum

Taking advantage of its venues as spaces to create and disseminate culture, Tokyo International Forum carries out its own events that bring a lively ambience to the area and make a contribution to the people of Tokyo and society as a whole.

## La Folle Journée TOKYO 2018



Its fantastic bass notes shaking TIF's foundations, the Yekaterinburg Philharmonic Choir from Russia makes its LFJ debut.

The epoch-making La Folle Journée music festival originated at Nantes in France, and the Tokyo International Forum held the first La Folle Journée au Japon "Days of Enthusiasm" music festival (La Folle Journée in the present day, hereafter LFJ) in Japan in 2005. In that first year, festival visitors totaled 320,000, and it has since grown into one of the world's greatest classical music festivals, being held every May during the Golden Week holidays in Tokyo. Among the special features of LFJ: (1) Every year it has a novel new theme; (2) 2,000 or more artists perform 300 or more concerts; (3) each performance lasts about 45 minutes, and concerts continue from morning to evening; (4) first-rate performances cost a reasonable 1,500 yen and up;

|        |   |
|--------|---|
| Theme  | UN MONDE NOUVEAU (TOWARDS A NEW WORLD)  |
| Dates  | May 3-5, 2018   |
| Venues | Marunouchi area: All Tokyo International Forum facilities, Otemachi-Marunouchi-Yurakucho, Kyobashi, Ginza, Nihonbashi, Hibiya<br>Ikebukuro area: Tokyo Metropolitan Theatre, Ikebukuro Nishiguchi Park, Minamikebukuro Park, others |

and (5) free events, such as the area concerts, also enhanced, and fill the city with music in festive mood; (6) everyone from babies to classical aficionados can enjoy the picnic mood. The 14th festival held in 2018 expanded beyond the "Marunouchi area" around Tokyo International Forum, including Otemachi-Marunouchi-Yurakucho/Kyobashi/Ginza/Nihonbashi/Hibiya, into the "Ikebukuro area" around Tokyo Metropolitan Theatre, delivering a variety of music. The theme, "UN MONDE NOUVEAU (TOWARDS A NEW WORLD)," shone a spotlight on a number of masterpieces created when the spirit of musicians open to new worlds encountered different, artistically immensely stimulating cultures.

|                              |  |
|------------------------------|--|
| Number of visitors           | Approximately 432,000 (cumulative total)   |
| Number of performing artists | 2,458 (1,050 [468 from overseas and 582 from Japan] of whom gave admission fee-based performances) |
| Number of performances       | 451 (of which 178 were fee-based performances)   |
| Number of tickets sold       | 119,177  |



Teiko Maehashi's long-awaited first performance at LFJ



Pavel Sporcl & Gipsy Way present an exciting set that pushes the classic boundaries.



Workshop for Children "Music Atelier for Children"



A special concert presented in collaboration with players of Japanese traditional musical instruments to evoke the Silk Road.



Active artists from around the world teach young performers in the Master Class.



"Concert from Age 0" Communicating with artists after playing



The majestic oratorio "Exodus" presented with impressive narration by Kanji Ishimaru & Rei Asami.



Area concerts fill the streets with music.\*

©Team Miura (except \*)

## Marunouchi Kids Jamboree 2018

Based on the wish to provide children with the excitement, discoveries, and surprises that foster future dreams, the Marunouchi Kids Jamboree began in 2007 to commemorate the 10th anniversary of the opening of Tokyo International Forum. Since then, having become established as a participatory "hands-on" event for children and their families during the summer vacation, the event has received the support of many people. The event consists of participation programs by companies and organizations together with original TIF programs. The program of the 12th Jamboree in 2018 is shown as follows. The three days of the Jamboree were a great success that filled the Tokyo International Forum with the smiles and delighted shouts of children.



|  |   |
|--|---|
| Dates  | August 14-16, 2018  |
| Venues   | Hall B7/B5/E, Lobby Gallery, Glass Building Conference Rooms, Plaza, others |
| Number of visitors                               | Approximately 118,000 (cumulative total)                                    |
| Number of planned items                          | 128 items   |
| Number of programs implemented                   | 602 (cumulative total)  |
| Number of cooperating organizations/corporations | 128   |

## Monday Cine-Salon & Talk

The Tokyo International Forum and the National Film Archive of Japan jointly organized Monday Cine-Salon & Talk as a special event from 2016, presenting selected rare documentary films with commentary by a lecturer. In fiscal 2018, the theme was "150 Years in Tokyo—People's Lives and Scenes—" celebrating the 150th anniversary of the establishment of Tokyo Prefecture. Featuring the rediscovery of the charm of Tokyo through the transition of the city from the Edo to the modern period and the people's daily lives, the films were shown in four sessions.



### Wonder Campus

"Planet Earth in the Dinosaur Era", "The World of Animal's Heart and Mind", "Is Our Outer Space the Only One? Is There Only One Type of Black Hole?", "Juni-hitoe and Prince: Kid's Experience of Wearing Ancient Costumes", "The Classroom by Master of Insect", others

### Wonder Club

"This is the Family Newspaper Editing Office", "Tackle the Challenge of Flower Garden Design", "Making Uchiwa Fan from Leaves & Experiment on Forest's Water-holding Capacity", "Waza-den! Let's Learn Making Things in Japan", others

### Wakuwaku Booth

"Let's Take Photos with Real Police Cars and Motorcycles!", "Go for Emergency Operations with Kids Fire Engine!", "Experience Tomorrow's Energy! Let's Feel Hydrogen", "Let's Experience Future Plays with Drones and AR!", others

### Kids Stage

"Performance by Tokyo Metropolitan Police Music Groups", "Soap Bubble Show by Soap Bubble Brothers", "Dogs That Work at the Tokyo Metropolitan Police Department Are Coming", "Let's Experience the Professional Performance of Japanese Drums!", others

### Kids Sports and Kids Amusement Park

"Tokyo Metropolitan Government Paralympic Experience Program NO LIMITS CHALLENGE", "Challenge Weightlifting and Powerlifting!", "Let's Play in a Cardboard Maze"

### Kids Town

"Experience Disaster Prevention: Kids Fire Brigade", "Let's Feel! Cool Spot!", "Experience Kids Cart", "Neo Stall Village", others  
"Challenge the Guinness World Record by Making Origami Fish!" program achieved the new Guinness World Record of "Largest display of origami fish" (this record is as of August 2018).

|                                      |  |
|--------------------------------------|--|
| Lecturer<br>(Session 1 to Session 4) | Satoshi Okamoto<br>(City Formation Historian, Doctor of Engineering)   |
| Date and Time                        | September 10, 2018: Daytime screening from 15:00, nighttime screening from 19:00   |
| Films                                | "Record of The Great Kanto Earthquake", "SCENES OF JAPAN'S EARTHQUAKE DISASTER", "Symphony of Reconstructing Imperial Capital" |
| Piano accompaniment                  | Mie Yanashita  |
| Number of Visitors                   | 188  |
| Date and Time                        | November 19, 2018: Daytime screening from 15:00, nighttime screening from 19:00  |
| Films                                | "Four Seasons of Tokyo", "The New Scene of Ginza"  |
| Piano accompaniment                  | Mie Yanashita  |
| Number of Visitors                   | 282  |
| Date and Time                        | January 21, 2019: Daytime screening from 15:00, nighttime screening from 19:00   |
| Films                                | "The Streets of the Olympics", "Nihonbashi", "Tsukudajima"   |
| Number of Visitors                   | 290  |
| Date and Time                        | March 18, 2019: Daytime screening from 15:00, nighttime screening from 19:00   |
| Films                                | "One Day at a Fish Market", "Tokyo Festival—The 500th Anniversary of the Capital—", "Sweet Acorn of Ginza"                     |
| Number of Visitors                   | 323  |



J-CULTURE FEST/Japan/Peaceful Mind/First Shrine Visit of New Year

J-CULTURE FEST/Japan/Peaceful Mind/First Shrine Visit of New Year started in 2017 as a Tokyo International Forum project to commemorate its 20th anniversary. The event provided opportunities to approach Japanese culture and find new value within. Favorably received by both audiences and exhibitors, the event is held every New Year's Day.

Consisting of mainly two parts, the performance program presented music, dance, and so on to bring Japan's ancient performing arts to life in the present day. "The New Year's Theme Park" featured Japanese culture in various forms centered on New Year's observances. On the occasion of the last New Year's Day in the Heisei era, this year's program was further improved by the addition of, for example, an exhibition of the formal wear worn at court events. We also held "Shinsyun Oshiro Biyori" (New Year's Day in the Castle) beside the statue of Dokan Ota in the Glass Building as an associated event.

|                    |  |
|--------------------|--|
| Dates              | January 2-3, 2019 * The exhibit in Lobby Gallery continued until 15. "Shinsyun Oshiro Biyori" continued until 6. |
| Venues             | Hall B7/B5/E, Lobby Gallery, Glass Building (beside the statue of Dokan Ota)                                     |
| Number of visitors | Approximately 118,000 (cumulative total)   |



"Yukiyama" from "Hatsuharu Kyogen" (New Year's Kyogen) produced by Mansai Nomura

Performance program (admission-charged performance)

"Hatsuharu Kyogen" (New Year's Kyogen) produced by Mansai Nomura

January 2-3 (Hall B5)

With the theme of "Future of Kyogen," this year's program was developed to convey the attraction of Kyogen, including Mansai Nomura explaining the points of Kyogen with live performances, and up-and-coming young Kyogen actors, including Yuki Nomura and Taichiro Nomura, performing its classical comic plays for the new year.

Play: "FUTARI BAKAMA -Two People in One Hakama-," "BO SHIBARI -Tied to a Stick-" and others

Performers: Mansai Nomura, Yuki Nomura, Taichiro Nomura, Kazunori Takano, Hiroharu Fukata, Tanroh Ishida, Goh Iida, Ren Naitoh, Shuichi Nakamura, others



"Poetry, Music, Drama A story of an Emperor -Junihitoe-dresses drifting in the air-"

January 2-3 (Hall B7)

Creative performance of narrative, music and dance incorporating traditional art styles of Kabuki, Japanese dance, and traditional Japanese musical instruments. Introducing episodes of past emperors who faced abdication, this play symbolically expresses the scene of the coronation through a performer wearing real costumes (recreated through scientific verification and traditional methods), including social court dresses and Juni-hitoe.

Performers: Ennosuke Ichikawa (Kabuki Actor), Ayu Manaka (Actress), Ikuko Kawai (Violinist, Composer), Shogo Yoshii (Japanese Instrument Player), Kikunojo Onoe (Japanese Traditional Dancer), others



New Year's Theme Park (free admission)

January 2-3 (Hall E)

The event offered a widely varied program allowing experiences of traditional Japanese culture, including a comparison tasting of traditional New Year's ozoni broth, festive mochi-making, Japanese musical instruments, flower arranging, tea ceremony, Japanese confectioneries, Japanese armor, and kimono wearing. There were also Japanese drums and shamisen music concerts, calligraphy performances and other stage events, kid's sumo wrestling, fun games at festival stalls, kendama, and more.



Japanese Drums Stage Event



Kid's Sumo Wrestling



Kendama

Special Exhibition "The Beauty of the Enthronement and Ceremonies/Cultural Picture Scroll of the Heian Dynasty" (free admission)

January 2-15 (Lobby Gallery)

Embodied the worldview from the Tale of Genji, which is regarded as a symbol of Japanese culture, in addition to an exhibition featuring the Taisho emperor's enthronement, life-size costumes, and a history of formal costume and the festive dress to be worn on special days in the year. A performance of court music and a talk show about dynastic culture were also presented on the mini-stage.



Associated Event "Shinsyun Oshiro Biyori" (New Year's Day in the Castle) (free admission)

January 2-6 (Beside the statue of Dokan Ota on the first floor of Glass Building)

We set up a display beside the statue of Dokan Ota, who built the first castle in the Edo area, where visitors could have fun tracing the Warring States and Edo periods. We held a talk show on the fascination people have for busho (Japanese military commanders) and a kao (written seal) workshop, and had set up a shop selling official goods.



Events Jointly Organized with Tokyo Metropolitan Government

As a base for disseminating cultural information, Tokyo International Forum is actively collaborating with Tokyo Metropolitan Government policies.

TOKYO FANTASHION

TOKYO FANTASHION has been held at the Tokyo International Forum by the up-and-coming young fashion designers on the CREATORS TOKYO team as a fashion event for general consumers every year since 2014. Its purpose is to actively highlight the appeal of Tokyo's eminent fashion brands, to send out the Cool Japan message that originated in Tokyo, and to nurture and support young fashion designers.

In 2018, using the theme of "TOKYO REAL CLOTHES," this included a fashion show and an exhibition with items for sale.

|                                |  |
|--------------------------------|--|
| Organizers                     | Tokyo Metropolitan Government, Tokyo International Forum, TOKYO FANTASHION Executive Committee |
| Dates                          | May 12, 2018   |
| Venues                         | Hall B5  |
| Number of participating brands | 13 brands  |
| Number of visitors             | Approximately 1,040 (cumulative total)   |



Tokyo Ajiwai Festa (Taste of Tokyo)

The Tokyo Ajiwai Festa (Taste of Tokyo) is an event held to spread the word [nationally and internationally] about Tokyo's diverse attractions, including the city's cuisine made from locally sourced ingredients and traditional vegetables. Also bringing together flavors from all over the country and touching on the traditional craft goods that have been shaped by Japan's history and culture, the event has been held every autumn since 2014. The event was held at three venues in the city's Marunouchi, Yurakucho, and Hibiya areas.

The Tokyo International Forum itself served as the Yurakucho area. With "Variety of Nippon" as the theme, booths sold local sake, shochu (a type of liquor), Japanese wine, and other spirits from across Japan, and gourmet kitchen cars from various localities presented their local delicacies. Special local goods from Iwate, Miyagi, Fukushima, and Kumamoto were sold to support these disaster-affected prefectures. There were also stage performances, and the rich variety of delectable flavors attracted large crowds.

|       |                   |
|-------|-------------------|
| Dates | October 5-7, 2018 |
|-------|-------------------|



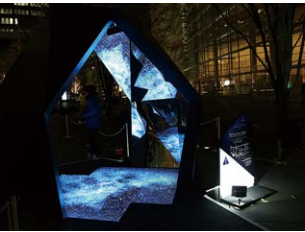
|                    |   |
|--------------------|---|
| Organizers         | Tokyo Metropolitan Government, Tokyo Ajiwai Festa 2018 Executive Committee (Tokyo International Forum took part as a member of the Executive Committee) |
| Number of visitors | Approximately 180,000 (cumulative total)<br>* Total for the Marunouchi, Yurakucho, and Hibiya areas   |

Events Jointly Organized with Local Communities/Cooperative Events

Tokyo International Forum cooperates on activities designed to create a lively local ambience.

Tokyo Michiterasu 2018

This light show communicated the Tokyo-Marunouchi area's wish to "Brightly Light the Future." For 2018, it included "Stadion of Light," "Waltz of Light," and "Reflection of Light." At the Tokyo International Forum, "Reflective Gate" was installed as "Reflection of Light" at the Plaza. We set up the "Reflective Gate" to enable visitors to experience feeling as if they were in a kaleidoscope. Visitors enjoyed the space that was like a different dimension.



|        |   |
|--------|---|
| Dates  | December 24-28, 2018 (*Part of the exhibition starts December 14) |
| Venues | Marunouchi area, Tokyo  |

Lighting Objet 2018

This charity art exhibition proclaimed "global environmental protection and a peaceful future for our children" together with continued reconstruction assistance after the Great East Japan and Kumamoto earthquakes. Works of light art by artists in a variety of fields were displayed at three venues in the Marunouchi area. At the Tokyo International Forum, two unique works were exhibited in the Glass Building.



|       |                 |
|-------|-----------------|
| Dates | Dec 13-24, 2018 |
|-------|-----------------|



# “Central City MICE\*” Activities

Tokyo International Forum plays a leading role in attracting and executing MICE in Tokyo and Japan as a convention and art center that represents Japan.

Located in the capital's Marunouchi district, the center of Japanese business that has enhanced its charm as a cultural area and tourist destination in recent years, Tokyo International Forum is adjacent to the commercial district of Ginza/Yurakucho. In close proximity on the north side is Tokyo Station, a core terminal in Japan's rail transport network, and on the south side direct connection to Yurakucho Station makes access convenient. The outer garden of the Imperial Palace, the famous Ginza shopping area, and the theater district of Hibiya are also located within walking distance of the Tokyo International Forum. There is also plentiful accommodation around

the Tokyo International Forum, from international luxury hotels to reasonable business hotels. We are working on attracting and holding MICE on an international scale by joining those various facilities and functions that are clustered around the whole area—including accommodation, commercial and business facilities as well as sightseeing spots—with the reliable, highly functional Tokyo International Forum as a convention facility. We are also working as the core of “Central City MICE,” providing a high-value-added MICE environment in the whole area with cooperation from the Tokyo Metropolitan Government and other regions.

\* MICE: Acronym of Meeting, Incentive travel, Convention, and Exhibition. A collective term for business and other events that involve the gathering of many people and the undertaking business activities.

We would like to present the major international conferences held in fiscal 2018.

## SIGGRAPH Asia 2018 Tokyo

SIGGRAPH Asia 2018 Tokyo was a conference and exhibition covering computer graphics and interactive technologies in Asia. Working in technology and creative fields, many industry officials from all over the world participated in seeking information about exhibited research results, science, artwork, animation, game, interactive technology, education, and new technologies.

|                    |  |
|--------------------|--|
| Dates              | December 4-7, 2018   |
| Venues             | Hall B5/C/D5/E, Lobby Gallery, G Building Conference Rooms |
| Number of visitors | 9,720 (including 2,323 foreign visitors from 59 countries) |



Plenary Session



Keynote Speech



Visitors lining up for entry to the exhibition.



Visitor information booth for Tokyo & Japan

## Topics

### In-house Firefighting Drill Competition August 2018

Every year, Tokyo International Forum participates in the In-house Firefighting Drill Competition with other companies within the jurisdiction of the Marunouchi Fire Department. In preparation for the outbreak of a fire or natural disaster, each office and building, including TIF, organizes an in-house fire brigade, and the competition pits these fire brigades against each other on the scores from their normal training drills. Three excellent members chosen from each fire brigade make up a team and compete on the speed and accuracy of their firefighting activities (fire break out → call 119 → use of fire extinguisher/evacuation guidance → spraying water using a fire hydrant). In 2018, our team competed well in the women's team and guard team categories.



### Achieved New Guinness World Record™! August 2018

The “Challenge the Guinness World Record by Making Origami Fish!” program of the Marunouchi Kids Jamboree 2018 achieved a new Guinness World Record for the “largest display of origami fish” by making 2,885. At a special event held on August 16 at the Kids Stage, the official Guinness World Records judge handed over a certificate to a representative of the kids who took part. (This record is as of August 2018.)



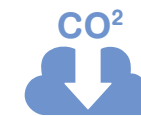
### Renewal of “Fire Safety Building” Certification September 2018

Tokyo International Forum has been certified as a “Fire Safety Building” for 13 consecutive years since 2006, when the “Fire Safety Building Certification Program” specified in the Tokyo Metropolitan Government's Fire Prevention Ordinance was introduced. A “Fire Safety Building” is a building certified as showing good quality in fire prevention and safety. Fire departments will conduct audits and inspections of the proactive efforts for improving fire prevention and safety measures applied by the stakeholders. To keep the building superior in safety and fire prevention, proactive efforts for safety, including periodic training, are required as well as the improvement of the hardware side. Since the three-year period of certification was about to expire, we applied for recertification and went through the audits and inspections conducted by fire departments. As a result of showing good quality in fire prevention and safety performance, we renewed our “Fire Safety Building” certification.



### Cooperation with “Zero Emission Tokyo” October 2018

Tokyo International Forum donated 14,540 tons of credits to the Tokyo Metropolitan Government based on the Tokyo Cap-and-Trade program to cooperate with the “Zero Emission Tokyo” initiative led by the Tokyo Metropolitan Government. These credits are accumulated by measures that include the energy-saving design of facilities.



### Joint Fire Training with Marunouchi Fire Department November 2018

The Tokyo International Forum held a joint fire training exercise with the Marunouchi Fire Department. The point of the training was to practice coordinating between the publicly operated fire brigade (the Marunouchi Fire Department fire brigade) and our in-house fire brigade, and the scenario a fire spreading during an event resulting in group casualties. The main points of emphasis were initial response measures when a fire starts, lifesaving and emergency aid, evacuation guidance, and reporting to and coordinating with fire departments. Triage training at the first-aid center was also conducted. The publicly operated fire brigades took part wearing full equipment, including air cylinders and breathing apparatus, giving this training a very realistic feel. At the end of the training, water was sprayed from the Plaza all over the Glass Building to give publicity to fire prevention.



### Introduction Demonstration Experiments of Mobile Style Communication Robot December 2018-January 2019

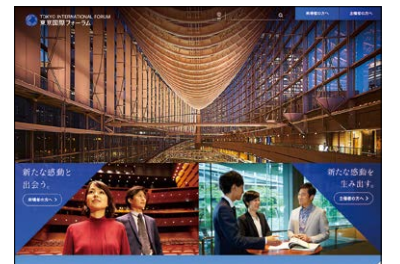
We conducted introductory demonstration experiments of the mobile communication robot “RoBoHoN” for one month from mid-December. This initiative is aiming to project the charm of the Tokyo International Forum, Tokyo,



and Japan by welcoming many people, including foreign visitors, at the information office in Japanese Omotenashi (hospitality) style. Giving a sense of Tokyo in the near future, the robot provided amazing and enjoyable experiments. During the demonstration experiments, we installed RoBoHoN at the information office on the first floor of the Glass Building. It performed greetings, spoke, provided building information, and interpreted between Japanese, English, and Chinese, and we measured accelerated effects in communication and checked for operational issues.

### Complete Renewal of Official Website January 2019

We renewed our official website to make it attractive and easy to use by: (1) making it easy to search for information; (2) making it mobile-friendly, including smartphones and tablets; (3) enhancing the planner's page; (4) strengthening brand communication capabilities; (5) making updates in a fast and easy way.



### New Design for Giant Rugby Ball January 2019

The design of the large rugby ball monument installed by the Tokyo Station side entrance on the first floor of the Glass Building has been changed. This monument, 2.3 meters in height, was installed to build momentum for the Rugby World Cup 2019™ tournament in Japan opening in September 2019 and now has the same design as the official rugby ball. This place has become a popular spot to take pictures with the giant rugby ball featuring the official design.



### New Openings and Renovations of Restaurants June 2018, February 2019

A new restaurant has opened, and a restaurant has been renovated. The array of shopping and refreshment establishments for visitors to the Tokyo International Forum has become more attractive than ever.

#### LA MERE POULARD

Renovated June 2018

The restaurant is famous for a “Fluffy Omelet” with a proud 150-year tradition at Mont Saint-Michel, a World Heritage site in France.



#### 800° DEGREES

Opened February 2019

Pizzeria from Los Angeles selling customizable pizzas. The first marketplace is also attached.





The Tokyo International Forum makes every effort to provide services under the best conditions through day-to-day inspection, repair, cleaning, and so on. To maintain and improve our high-quality services, we implemented large-scale renovation work, starting in 2009 and planned to take ten years. The purpose of this renovation work was not only to assure and enhance customer convenience by supporting changing technology and needs, but also to ensure safety and security, promote universal design, reduce future costs, and mitigate our environmental impact.

We would like to present the major construction work carried out in fiscal 2018.

### Partial Renovation of Hall A



#### ■ Renovation of Elevators

Renovations were made to elevators for general use and for freight. For elevators for general use, disaster management cabinets for storing emergency equipment were installed, intercoms supporting use by visually-impaired people, devices that will automatically take the elevator to the nearest floor in the event of power failure, and other such items were introduced, making the elevators more robust in times of emergency. The safety of elevators for freight has been further improved by installing a surveillance camera with higher resolution and doubling the brake system.



#### ■ Renovation of Escalators

Renovations were made to all the escalators in Hall A. They included the addition of devices to detect low handrail speed and the adoption (with some exceptions) of an automatic low-speed standby operation system. The renovations made the escalators more comfortable to ride while showing consideration to energy conservation.



#### ■ Restroom Renovations

Toilets were replaced with the latest water-conserving models to make them environment-friendly. We also worked to create a universal environment, including an installation for those wearing an ostomy bag and the replacement of some of the men's urinals with larger or height-adjustable models to make them more comfortable for foreign visitors.



The hall was closed for approximately three months during fiscal 2018 to carry out renovation work. Hall A boasts a high rate of operation in its use for large-scale events in a variety of fields, ranging from concerts to international conferences, and the renovations have made this an even more comfortable, safer, and more secure venue.

### Partial Renovation of Hall D7/D5



Hall D7



Hall D5

These halls were closed for approximately three months during fiscal 2018 to carry out renovation work. Hall D7 (340m<sup>2</sup>) and Hall D5 (285m<sup>2</sup>) are flat floor halls located on floors 7 and 5 of D Block, the nearest building to Yurakucho Station. Naturally used singly, they can also be combined with two halls to enable extensive expansion. Famous as high-quality venues for holding small and mid-size events quickly, these halls became more comfortable and eco-friendly.

#### ■ Renovation of Air-conditioning Equipment

Updates were applied to the air conditioning equipment of D Block to add energy conservation and measures against deterioration due to aging. This can be expected to reduce electric power consumption.



#### ■ Renovation of Elevators

Elevators for general use and staff were updated. Disaster management cabinets for storing emergency equipment were installed, intercoms supporting use by visually-impaired people, devices that will automatically take the elevator to the nearest floor in the event of power failure, and other such items were introduced, making the elevators more robust in times of emergency.



### Renovation Without Closure

#### ■ Sanitation Work

Carried out the same restroom renovations with Hall A at part of Hall C, floors 1 and 7 of Glass Building.

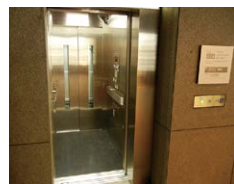
#### ■ Renovation of Elevators in Glass Building

Safety has been further improved by installing a surveillance camera with higher resolution and doubling the brake system.



#### ■ Replacement of Wheelchair Lift with the Elevator

There was a wheelchair lift between the D5 entrance of the Yurakucho Line station and our concourse on the first underground level, but visitors needed to call our staff via intercom to operate it. We replaced this wheelchair lift with an elevator so that visitors can manage it by themselves, enhancing customer convenience.



#### ■ Update of Emergency Generator

We have installed multiple emergency generators so that firefighting equipment operates properly even if the external power supply stops. We overhauled the generators to add measures against deterioration due to aging.



#### ■ Repainted Roof Steel of Hall Building

We carried out construction work on the roof steel of the hall building to bring it back to its original state, including removing rust and dirt and repainting.



#### ■ Replacing Trash Boxes

We sequentially replaced the trash boxes on public flow lines with a transparent type so that the content can easily be confirmed. We also introduced multi-lingual displays on the trash boxes to enhance foreign visitor's convenience.



### Balance Sheet

|  |                          | As of March 31, 2019                    |                          |
|--|--------------------------|---|--------------------------|
| Account                                    | Amount                   | Account                                 | Amount                   |
| (Assets)                                   | (Unit: Thousands of yen) | (Liabilities)                           | (Unit: Thousands of yen) |
| <b>Current assets</b>                      | <b>5,676,614</b>         | <b>Current liabilities</b>              | <b>2,473,748</b>         |
| Cash and deposits                          | 5,166,862                | Accounts payable-trade                  | 1,164,605                |
| Accounts receivable-trade                  | 286,955                  | Lease obligations                       | 35,493                   |
| Securities                                 | 100,323                  | Accounts payable-other                  | 262,931                  |
| Supplies                                   | 29,096                   | Accrued expenses                        | 5,218                    |
| Prepaid expenses                           | 68,485                   | Income taxes payable                    | 127,888                  |
| Advances paid                              | 5,061                    | Accrued business office taxes           | 57,184                   |
| Accounts receivable-other                  | 20,957                   | Accrued consumption taxes               | 27,752                   |
| Other, net                                 | 394                      | Advances received                       | 749,568                  |
| Allowance for doubtful accounts            | △ 1,521                  | Deposits received                       | 9,091                    |
|  |                          | Provision for bonuses                   | 32,536                   |
|  |                          | Provision for directors' bonuses        | 1,478                    |
| <b>Fixed assets</b>                        | <b>2,174,664</b>         | <b>Fixed liabilities</b>                | <b>698,922</b>           |
| <b>Property, plant and equipment</b>       | <b>989,150</b>           | Lease obligations                       | 17,591                   |
| Buildings                                  | 776,234                  | Provision for retirement benefits       | 250,945                  |
| Structures                                 | 14,734                   | Long-term guarantee deposited           | 430,385                  |
| Vehicles                                   | 6,227                    |   |                          |
| Furniture and fixtures                     | 145,042                  |   |                          |
| Lease assets                               | 46,911                   |   |                          |
| <b>Intangible fixed assets</b>             | <b>112,241</b>           | <b>Total Liabilities</b>                | <b>3,172,670</b>         |
| Software                                   | 110,336                  | (Net assets)                            |                          |
| Telephone subscription rights              | 1,905                    | <b>Shareholders' equity</b>             | <b>4,678,608</b>         |
| <b>Investments and other assets, gross</b> | <b>1,073,271</b>         | <b>Capital stock</b>                    | <b>490,000</b>           |
| Investment securities                      | 1,004,662                | <b>Retained earnings</b>                | <b>4,188,608</b>         |
| Deferred tax assets                        | 68,539                   | Legal retained earnings                 | 24,990                   |
| Fixed trade receivable                     | 4,873                    | Other retained earnings                 | 4,163,618                |
| Other, net                                 | 70                       | Retained earnings brought forward       | 4,163,618                |
| Allowance for doubtful accounts            | △ 4,873                  |   |                          |
| <b>Total Assets</b>                        | <b>7,851,279</b>         | <b>Total Net Assets</b>                 | <b>4,678,608</b>         |
|  |                          | <b>Total Liabilities and Net Assets</b> | <b>7,851,279</b>         |

Note: All amounts less than 1,000 yen rounded down.

### Statement of Income

|   |                  | From April 1, 2018 to March 31, 2019 |         |
|---|------------------|--------------------------------------|---------|
| Account   | Amount           | (Unit: Thousands of yen)             |         |
| <b>Net sales</b>                                    | <b>7,460,499</b> |                                      |         |
| <b>Cost of sales</b>                                | <b>5,690,901</b> |                                      |         |
| <b>Gross income</b>                                 | <b>1,769,598</b> |                                      |         |
| <b>Selling, general and administrative expenses</b> | <b>1,421,552</b> |                                      |         |
| <b>Operating income</b>                             | <b>348,046</b>   |                                      |         |
| <b>Non-operating income</b>                         |                  |                                      |         |
| Interest income                                     | 2,887            |                                      |         |
| Miscellaneous income                                | 32,342           |                                      | 35,230  |
| <b>Non-operating expenses</b>                       |                  |                                      |         |
| Interest expenses                                   | 752              |                                      |         |
| Provisions for doubtful receivables                 | 2,386            |                                      | 3,139   |
| <b>Ordinary income</b>                              | <b>380,136</b>   |                                      |         |
| <b>Extraordinary loss</b>                           |                  |                                      |         |
| Loss on disposal of non-current assets              |                  |                                      | 12,861  |
| <b>Income before income taxes</b>                   | <b>367,274</b>   |                                      |         |
| Income taxes-current                                | 113,881          |                                      |         |
| Income taxes-deferred                               | 19,945           |                                      | 133,826 |
| <b>Net income</b>                                   | <b>233,448</b>   |                                      |         |

Note: All amounts less than 1,000 yen rounded down.



From basic concept to opening day

|                   |   |
|-------------------|---|
| December 3, 1980  | Declaration of construction of city hall by My Town Concept Panel Community Section Meeting   |
| August 22, 1985   | Announcement of fundamental concept of construction plan for the Tokyo City Hall (new Tokyo Metropolitan Government Building to Shinjuku district, Tokyo International Forum to Marunouchi) |
| January 24, 1986  | Inauguration of the Council of Tokyo Metropolitan Government for constructing Tokyo International Forum (final report on December 24, 1987)   |
| November 2, 1989  | Results of the international design competition announced with Rafael Viñoly as the winning architect   |
| October 9, 1992   | Construction starts   |
| September 1, 1994 | Establishment of Tokyo International Foundation   |
| December 1, 1994  | Opening of facility reservations for Tokyo International Forum  |
| May 31, 1996      | Construction of Tokyo International Forum completed   |
| July 1, 1996      | Tokyo Metropolitan Government lends Tokyo International Forum to Tokyo International Foundation   |
| January 10, 1997  | Grand opening of Tokyo International Forum  |

Transition from Tokyo International Foundation to Tokyo International Forum Co., Ltd.

|                                   |  |
|-----------------------------------|--|
| January 10 to March 29, 1997      | "Tokyo Tokimeki Fiesta" held to commemorate opening of Tokyo International Forum         |
| March 1, 1997                     | General opening of halls and conference rooms  |
| December 24, 2000-January 1, 2001 | "Forum Millenario Club" year-end event held (held annually until 2005)                   |
| December 21, 2001                 | Announcement of a change in status from a foundation to stock corporation                |
| August 2002                       | Commemorations of 5th anniversary of Tokyo International Forum ("Tokyo Art Jungle" etc.) |
| April 4, 2003                     | Establishment of Tokyo International Forum Co., Ltd.                                     |
| July 1, 2003                      | Tokyo International Foundation transfers business to Tokyo International Forum Co., Ltd. |

Tokyo International Forum Co., Ltd.

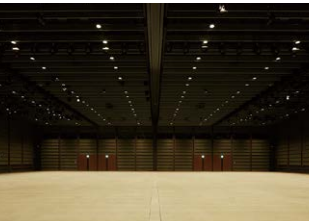
|                         |   |
|-------------------------|---|
| July 1, 2003            | Tokyo International Forum Co., Ltd. begins operations, signs on the premises changed, operating hours extended (07:00-23:30)  |
| July 2003               | Neo Stall Village comes to Plaza (every weekday thereafter)   |
| October 2003            | Oedo Antique Market comes to Plaza (once a month until September 2005, twice a month from October 2005)   |
| November 1, 2003        | Mitsuo Aida Museum opens  |
| June 2004               | Installed lighting poles to illuminate the Plaza  |
| July 2004               | The Neo Stall Village Super Night first held (held each year between April and November since then)   |
| March 2005              | Installed Lobby Gallery panel lighting (lighting poles/pillars), expanded women's restroom on the 1st floor basement level of A Block   |
| April 24 - May 1, 2005  | La Folle Journée au Japon "Days of Enthusiasm" music festival 2005 held during Golden Week (and every Golden Week since then)   |
| April 2006              | Expanded women's restroom in Hall A, installed elevator for Hall E, installed escalator near exit to Tokyo Station, Plaza turned into non-smoking area  |
| 2007 (all year)         | Celebrations held to commemorate 10th anniversary ("Marunouchi Kids Fiesta" etc. in August), "Marunouchi Kids Fiesta (now "Marunouchi Kids Jamboree") continues to be held in August of every year  |
| June 1, 2007            | General opening of Conference room G701 (completed in April)  |
| March 2008              | Smoking room installed in Hall E lobby  |
| August 2008             | Tokyo International Forum Environmental Policy decided  |
| From April 2009         | First phase of large-scale renovation work based on 10-Year Medium-Term Renovation and Improvement Plan   |
| December 2009           | Greenery added to roof and terrace on the seventh floor of the Glass Building   |
| From April 2010         | Second phase of large-scale renovation work based on 10-Year Medium-Term Renovation and Improvement Plan (Partial renovation of Hall A, replacement of Glass Building conference room air-conditioning, etc.)   |
| March 11, 2011          | Great East Japan Earthquake strikes. Tokyo International Forum accepts stranded persons   |
| March 31, 2011          | Renovated Hall D1 opens (changed from theater with fixed seating to open floor plan)  |
| From April 2011         | Third phase of large-scale renovation work based on 10-Year Medium-Term Renovation and Improvement Plan (Replacement of Plaza's trees and plants; smoking rooms installed in halls A and C; reservation counter and meeting corner renovation, etc.)  |
| Throughout 2012         | Events marking 15th anniversary of opening held (including Michael Sandel special lectures in May, Marunouchi Kids Jamboree in August)  |
| From April 2012         | Fourth phase of large-scale renovation work based on 10-Year Medium-Term Renovation and Improvement Plan (Includes partial renovations of halls B5/B7/C, Plaza stone floor repairs)   |
| May 2012                | Nursing room opens  |
| From April 2013         | Fifth phase of large-scale renovation work based on 10-Year Medium-Term Renovation and Improvement Plan (Includes complete renovation of central kitchens, replacement of Plaza's trees and plants, repair and improvement of part of outer wall, etc.)   |
| From April 2014         | Sixth phase of large-scale renovation work based on 10-Year Medium-Term Renovation and Improvement Plan (Includes repairs to Keiyo Line side stairs, installation of the Glass Building's smoking facility, etc.)   |
| December 2014           | Year-end TOKYO stylish NIGHT "REFLECTION 2014 / 2015" event held  |
| From April 2015         | Seventh phase of large-scale renovation work based on 10-Year Medium-Term Renovation and Improvement Plan (Renovation of signs, Hall E renovation, replacement of large-type event information display board, etc.)   |
| June 2015               | Installation of digital signage inside buildings  |
| From April 2016         | Eighth phase of large-scale renovation work based on 10-Year Medium-Term Renovation and Improvement Plan (Included repairs to Glass Building's steel roof, renovation of Hall C [replacement of entire stage floor and lobby carpet, installation of vertical aisle handrails for Floor 2 and 3 seats, lighting over audience seats changed to LEDs], etc.) |
| August 2016             | Expanded lobby galleries (sales started in October)   |
| January - December 2017 | Tokyo International Forum's 20th Anniversary Year (Held 20th Anniversary Projects: J-CULTURE FEST*, Photo Exhibition "A New Voyage for the Future", "Lighting Aquarium" etc.) *J-CULTURE FEST: continues to be held at the beginning of every year  |
| March 2017              | Renovated Information Counter at 1st floor of Glass Building  |
| From April 2017         | Ninth phase of large-scale renovation work based on 10-Year Medium-Term Renovation and Improvement Plan (Renewal of sound equipment in Hall A, installation of handrails next to aisle seats at Floor 2, repair of restroom, Hall B: Updated elevators, renovation of escalators, etc.)   |
| From April 2018         | 10th phase of large-scale renovation work based on 10-Year Medium-Term Renovation and Improvement Plan (Hall D: Updated air-conditioning and elevators, repair of restroom, replaced wheelchair lift with elevator, etc.)   |

(As of July 1, 2019)

|                             |   |   |
|-----------------------------|---|---|
| Name                        | Tokyo International Forum   |   |
| Address                     | 5-1 Marunouchi 3-chome, Chiyoda-ku, Tokyo   |   |
| Site area                   | approximately 27,000 ㎡  |   |
| Total floor area            | approximately 145,000 ㎡   |   |
| Opening date                | January 10, 1997  |   |
| Owner                       | Tokyo Metropolitan Government   |   |
| Administrating Organization | Tokyo International Forum Co., Ltd.   |   |
| Architect                   | Rafael Viñoly (U.S.A.), winner of the international design competition            |   |
| Halls, etc.                 | Hall A  | Raked auditorium / seating capacity: 5,012 seats (3,025 on the first level, 1,987 on the second level)  |
|                             | Hall B7   | Flat floor / area : 1,400 ㎡ (dividable into two sections 670 ㎡ each)  |
|                             | Hall B5   | Flat floor / area : 600 ㎡ (dividable into two sections 280 ㎡ and 300 ㎡ )  |
|                             | Hall C  | Raked auditorium / seating capacity : 1,502 seats (739 on the first level, 363 on the second level, 400 on the third level)                                   |
|                             | Hall D7   | Flat floor / area : 340 ㎡ (retractable seating for 100 seats and 180 seats)   |
|                             | Hall D5   | Flat floor / area : 285 ㎡   |
|                             | Hall D1   | Flat floor / area : 137 ㎡   |
|                             | Hall E  | Area : 5,000 ㎡ (dividable into two sections 3,000 ㎡ and 2,000 ㎡)  |
|                             | Conference rooms  | D Block : Three conference rooms on floors 4 and 5, Glass Building :31 conference rooms on floors 4 through 7 (10 each on floors 4 through 6, one on floor 7) |
|                             | Other   | Lobby Gallery : 700 ㎡, Lounge : 224 ㎡   |
| Glass Building              | Scale   | Area : approximately 4,000 ㎡ (length : about 210m, maximum width : about 30m, height : about 60m)   |
|                             | Pieces of glass   | about 3,600 (1,800 on the west side, 1,000 on the roof, 800 on the east side)   |
|                             | Dimensions of the glass   | 2.6m x 2.5m on the walls, 1.7m x 1.9m on the roof   |
| Plaza                       | Scale   | Area : approximately 9,700 ㎡  |
|                             | Plants, etc.  | Plants : 42 Japanese zelkova trees, 15 Katsura trees, 3 artworks  |
|                             | Other   | Rental spaces : A / about 880 ㎡, B / about 670 ㎡, C / about 380 ㎡, D / about 160 ㎡  |
| Parking                     | Hours, etc.   | Third underground floor / 7:00 - 23:30 (all year)   |
|                             | Parking spaces  | 420 (including 7 handicap parking spaces)   |
| Stores, etc.                | Cafes & restaurants   | 12 locations (six on the first underground floor, five on the first floor, one on the seventh floor)  |
|                             | Shops   | 2 locations (art shop, convenience store)   |
|                             | Services  | 1 location (relaxation area)  |
|                             | Museum  | Mitsuo Aida Museum / first underground floor  |
| Artworks                    | 134 exhibits by 50 artists in total, including "Red and Black" by Ellsworth Kelly |   |



Hall A



Hall B7



Hall C



Hall E