

English Version

2020

Tokyo International Forum  
ANNUAL REPORT  
東京国際フォーラム 年次報告書



## Message from Our President & CEO



President & CEO  
Kiyofumi Kamijo

I'm very pleased to have this opportunity to express my gratitude for your continued support of our business activities.

Tokyo International Forum opened as the first convention and art center in Tokyo on the site of the former Tokyo Metropolitan Government building in 1997. Since that grand opening, our facilities have been utilized for more than 90,000 events thanks to our highly advantageous location, our high standard of facilities and equipment, and our provision of high-quality services.

Throughout those years, we have also disseminated diverse aspects of information and culture, such as by hosting compelling events that foster a lively atmosphere in the local community. This could be considered proof of our steady commitment to serving as an “excitement-creating company,” a management philosophy we have embraced since our opening.

However, the worldwide spread of infections from the novel coronavirus (COVID-19) made 2020 our most difficult fiscal year ever. A state of emergency was first declared in April, and we closed the entire facility for about two months, with many subsequent events also canceled voluntarily. We were also forced to cancel or reduce in size various events that we ourselves organize. And the Tokyo 2020 Olympic and Paralympic Games, for which Tokyo International Forum will serve as the weightlifting and powerlifting competition venue, were postponed for one year.

Under these circumstances, Tokyo International Forum has redoubled its commitment to its business operations while coping swiftly and appropriately with the additional needs that COVID-19 has created for our guests. In addition to providing support to facilitate successful events during the coronavirus crisis, from the perspective of infection prevention, we made every effort to deal appropriately with the changing social environment in conducting our event hosting business, such as by streaming events online.

While our company continues to face a difficult situation, as vaccinations proceed, we anticipate a gradual turn toward economic recovery. In this context, in March 2021 we revised our mid-term management plan and redefined the top management challenges we need to address at this time. Keeping in mind the traditions and ideals we have cultivated thus far, we will strive to act as one organization to overcome the difficult situation that the coronavirus crisis presents.

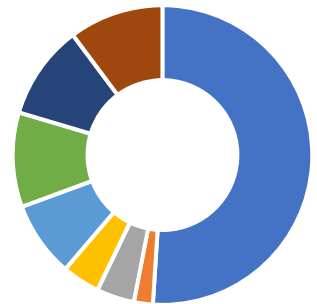
We look forward to your continuing support and patronage of our project activities at Tokyo International Forum.

## Company Profile (As of July 1, 2021)

Name of Company	Tokyo International Forum Co., Ltd.
Address	5-1 Marunouchi 3-chome, Chiyoda-ku, Tokyo
Date of Establishment	4 April, 2003
Main Business	1 Management of halls, conference rooms and other facilities of Tokyo International Forum 2 Management of the service facilities of Tokyo International Forum 3 Planning, design, execution and contracting of events for promoting international exchanges 4 Other business services related to the above
President & CEO	Kiyofumi Kamijo
Capital	490 million yen

## Share Information

1 Number of authorized shares	9,800 shares	4 Shareholders
2 Number of Issued shares	9,800 shares	Tokyo Metropolitan Government 5,000 shares, 51.0% East Japan railway Company 1,000 shares, 10.2% Mitsubishi Estate Co., Ltd. 1,000 shares, 10.2% Suntory Holdings Limited 1,000 shares, 10.2% Dentsu Group Inc. 800 shares, 8.2% Tokyo Electric Power Company Holdings, Inc. 400 shares, 4.1% Nippon Telegraph and Telephone East Corp. 400 shares, 4.1% Tokyo Gas Co., Ltd. 200 shares, 2.0%
3 Number of Shareholders	8	



## Management Philosophy

As a leading convention and art center, Tokyo International Forum is a company that aims to create sensations and generate excitement by putting on display for the world the allure of the local community, Tokyo and Japan as a whole.

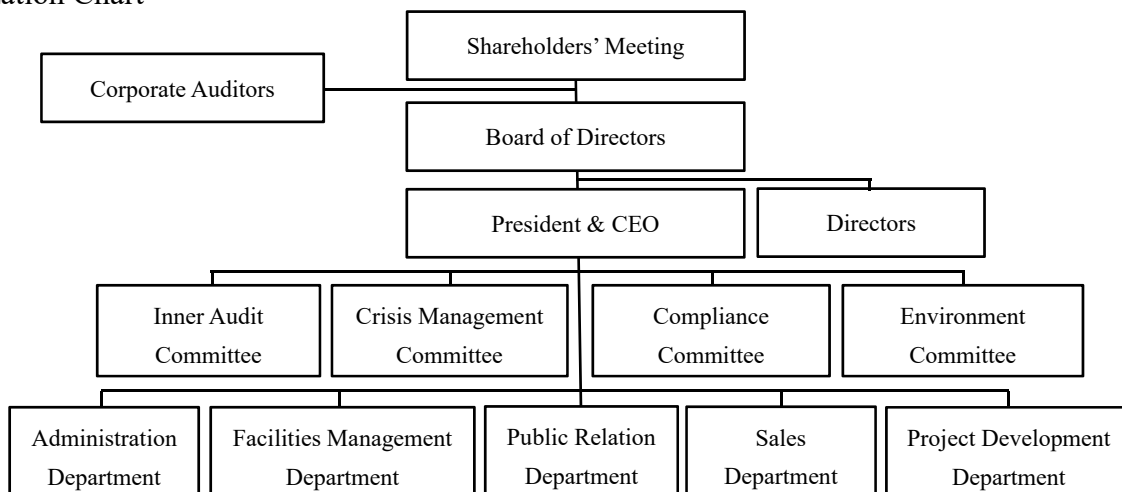
## Management Principles

- Tokyo International Forum is a leading convention and art center that provides venues and services of the highest quality.
- Tokyo International Forum aims to be the one and only brand as a convention and art center that conveys the “now” of Tokyo and Japan.
- Tokyo International Forum contributes to the local community with a competitive and cooperative spirit, by focusing on building captivating communities in the Otemachi, Marunouchi and Yurakucho areas, the “face” of Tokyo.
- Tokyo International Forum is a venue for the dissemination of information, a symbol of the allure of Tokyo, the hustle and bustle of a town, and the passion of people.
- Tokyo International Forum delights in the happiness and satisfaction of its customers, and strives to be highly sensitive and responsive to the feelings of its customers.
- Tokyo International Forum aims to create high value added in its operations through highly transparent, efficient and highly profitable business management.

## Management

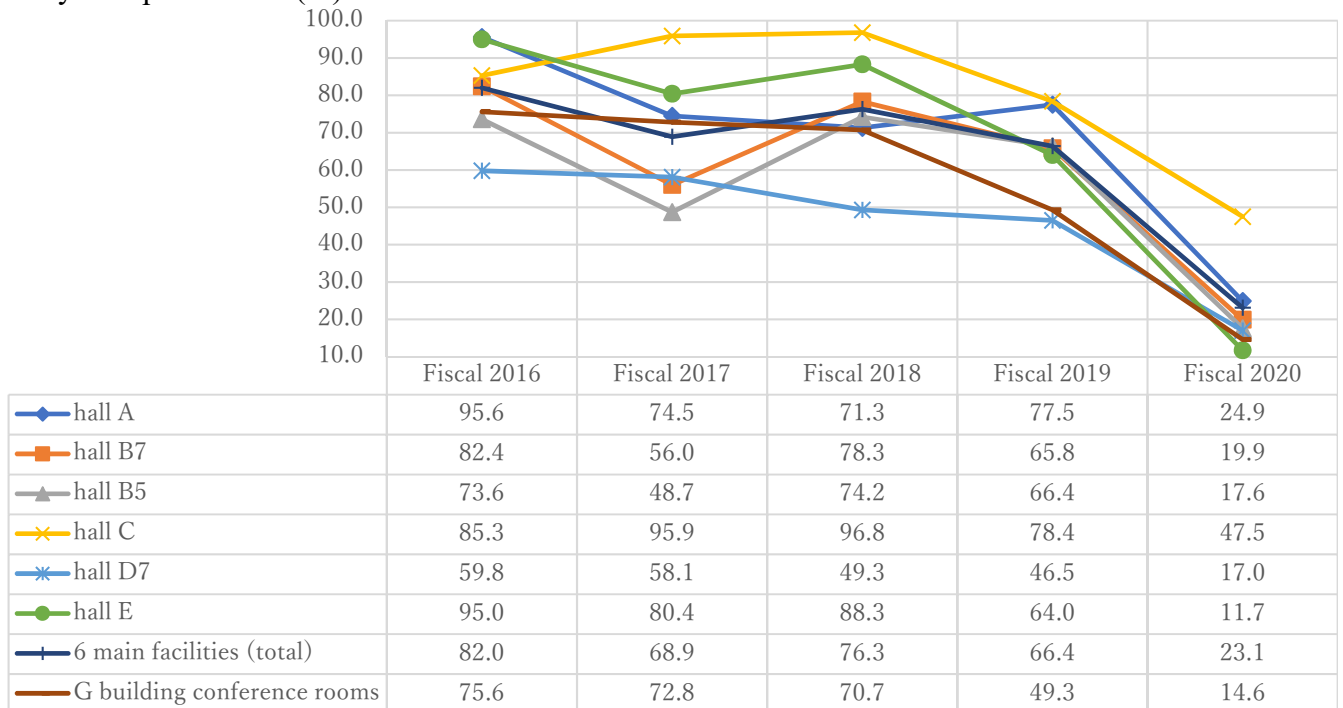
President & CEO	Kiyofumi Kamijo	Managing Director	Yoshiyuki Kuroda	Director	Takashi Utagawa
Corporate Auditor	Shinsuke Nakajima	Corporate Auditor	Tetsu Ji Tani	Number of employees	58

## Organization Chart



# Operational Status of Tokyo International Forum Facilities

Facility occupants' rates (%)



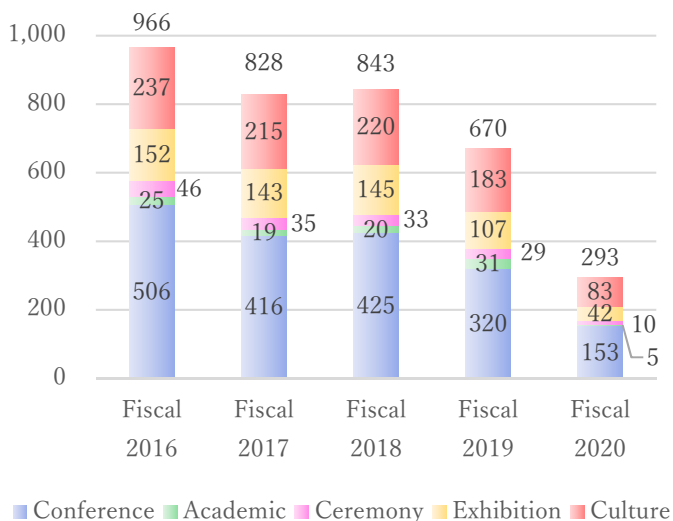
Notes) 6 main facilities: hall A, B7, B5, C, D7, E.

Conference rooms in G building: 31

Calculation method for occupancy rates :  $\text{Number of days in use} \div (365 < \text{or } 366 > - \text{Number of inspection days} < 24 \text{ per year} >)$

Days that facilities cannot be used due to large scale repairs and maintenance are not counted.

Number of events held at main facilities by type of event (Events)

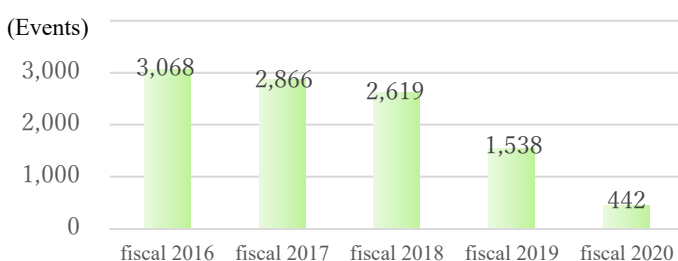


Total number of visitors (estimate) (Thousand People)

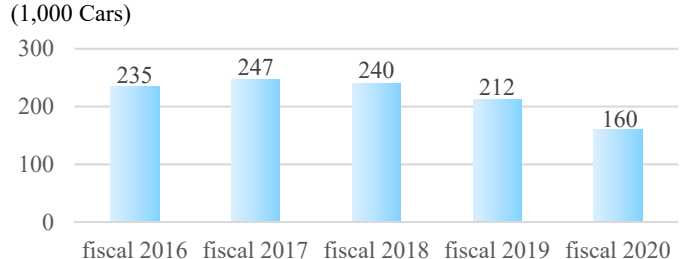


(Note) Store customers are counted by the number of receipts issued at cash registers of restaurants and shops.

Number of events held in conference rooms (Events)



Number of parking lots used (1,000 Cars)



## Major Events held in Fiscal 2020

Classification	Event Name	Dates Held	Event Venues
Conference	ad:tech tokyo 2020	Oct. 29-30, 2020	B7, B5, CR
	2020 Stop Infectious Diseases Tokyo Summit 2020 × Resilience Japan Summit 2020	Nov. 24-25, 2020	B7, P
	Intercollege SDGs Action! AWARDS 2021	Mar. 5, 2021	D7
WSIAcademic	The 117th Annual Meeting of the Japanese Society of Internal Medicine	Aug. 7-9, 2020	A, B7, B5, E
Ceremony	Ceremony Commemorating 60 years of Enforcement of Commerce and Industry Association Act National Meeting of Societies of Commerce and Industry	Nov. 18, 2020	A, D5
	Commemorative Meeting on the 70th Anniversary of Thermal and Nuclear Power Engineering Society	Nov. 26, 2020	C
Exhibition	World biz EXPO 2020 Tokyo	Nov. 5-6, 2020	B7
	JFW Japan Creation 2021	Nov. 18-19, 2020	E, LG
	Premium Textile Japan 2021 AW		
Culture	Premium Reading "A love song can't be sung anymore."	Aug. 8-10, 2020	C
	Japan Philharmonic Orchestra "One-day summer vacation concert 2020" feat. Tohoku Dream Project	Aug. 23, 2020	C
	MISIA SUMMER SOUL JAZZ 2020 ～ Support for Medical Professionals ～	Sep. 19-20, 2020	A
	Slow LIVE '20 in Forum	Sep. 24-27, 2020	C
	Machiko Watanabe Concert	Nov. 1, 2020	C
	Disney on Classic ～ A Magical Night 2020	Nov. 6-8, 2020 Dec. 24-25, 2020	A
	～ Raison d'être ～ Masashi Sada Concert Tour 2020	Dec. 1-2, 2020	A
		Oct. 12, 2020	D7
	Monday Cine-Salon & Talk	Dec. 7, 2020 Mar. 15-Apr. 14, 2021	B5 Online
	John Williams Wind Orchestra Concert 2020	Dec. 15, 2020	C
	J-CULTURE FEST presents 『ETERNITY IS A MOMENT Song & Dance Royal Costume collection』	Jan. 2-3, 2021	B7
	Takarazuka Revue Flower troupe "NICE WORK IF YOU CAN GET IT"	Jan. 9-19, 2021	C
	Sound Horizon Around 15th Anniversary	Jan. 18-19, 2021	A
	Musical Gothic "The Poe clan"	Feb. 3-17, 2021	C
	LIVE EMPOWER CHILDREN 2021	Feb. 15, 2021	A
	NHK "UTA-CON"	Mar. 9, 2021	A
	ALLEGIANCE	Mar. 12-28, 2021	C

A:hall A, B7:hall B7, B5:hall B5, C:hall C, D7:hall D7, D5:hall D5, D1:hall D1, CR:Conference Rooms, E:hall E(entire area), E1:hall E1, E2:hall E2, LG:Lobby Gallery, GL:Lounge, P:Plaza

## Event Hosting

As a space to create and disseminate culture, Tokyo International Forum actively carries out events that bring a lively ambiance to the area and contribute to the people of Tokyo and society as a whole.

In light of the spread of COVID-19, in fiscal 2020 several of our regular events were canceled or reduced in size.

### La Folle Journée TOKYO 2020

The classical music festival “La Folle Journée TOKYO” has been held every year since 2005 during the Golden Week holidays in the Otemachi-Marunouchi-Yurakucho, Kyobashi, Ginza, Nihonbashi, and Hibiya areas in and around Tokyo International Forum.

For 2020, preparations had been underway for a festival commemorating Beethoven's 250th birthday, but in light of the worldwide spread of COVID-19 infections, the event was canceled.



### J-CULTURE FEST:

#### Japan, the Japanese Spirit, and First Shrine/Temple Visit of New Year

With the aim of providing opportunities to approach Japanese culture and find new value within, J-CULTURE FEST started in fiscal 2016 as a Tokyo International Forum project to commemorate the venue's 20th anniversary. Favorably received by many, that legacy continues, with the event held during every New Year's Day holiday.

This event usually consists of “performance programs” featuring Japan’s prominent performing artists of music, kyogen, and kabuki, and the “New Year’s Theme Park,” where guests can experience, discover, and savor the taste of Japan’s traditional culture and New Year’s customs. However, for 2021, to prevent the spread of COVID-19, we narrowed down the program and venue layout to a public performance entitled “J-CULTURE FEST presents ‘Eternity in a Moment: Song & Dance, Royal Costumes Collection.’”

This 2-day program consisted of a spectacular fashion show introducing Japanese royal costumes, such as ceremonial kimonos and formal court attire from the Nara/Heian period to the present day, set to a combination of Japanese and Western style music featuring Takarazuka opera, musical, traditional Japanese dance, a chorus, and dancing.



Dates: January 2 (Sat.) - 3 (Sun.), 2021

Venue: Hall B7

Performers: Tsubasa Imai, Tsubasa Makoto, Shinya Niino, Ayu Manaka, Shinichiro Hino (LE VELVETS), among others

Supervisor: Kikunojo Onoe

Organizers: Izutsu, Tokyo International Forum, Sunrise Promotion Tokyo





## Monday Cine-Salon & Talk

Tokyo International Forum and National Film Archive of Japan have been jointly organizing the Monday Cine-Salon & Talk since 2016, presenting selected rare documentary films with commentary by a lecturer. Each year, films are selected based on a given theme and shown in three to four sessions.

In fiscal 2020, the theme was “The Railway Era,” and along with films introducing the use and development of railways such as the Seikan Tunnel and the subways, which aid people’s lives extensively, we showed the film “Express Niseko Double-headed by C62s,” featuring Japan's last large steam locomotives.

To prevent the spread of COVID-19, we also streamed the “Monday Cine-Salon & Talk” online, so that guests could enjoy it outside of the venue as well.



Scenes at the venue

Lecturer (Sessions 1-3): Shigeru Onoda (Railway Technical Research Institute, Doctor of Engineering and fellow at the Japan Society for Civil Engineers)

### Session 1: The Development of Subways

Date & time: October 12 (Mon.), 2020, from 3:00 pm

(Online streaming dates: October 16 (Fri.) - November 11 (Wed.), 2020)

Films: "The Era of Underground Development - Subways,"

"The 10,900-meter Digging of Yurakucho Line – A Documentary on Construction between Ikebukuro and Ginza 1-chome"

Number of visitors: 150 (Online streaming views: 131 times)



### Session 2: Digging the Railroads

Date & time: December 7 (Mon.), 2020, from 3:00 pm

(Online streaming dates: December 14 (Mon.), 2020 - January 13 (Wed.), 2021)

Films: “The Green Was Protected – A Documentary on Keisei Ueno Station Improvement Work,”

“Tohoku Shinkansen – Underground Ueno Station,”

“Seikan Tunnel - A Documentary on Construction on the Honshu Side, Technology Edition”

Number of visitors: 175 (Online streaming views: 372 times)



### Session 3: Battling Snow (Held online only)

Online streaming dates: March 15 (Mon.) - April 14 (Wed.), 2021

Films: “Locomotives Battling Snow,”

“Snow Track – Express Niseko Double-headed by C62s”

Online streaming views: 369 times



### Session 4: Protecting Life/The Power of Transport

\* Due to the spread of COVID-19, this was postponed to the next fiscal year.

# Topics

## Countermeasures to Prevent the Spread of COVID-19

Tokyo International Forum, with the health and safety of our guests and staff as our top priority, has partnered with the Tokyo Metropolitan Government and related organizations to implement thorough countermeasures against COVID-19, in cooperation with the facilities' event organizers, related parties, and visitors.

### ◇Tokyo International Forum's efforts

#### ○ Antivirus and antibacterial measures for facilities and rental equipment

We have implemented antivirus and antibacterial measures for rental equipment and for the main surfaces in rental facilities, using titania phosphate.

- Titania phosphate is a non-photocatalyst, so it works indoors, even without light, and provides an outstanding antibacterial effect (virus deactivation), as well as deodorant and stain-proofing effects.
- Its antiviral performance was demonstrated using the ISO-21702 virus testing method for the novel coronavirus (SARS-CoV-2) distributed by the National Institute of Infectious Diseases.
- This water-soluble agent is excreted without accumulating in the human body and has no effects on the body.
- After applied, its effects last about five years.



#### <Main places and equipment where applied>

- Flat-floored halls (Halls B7, B5, D7, D5, D1, and E), and the Glass Building conference rooms Handrails, cafe counters, waiting rooms (chairs, tables, door knobs, switches for lights and air conditioning, and refrigerator doors).

- Theater-style halls (Halls A and C)

All audience chairs, handrails, cafe counters, waiting rooms (chairs, tables, door knobs, switches for lights and air conditioning, and refrigerator doors)

- Rental equipment

Chairs, tables, writing tables

#### ○ Sterilizing

In addition to regular daily cleaning, we are wiping down places that guests frequently touch, such as those indicated below, using a disinfectant solution.

- Hand sanitizer placed at every entrance in the facilities.
- Common areas: Doorknobs, escalator and other handrails, and buttons of elevators and vending machines.
- Rental hall areas: Arm rests of audience chairs (after an event ends). We are also happy to conduct special tasks as requested by the event organizers.

#### ○ Ventilation

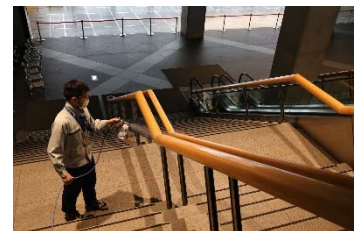
- As for Tokyo International Forum's ventilation system, we have installed ventilation equipment that complies with the Building Standards Act and all applicable laws and regulations, and we are operating it as appropriate in accordance with all applicable laws and regulations.
- Every hall and conference room has ventilation equipment that can provide the required ventilation even at full occupancy.
- The system delivers fresh air everywhere throughout the facilities.

#### ○ Prevention of airborne droplet dispersion

- Acrylic panels installed at information desk and other areas
- Operation of hand dryers in restrooms was suspended.

#### ○ Fixtures and services offered to avoid the risk of infection

- Clear panels for podiums, free-standing clear panels, plastic sheets, social distancing signs, contactless thermometer rental, venue layout with consideration given to social distancing





- Monitoring health of employees and staff
  - Daily health monitoring with temperature checks and other measures
  - Mask wearing
- Partnership with local government  
The QR code for the Tokyo COVID-19 Mimamori Service, provided by the Tokyo Metropolitan Government, is displayed in the facilities, among other measures.



#### ◇ Requests to Our Event Organizers

When planning and executing an event, event organizers are asked to cooperate with regard to the following matters.

- Planning and executing events in accordance with the guidelines issued by the Japanese government, the Tokyo Metropolitan Government, and industry associations
- Pro-actively promoting COVID-19 prevention measures to event participants, encouraging them to install a contact-confirming app, and asking them to provide their contact information
- Observing admission limits on the number of people who enter, in accordance with the guidelines issued by the national government, the Tokyo Metropolitan Government, and industry associations, and adhering to a venue layout that ensures social distancing

#### ◇ Requests to Our Guests

- Diligent adherence to infection prevention measures
  - Please wash and sanitize hands and observe cough etiquette, including proper use of a mask.
  - Guests not wearing a mask are not allowed to enter the facilities.
  - Ensuring social distancing
  - Registering with either the “Tokyo COVID-19 Mimamori Service” or “COCOA (COVID-19 Contact-Confirming Application)”
- Monitoring health
  - Guests with symptoms such as a fever of 37.5°C or higher, a cough, or sore throat are asked to refrain from coming to the facilities.
  - Guests are asked to cooperate with temperature checks upon entering an event venue. (When temperature is 37.5°C or higher, admission may not be allowed.)



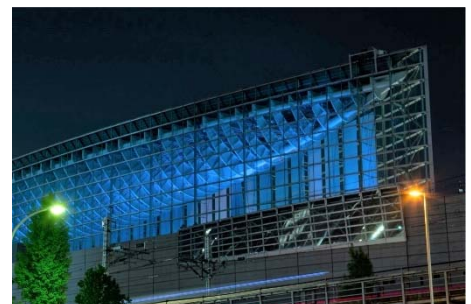
### Installation of Currency Exchange Machine (April 2020)

We installed a currency exchange machine on floor B1 of the Glass Building, on the Tokyo Station side.

### #LightItBlue Illumination to Show Support (May 2020)

To show thanks for the doctors, nurses, and other health care workers dedicated to treating patients infected with COVID-19, Tokyo International Forum participated in #LightItBlue.

#LightItBlue was an effort to show thanks to the health care workers fighting COVID-19 by lighting up buildings in blue. It started in the United Kingdom and spread around the world. In support of this effort, we illuminated the Glass Building with blue light to express appreciation and respect for all those fighting on the front lines.



### Recognition from Tokyo Fire Department (November 2020)

Tokyo International Forum conducts its business on the understanding that safety and security is our unwavering mission. Every day we are highly aware of the importance of fire and disaster prevention management, and we pro-actively carry out our duties based on applicable laws and regulations. We were recognized by the Tokyo Fire Department in their fall fire prevention campaign for our distinguished service, after strengthening our fire prevention countermeasures.



# Environmental Initiatives

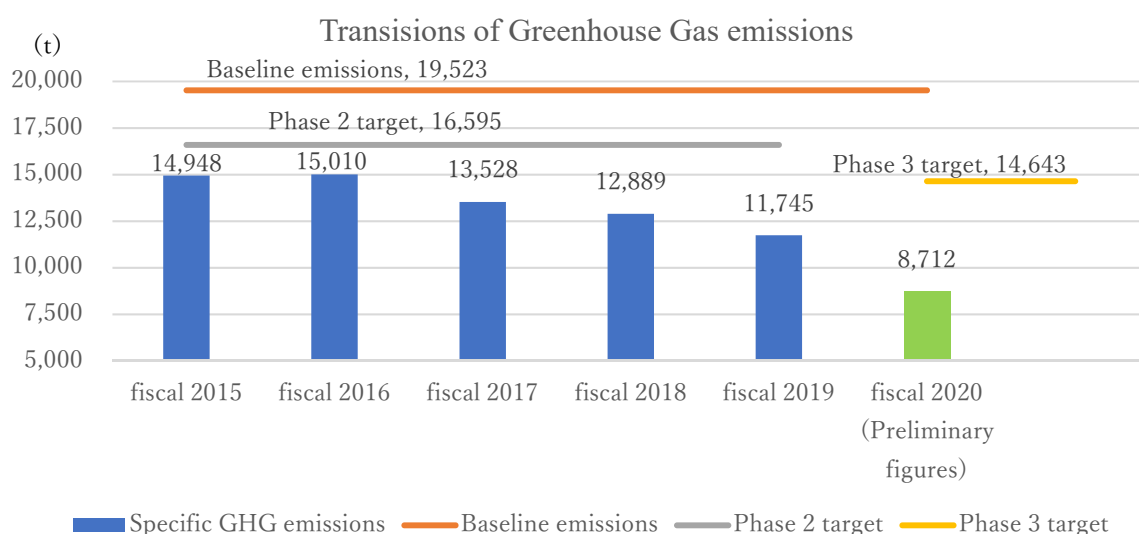
To drive efforts to address environmental issues, Tokyo International Forum has established the Tokyo International Forum Co., Ltd. Environmental Committee (Chair: Executive Officer and General Manager) within the company and is working to reduce our environmental burden.

Tokyo International Forum Environmental Policy		July 2008
<b>Basic Principle</b>		
As Tokyo International Forum aims to be a leading convention & arts center offering the utmost in quality and service, initiatives that help solve environmental challenges are some of our highest priorities. To help conserve the earth's environment, we are actively working to reduce our environmental burden, and we put forth every effort in order to achieve a sustainable society.		
<b>Guidelines for Action</b>		
Tokyo International Forum acts according to the following guidelines in an effort to reduce our environmental burden.		
1. We comply with the laws and regulations relating to environmental conservation.		
2. We consider the environment with respect to the facilities' management, repairs, and improvement, and in addition to conserving resources and energy, we actively engage in heat island countermeasures.		
3. In addition to striving to reduce emissions, we actively utilize environmentally friendly products and services.		
4. We disclose our environmental efforts broadly to the community to promote greater communication.		
5. We have developed a framework to promote environmental countermeasures, and through environmental education and the like, we work to improve overall environmental awareness.		

## 1. Initiative to reduce greenhouse gas emissions

The Tokyo Metropolitan Environmental Security Ordinance requires businesses to reduce greenhouse gas (GHG) emissions. It set a baseline emissions based on the average annual GHG emissions for three years between fiscal 2002 and 2007. Since 2010 we have a plan designed in 5-year increments, with phase 1 (fiscal 2010-14) mandating a 6% reduction from the baseline emissions and phase 2 (2015-19) requiring a 15% reduction, while in phase 3 starting in 2020 (2020-24) we must reduce emissions by 25% from the baseline emissions.

Tokyo International Forum actively implemented environmental countermeasures in both physical aspects such as upgrading to energy-saving air conditioning and lighting equipment as well as administrative aspects such as carefully managing our operation schedule, allowing us to reduce emissions by even more than the required amount. Our fiscal 2020 emissions amount was 8,712 tons (preliminary estimate), which equals 59.5% of the target amount. The major reduction in GHG emissions is mainly due to the facilities' reduced operations as a result of the government's emergency declaration and request to close business and suspend events to prevent the spread of COVID-19.

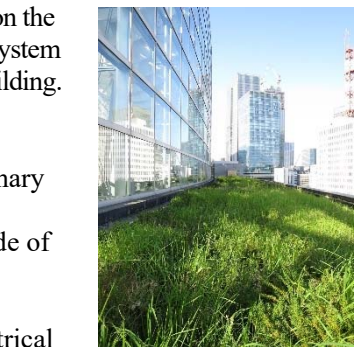


※Baseline emissions: A figure reached by recalculating Tokyo International Forum's average annual GHG emissions between fiscal 2002 and 2007 using the GHG emission factor for phase 2 of the plan.

## 2. Initiatives to reduce environmental burden

In order to conserve energy while maintaining guests' comfort and convenience, the facilities use an energy management system (EMS) to optimize operation of air conditioning and other equipment.

Tokyo International Forum tracks its usage of renewable energy on a real-time basis and displays it using on-site digital signage devices and the official website to disseminate information about its environmental activities in an easy-to-understand manner.



### (1) Solar power generation system

Solar panels are installed on the roofs of the hall buildings. About 600 m<sup>2</sup> in area, they generate 93kW of power, equivalent to the electricity used in about 50 ordinary households. This power is converted to AC power and used in the buildings.

### (2) Solar heat collecting system

The roofs of the halls are equipped with evacuated glass tube-type solar thermal collectors, covering about 400 m<sup>2</sup> with a temperature of 85°C. Water heated using solar heat is supplied to restrooms and showers in the buildings as well as restaurant kitchens.

### (3) Waste water recycling

Waste water from the buildings' washbasins and restaurant kitchens and rain water falling on the premises is processed (biotreatment and membrane separation) in a waste water recycling system and used for flushing toilets, watering plants, and melting snow on the roof of the Glass Building. About 90% of the water used for flushing toilets and other purposes is recycled water.

### (4) Rooftop greening

The roofs of the conference rooms in the Glass Building feature a green belt of rosemary and liriop platyphylla. In addition to dealing with the heat island and reducing the buildings' cooling load, these belts also create refreshing spaces in the structures made of glass, metal, and stone.

### (5) Electrical energy from food waste

Food waste produced by the restaurants and catering service is transformed into electrical energy. Collected food waste is transported to a recycling plant in Ota City where it is transformed into biogas via methane fermentation technology. Biogas is used in the factory's cogeneration system to produce energy in the form of electricity. Most of this electricity is then sold to the community surrounding the recycling plant.

## 3. Provision of environmentally friendly services

Essential to hosting events are the signs used to display event names and give guidance. Because signs are created and disposed of for each separate event, we have long used system panels to reduce waste.

One product Tokyo International Forum uses in our event support service (setup service) is fully recycled and environmentally friendly sign panels called "Reco Boards," which are made from waste produced in the container manufacturing process as well as used panels, which are then made into raw materials again after use.

## 4. Promotion of Eco Mark product use

To reduce our impact on people and the environment, we used Eco Mark certified paint, which is made with fewer volatile organic compounds (VOC), for some painting during maintenance and repairs.

- This paint contains less than 1g/ liter of aromatic hydrocarbons solvent (5 ingredients).
- The amount of preservatives it contains accounts for 0.5% or less of the overall product's weight.
- It contains less than 1g/ liter of VOC ingredients.
- The chemicals (heavy metals, etc.) used in the product satisfy the baseline value.

## 5. SDGs training

In September 2020 a guest instructor from the International Development Center of Japan conducted internal training for Tokyo International Forum employees, outsourcing company staff, and facility workers, covering topics from basic knowledge about Sustainable Development Goals (SDGs) to examples of efforts by industry peers overseas and similar facilities.





# Financial Statements

## Balance Sheet

As of March 31, 2021

Account	Amount	Account	Amount
(Assets)	(Unit: Thousands of Yen)	(Liabilities)	(Unit: Thousands of Yen)
<b>Current Assets</b>	<b>2,997,272</b>	<b>Current Liabilities</b>	<b>1,875,350</b>
Cash and deposits	2,945,650	Accounts payable-trade	745,350
Accounts receivable - trade	185,745	Lease obligations	33,640
Stock account	39,885	Accounts payable-other	313,623
Advance payments	1,191	Accrued expenses	9,536
Prepaid expenses	9,322	Accrued business office taxes	56,540
Advances paid	2,052	Advances received	638,521
Accounts receivable – other	26,993	Deposits received	46,597
Income taxes receivable	11,160	Provision for bonuses	31,539
Consumption taxes receivable	233,060		
Other	116		
Allowance for doubtful accounts	(7,905)		
<b>Non-current Assets</b>	<b>1,820,791</b>	<b>Non-current Liabilities</b>	<b>820,895</b>
<b>Property, Plant and Equipment</b>	<b>1,000,158</b>	Lease obligations	95,069
Buildings	742,054	Provision for retirement Benefits	252,806
Structures	22,001	Long-term guarantee deposits	473,020
Vehicles	7,266		
Furniture and fixture	113,102		
Lease assets	115,734		
<b>Intangible Assets</b>	<b>84,001</b>	<b>Total Liabilities</b>	<b>2,696,246</b>
Software	79,896	(Net assets)	
Telephone subscription rights	1,905	<b>Shareholders' equity</b>	<b>2,121,817</b>
Software in progress	2,200	<b>Capital stock</b>	<b>490,000</b>
<b>Investments and Other assets</b>	<b>736,631</b>	<b>Retained earnings</b>	<b>1,631,817</b>
Investment securities	700,000	Legal retained earnings	27,930
Long-term prepaid expenses	36,561	Other retained earnings	1,603,887
Other	70	Retained earnings brought forward	1,603,887
		<b>Total Net Assets</b>	<b>2,121,817</b>
<b>Total Assets</b>	<b>4,818,063</b>	<b>Total Liabilities and Net Assets</b>	<b>4,818,063</b>

## Statement of Income

From April 1, 2020 to March 31, 2021

Account	Amount	(Unit: Thousands of Yen)
<b>Net sales</b>		<b>1,873,392</b>
<b>Cost of sales</b>		<b>2,932,366</b>
<b>Gross loss</b>		<b>(1,058,974)</b>
<b>Selling, general and administrative expenses</b>		<b>1,319,214</b>
<b>Operating loss</b>		<b>(2,378,189)</b>
<b>Non-operating income</b>		
Interest income	2,146	
Reversal of allowance for doubtful accounts	4,650	
Miscellaneous income	44,045	50,842
<b>Non-operating expenses</b>		
Interest expenses	1,455	
Miscellaneous loss	1,579	3,034
<b>Ordinary loss</b>		<b>(2,330,381)</b>
<b>Extraordinary income</b>		
Compensation income for expropriation of facilities		18,751
<b>Extraordinary loss</b>		
Loss on disposal of non-current assets	171	
Loss on cancellation of events	8,665	8,836
<b>Loss before income taxes</b>		<b>(2,320,466)</b>
Income taxes-current	530	
Income taxes-deferred	91,400	91,930
<b>Net loss</b>		<b>(2,412,397)</b>

## Overview of Facilities

(As of July 1, 2021)

Name	Tokyo International Forum	
Address	5-1 Marunouchi 3-chome, Chiyoda-ku, Tokyo	
Site area	Approximately 27,000 m <sup>2</sup>	
Total floor area	Approximately 145,000 m <sup>2</sup>	
Opening date	January 10, 1997	
Owner	Tokyo Metropolitan Government	
Administrating Organization	Tokyo International Forum Co., Ltd.	
Architect	Rafael Viñoly (U.S.A.), winner of the International Design Competition	
Halls, etc.	Hall A	Raked auditorium; capacity 5,012 seats (3,025 seats on 1st tier; 1,987 seats on 2nd tier)
	Hall B7	Flat-floored hall; floor area 1,400 m <sup>2</sup> (can be divided into two areas, 670 m <sup>2</sup> /670 m <sup>2</sup> )
	Hall B5	Flat-floored hall; floor area 600 m <sup>2</sup> (can be divided into two areas, 280 m <sup>2</sup> /300 m <sup>2</sup> )
	Hall C	Raked auditorium; capacity 1,502 seats (739 seats on 1st tier; 363 seats on 2nd tier; 400 seats on 3rd tier)
	Hall D7	Flat-floored hall; floor area 340 m <sup>2</sup> (retractable seating system 100 seats/180 seats)
	Hall D5	Flat-floored hall; floor area 285 m <sup>2</sup>
	Hall D1	Flat-floored hall; floor area 137 m <sup>2</sup>
	Hall E	Floor area 5,000 m <sup>2</sup> (can be divided into two areas, 3,000 m <sup>2</sup> /2,000 m <sup>2</sup> )
	Conference rooms	D Block: 3 conference rooms on 4F and 5F Glass Building: 31 conference rooms on 4F-7F (10 rooms each on 4F-6F and 1 room on 7F)
	Other areas	Lobby Gallery 700 m <sup>2</sup> ; Lounge 224 m <sup>2</sup>
Glass Building	Scale	Area approximately 4,000 m <sup>2</sup> (length approx. 207 m; maximum width approx. 32 m; height approx. 60 m)
	Number of glass pieces	Approximately 3,600 pcs. (1,800 on west side; 1,000 on roof; 800 on east side)
	Glass dimensions	2.6 m x 2.5 m on walls; 1.7 m x 1.9 m on roof
Plaza	Scale	Area approximately 9,700 m <sup>2</sup>
	Plants, etc.	Trees include 42 Japanese zelkova trees, 15 Katsura trees; 3 artworks
	Other information	Rental spaces: A-approx. 880 m <sup>2</sup> ; B-approx. 670 m <sup>2</sup> ; C-approx. 380 m <sup>2</sup> ; D-approx. 160 m <sup>2</sup>
Parking	Hours, etc.	B3F; 7:00 a.m. to 11:30 p.m. (all year)
	Parking spaces	420 lots (including 7 lots for visitors with disabilities)
Stores, etc.	Cafés & restaurants	9 locations (5 on B1F, 3 on 1F, and 1 on 7F)
	Stores	3 stores (art store, lifestyle store, convenience store)
	Services	1 store (relaxation massage parlor)
	Museum	Mitsuo Aida Museum, B1F
Artworks	Total 134 works of art by 50 artists, including The Red and The Black by Ellsworth Kelly	



hall A



hall B7



hall C



hall E

# History of Tokyo International Forum

## From a basic concept to opening day

December 3	1980	Construction of city hall proposed at My Town Concept Panel Community Section Meeting
August 22	1985	Announcement of basic concept of construction plan for the Tokyo City Hall (construction of new Tokyo Metropolitan Government Building in Shinjuku district, Tokyo International Forum in Marunouchi)
January 24	1986	Inauguration of the Council of Tokyo Metropolitan Government for constructing Tokyo International Forum (final report on December 24, 1987)
November 2	1989	Results of the International Design Competition announced with Rafael Viñoly as the winning architect
October 9	1992	Construction started
September 1	1994	Establishment of Tokyo International Foundation
December 1	1994	Opening of facility reservations for Tokyo International Forum
May 31	1996	Construction of Tokyo International Forum completed
July 1	1996	Tokyo Metropolitan Government lent Tokyo International Forum to Tokyo International Foundation
January 10	1997	Grand opening of Tokyo International Forum

## Transition from Tokyo International Foundation to Tokyo International Forum co., Ltd.

January 10 – March 29	1997	Tokyo Tokimeki Fiesta held to commemorate the opening of Tokyo International Forum
Mar.1	1997	General opening of halls and conference rooms
December 24, 2000 – January 1, 2001		Forum Millenario Club year-end event held (held annually until 2005)
October 1	2001	General opening of Plaza
December 21	2001	Announcement of change in status from foundation to stock corporation
August	2002	Commemorations of 5th anniversary of Tokyo International Forum (Tokyo Art Jungle, etc.)
April 4	2003	Establishment of Tokyo International Forum Co., Ltd.
July 1	2003	Tokyo International Foundation transferred business to Tokyo International Forum Co., Ltd.

## Tokyo International Forum co., Ltd.

July 1	2003	Tokyo International Forum Co., Ltd. began operation; signs on the premises changed; operating hours extended (7:00 a.m. to 11:30 p.m.)
July	2003	Neo Stall Village came to Plaza (every weekday thereafter)
October	2003	Oedo Antique Market came to Plaza (once a month until September 2005, twice a month from October 2005)
November 1	2003	Mitsuo Aida Museum opened
July	2004	The Neo Stall Village Super Night first held (held each year between April and November since then)
March	2005	Installed Lobby Gallery panel lighting (lighting poles/pillars); expanded women's restroom on the B1F of A Block
April 24 - May 1	2005	La Folle Journée au Japon "Days of Enthusiasm" music festival 2005 (now La Folle Journée TOKYO) held during Golden Week holidays (and every Golden Week holidays since then)
April	2006	Expanded women's restroom in Hall A; installed elevator in Hall E; installed escalator near exit to Tokyo Station; designated entire Plaza as non-smoking area
December 8, 2006 - January 15, 2007		"HARMONIA" year-end event held (also held 2007 and 2008)
Throughout	2007	Celebrations held to commemorate 10th anniversary (Marunouchi Kids Fiesta, * etc. in August), *Marunouchi Kids Fiesta (now Marunouchi Kids Jamboree) continues to be held in August of every year



June 1	2007	General opening of conference room G701
March	2008	Smoking room installed in Hall E lobby
August	2008	Tokyo International Forum Environmental Policy decided
From April to December	2009	First phase of large-scale renovation work based on 10-Year Medium-Term Renovation and Improvement Plan
December	2009	“Marché de Noël de Strasbourg” year-end event held (also held 2010)
January	2010	Greenery added to roof and terrace on the seventh floor of the Glass Building
February	2010	First phase of PA system renovation of hall A
From April	2010	2nd phase of large-scale renovation work
February	2011	2nd phase of PA system renovation of hall A
March 11	2011	Great East Japan Earthquake struck. Tokyo International Forum accepted people left stranded by the incident
March 31	2011	Renovated Hall D1 opened (converted from theater with fixed seating to open floor plan)
From April	2011	3rd phase of large-scale renovation work
Throughout	2012	Events marking 15th anniversary of opening held (including Michael Sandel special lectures in May; Marunouchi Kids Jamboree in August)
From April	2012	4th phase of large-scale renovation work
May	2012	Nursing room opened
From April	2013	5th phase of large-scale renovation work
From April	2014	6th phase of large-scale renovation work
December	2014	“TOKYO stylish NIGHT ‘REFLECTION 2014/2015’” year-end event held
From April	2015	7th phase of large-scale renovation work
June	2015	Installation of digital signage in 7 locations inside buildings
From April	2016	8th phase of large-scale renovation work
August	2016	Expanded Lobby Gallery (sales started in October)
Throughout	2017	Tokyo International Forum’s 20th Anniversary Year (Held 20th Anniversary Projects incl. J-CULTURE FEST*, Photo Exhibition "A New Voyage for the Future," and "Lighting Aquarium") *J-CULTURE FEST continues to be held at the beginning of every year
March	2017	Renovated the Information Counter on 1F of Glass Building
From April	2017	9th phase of large-scale renovation work
January	2018	Held “J-CULTURE FEST 2018”
From April	2018	10th phase of large-scale renovation work
August	2019	Held “Hop! Step!! 2020!!! Summer vacation in Tokyo International Forum - Marunouchi kids jamboree Special Session “
March	2020	In light of the worldwide spread of COVID-19 infections, “La Folle Journée TOKYO 2020” was canceled
April	2020	Installation of Currency exchange machine
From April to May	2020	The Tokyo International Forum was temporarily closed due to the declaration of emergency
May	2020	#LightItBlue Illumination to show thanks for the doctors, nurses, and other health care workers
October	2020	Held “Monday Cine-salon & Talk - The Railway Era”
January	2020	Held “J-CULTURE FEST presents ‘Eternity in a Moment: Song & Dance, Royal Costumes Collection’”



TOKYO INTERNATIONAL FORUM  
東京国際フォーラム

Marunouchi 3-chome, Chiyoda-ku,  
Tokyo 100-0005, Japan  
TEL +81-3-5221-9000(Main)  
<http://www.t-i-forum.co.jp>

Issued: July 2021