



TOKYO INTERNATIONAL FORUM
東京国際フォーラム

3-5-1 Marunouchi, Chiyoda-ku, Tokyo, 100-0005
TEL 03-5221-9000 (Main)
<https://www.t-i-forum.co.jp/en>

Issued October 2024



TOKYO
INTERNATIONAL
FORUM
東京国際フォーラム

English Version

FORUM GUIDE

Tokyo International Forum

TOKYO INTERNATIONAL FORUM

The Tokyo International Forum, which is located in Tokyo's central Marunouchi district, is a convention and arts center equipped with a range of facilities including 8 small-to-large-size halls, 31 conference rooms, a symbolic glass atrium, a refreshing and plant-filled ground-level plaza, a variety of shops and restaurants. The Forum is visited by around 23 million people each year, and it serves as a center for promoting and communicating comprehensive culture and information.

The Forum hosts a diverse program of events throughout the year at its distinctive and varied halls and conference rooms, including international conferences, ceremonies, academic meetings, exhibitions, concerts, musicals, and fashion shows. People of all ages from various backgrounds gather here to interact and enjoy the vast array of culture and information on offer.

The Tokyo International Forum is also highly rated for its architecture, and it's known as one of Tokyo's leading landmarks. Boasting many attractive features in its construction and facilities, the Forum provides plenty of aesthetically-pleasing points and enjoyable attractions and ways to pass time for all visitors, from event participants to those just dropping by to have a look.

Tokyo International Forum recalling the history of the site and surrounding area

The site on which the Tokyo International Forum (TIF) was built is the intersection of the Daimyokouji, which housed rows of city residences (kamiyashiki) of Japanese feudal lords (daimyo) in the Edo period, and the current Babasaki-dori where city residences (kamiyashiki) of the Tosa and Awa feudal domains were located.

Since the development of the surrounding area, dubbed the London Block of Marunouchi (Marunouchi Itcho London) for its red-brick European style buildings, and the shift of the Tokyo Government Office Buildings to this area in the same period of 1894 and up to the relocation of these Buildings to Shinjuku in 1991, it has functioned as the modern and present-day center of Tokyo's administration for approximately one century.

The Tokyo International Forum opened in this area in January 1997 as a center for promoting and communicating comprehensive culture and information. It serves as a base for carrying out a wide range of cultural activities, a place for creating and exchanging various information, and a hub for international exchanges.



Former Tokyo Prefectural Office Building (Meiji period)



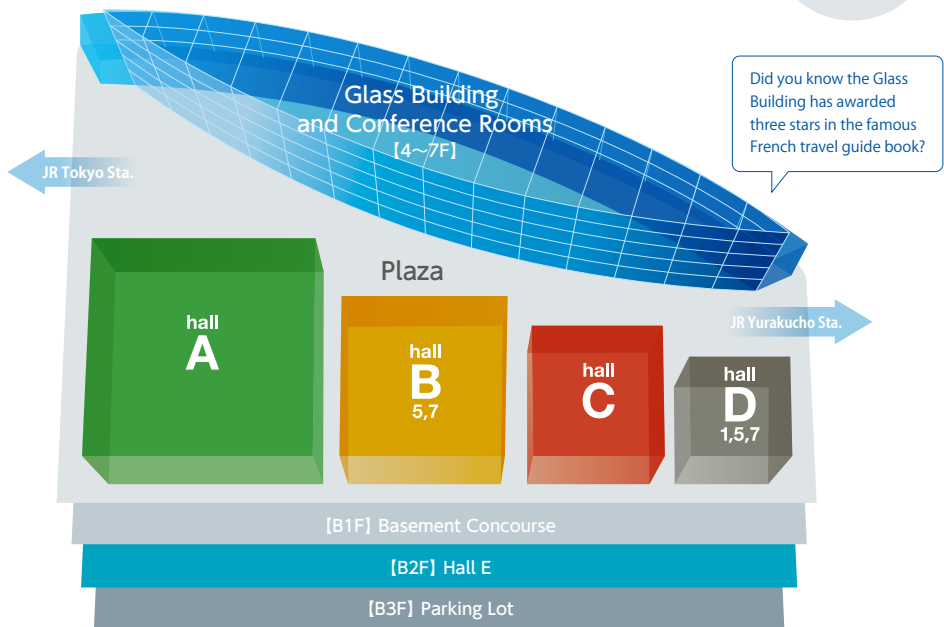
Former Tokyo Metropolitan Government Building 1 (Showa period)



Opening Ceremony of TIF



Facilities Guide



Did you know the Glass Building has awarded three stars in the famous French travel guide book?

Glass Building and Conference Rooms[4F to 7F]



The Glass Building boasts an enormous sundrenched atrium with an open-air structure in the shape of a ship. Spanning from the B1 floor to around 60 metres above, it is the symbol of the Tokyo International Forum as well as the main lobby for all the facilities on site. There are 31 conference rooms located on the 4th to 7th floors of the Glass Building, with the information desk on the 1st floor and a restaurant on the 7th floor.



Plaza[1F]



The Plaza is located in between the Hall Building and the Glass Building, and offers all visitors an area filled with nature for their relaxation and enjoyment. It also hosts a wide range of events such as the Neo Yataimura (food stands) at lunchtime and the monthly Oedo Antique Market, as well as serving as a location for many magazine shoots and television drama filming.

hall A Hall A



Hall A features 5,012 seats and two-tiered audience seating, making it one of the largest theaters in Japan and the venue of choice for a wide range of large-scale events, from international conferences and ceremonies to concerts and other live performances by major artists from Japanese and overseas.

hall B 5,7 Halls B7 & B5



Hall B7 (B Block/7th floor)
Hall B7 boasts a 1400 m² space completely free of columns, making it an incredibly versatile venue for hosting conferences, exhibitions, fashion shows, and other such events.

Hall B5 (B Block/5th floor)
Hall B5 has a sophisticated look created by blending traditional Japanese décor with a touch of modern aesthetics in a 600 m² interior space. One of its many charms is the gorgeous view it affords from the lobby.

hall C Hall C



Hall C features a three-tiered audience seating with a total of 1,502 seats. Made from Chinese quince (karin) wood in the image of a violin with chic interior hues, it is a popular venue for fans of classical concerts and musicals as well.

hall D 1,5,7 Halls D7, D5 & D1



Hall D7 (D Block/7th floor)
Hall D7 is a 340 m² space featuring the state of the art lighting and audio equipment, where a wide range of experimental events can be held. It can be freely used for seminars and exhibitions to concerts and fashion shows.

Hall D5 (D Block/5th floor)
The 285 m² Hall D5 features an interior finished with granite and wood and a floor-to-ceiling glass wall at the front, giving it a fresh and open feel.

Hall D1 (D Block/1st floor)
The 137 m² Hall D1 is located in the 1st floor of the D Block, which is the closest to JR Yurakcho station, making it extremely convenient for access by visitors.

Basement Concourse[B1F]



The basement concourse connects visitors with all facilities on site, and provides access to the subway and JR lines. It also has a convenience store, cafes and restaurants.

Hall E [B2F]



The 5,000 m² Hall E spans from the B2F to the B1F with a high ceiling, creating an open space with natural light that can accommodate a diverse range of events such as exhibitions and trade fairs, commercial fairs and receptions.

Parking Lot [B3F]

	For Cars	For Motorcycles
Opening Hours	7:00~23:30, 365days a year	
Capacity	417 (Including 7 parking spaces for disabled persons)	10
Fee (including Tax)	¥200/30 min.	¥100/1 hour
On Monday through Friday (excluding national holidays and the year-end/New Year holidays) between 7:00 and 23:30, parking for more than 5 hours but less than 10 hours	¥2,000- ※Times in excess of 10 hours will incur an additional ¥200 per 30 min.	¥500- ※Times in excess of 10 hours will incur an additional ¥100 per hour.

Recommended Route

Now we will introduce to you some of the recommended spots to see at the Tokyo International Forum. Why not take a walking around the Forum and enjoy all that this unique building has to offer, such as its open spaces enveloped in sunlight and artworks. You may discover something new and exciting!

1 Stone Monument of the Former Tokyo Prefectural Office Buildings

This stone monument marks the Former Tokyo Prefectural Office Buildings, which is a Tokyo City Historic Relic and the site of the Tokyo International Forum.



2 Ota Dokan Statue

(Created by the sculptor Fumio Asakura in 1957)

Ota Dokan was a superior samurai commander who built Edo Castle (now the Imperial Palace) in 1457. This statue was erected as the symbol of the former Tokyo Metropolitan Government Buildings. Even now, it is positioned so as to gaze in the direction of the Imperial Palace.

Next to the statue, there are panels explaining the history of the warring period in the Kanto region and Ota Dokan's life. You can also enjoy displays such as a model of the Edo Castle and learn about the association between Ota Dokan and the castle.



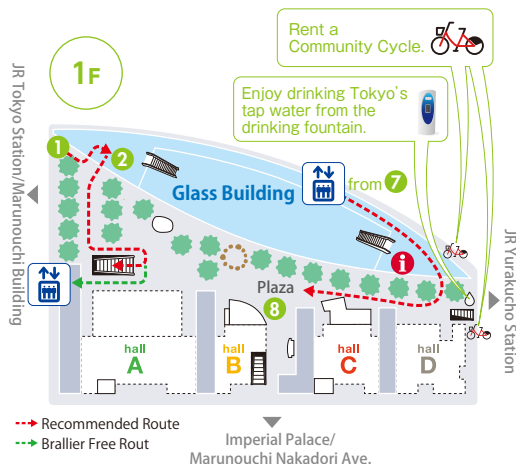
3 Basement Concourse [B1F] Central Bridge

The Central Bridge connects the Glass Building Lobby with the Basement Concourse. It divides the Hall E into two areas in an aerial configuration and is enclosed in glass walls on both sides, creating a 40m-long cuboid futuristic space that exudes a sense of tranquility.



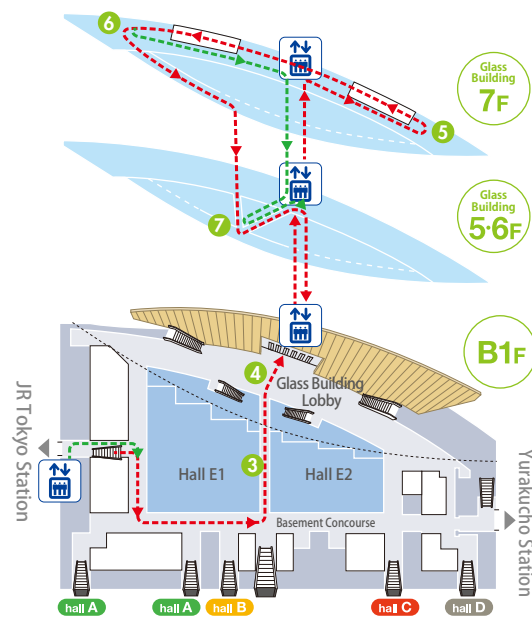
4 Glass Building [B1F] Glass Building Lobby

The total length of the Glass Building is 207 m. Its massive scale is even more evident when you look up at the nearly 60 m high ceiling from B1F. On the other side of the crystal-clear glass you can see the trees of the ground-level Plaza and white clouds drifting across the blue sky, making you feel like you are outdoors even though you are on the B1 floor.



5 Glass Building [7F] Glass Building Lounge

From the Glass Building (7F) Yurakucho side, you can enjoy both the scenery of Ginza and the Glass Building's large interior space. You'll also feel like you can almost reach the Glass Building's huge roof, which looks like the hull of a ship or a whale's belly. Outside the window, you can also see the artwork "Apron."



6 Glass Building [7F] Glass Building Lounge

The 7th floor Lounge is frequently used as a location for fashion magazine shoots and filming commercials. If you look toward the JR side from the lounge, you might see the Shinkansen (a bullet train) pass by. The Tokyo Sky tree is visible from the gap between some buildings.



7 Glass Building [6F/5F] Glass Building Bridge

As you cross the bridge from the elevator hall, you'll feel like you are floating in the middle of the large space of the Glass Building. (Not recommended for guests who are afraid of heights.)



Recommended Route (Time Required: Approx. 30 minutes.)

1 Stone Monument of the Former Tokyo Prefectural Office Building [1F]

Enter Glass Building

2 Ota Dokan Statue [1F]

Cross Plaza and take Keiyo Line exit stairs or elevator to B1F underground concourse.

3 Central Bridge [B1F]

4 Glass Building Lobby [B1F]

Take elevator to Glass Building 7F

5 Glass Building Yurakucho side [7F]

6 Glass Building Lounge [7F]

Go down the slope or take the elevators to Glass Building 6F or 5F
*Do not use the slopes with wheelchairs or strollers.
Please take the elevators.

7 Glass Building Bridge [6F/5F]

Take one of 2 elevators on right to 1F

8 Plaza [1F]

*Stops 5, 6, and 7 on the recommended route may not be open to visitors depending on the usage status at the time, etc.

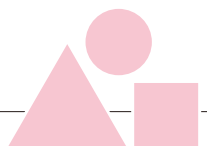
8 Plaza

This resting space, with Japanese Zelkova (keyaki) and Judas (katsura) trees, is a promenade that connects the streets to the Yurakucho Station, Tokyo Station, and Imperial Palace sides of the Forum. It has an open feel that is distinctive of the outdoors. Why not enjoy the breeze of the passing seasons while gazing at the artwork here?

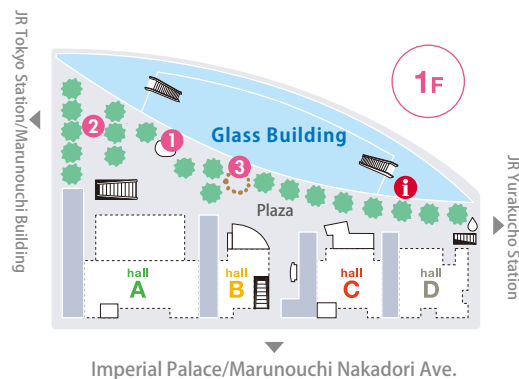


Art Work

The Tokyo International Forum houses a collection of unique artworks on the theme of "A Boat of Diversity." There are 134 works by 50 domestic and foreign artists including Yayoi Kusama, Isamu Noguchi and other renowned creators. This section provides an introduction to some installations on display for all visitors to the Forum.



Meeting Place



1 Plaza ISHINKI Kan YASUDA

Kan Yasuda is an artist working internationally, primarily in Italy and Japan. Even though this sculpture is made from marble, it has been crafted in such a way that it highlights the softness of the stones and invites the viewer to come closer and touch it.

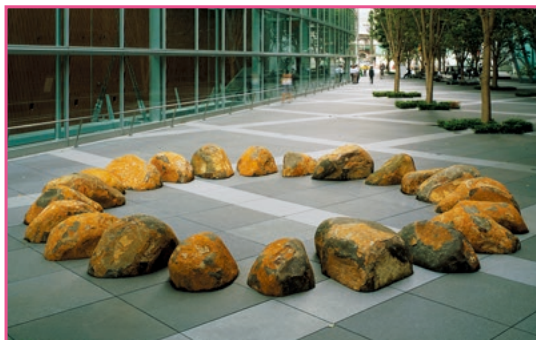
- Materials: Carrara white marble
- Size: 155.0×340.0×240.0cm
- Created in: 1991



2 Plaza BARCELONA BALLAD Anthony CARO

Sir Anthony Caro was the first artist to create a sculpture without the pedestal that many artists today use. This sculpture consists only of a frame, and is unique for its open view straight through it to the other side.

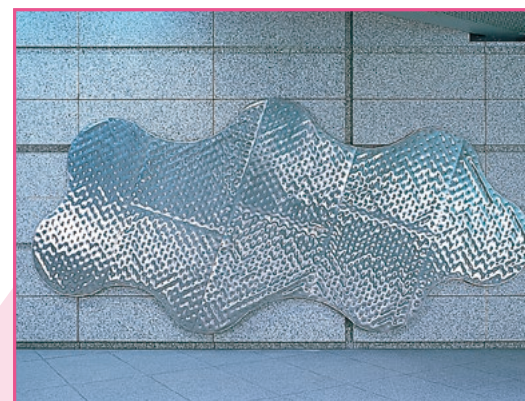
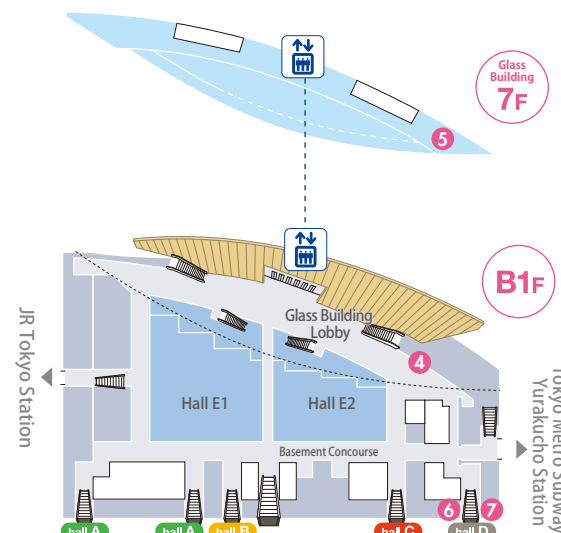
- Materials & Method: Steel rusted and waxed
- Size: 249.0×238.5×104.0cm
- Created in: 1987



3 Plaza HEMISPHERE CIRCLE Richard LONG

The plan for this artwork, which was commissioned especially for the Tokyo International Forum, was explained using an arrangement of boiled potatoes on a plate. Viewing it from outside the circle of stones, as well as from within, gives an interesting perspective. The creator of this artwork, Richard Long, is a laureate of the Praemium Imperiale in honor of Prince Takamatsu, and also a recipient of the Turner Prize.

- Materials: Japanese basalt
- Size: Outer diameter 754.0cm
- Created in: 1996



4 Glass Building Lobby[B1F] WHAT COULD MAKE ME FEEL THIS WAY... Richard DEACON

This artwork, which looks like a cloud or even a giant ameba, was originally designed to be displayed on the floor. However, it has been hung on the wall at the Forum so that it can be clearly seen in its entirety.

- Materials: Stainless Steel
- Size: 295.5×631.0×2.5cm
- Created in: 1993



5 Glass Building Lobby[7F] APRON Makoto ITO

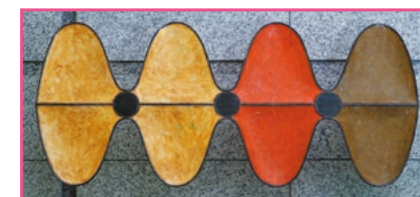
This bronze work was cast from an original FRP sculpture specifically for the Tokyo International Forum.

- Materials: Bronze
- Size: 88.0×293.0×46.0cm
- Created in: 1991/96



6 D Block[B1F-1F] Escalator-side wall HASTAKARA YANTARA John DUFF

- Materials & Method: painted fiberglass, steel
- Size: 211.5×126.5×9.5cm
- Created in: 1993



7 D Block[B1F-1F] Escalator-side wall ROBERTA' S TRAY John DUFF

- Materials & Method: painted fiberglass, steel
- Size: 103.5×242.0×48.2cm
- Created in: 1994

Construction of the Tokyo International Forum

The Tokyo International Forum was built on the site of the former Tokyo Metropolitan Government Office Buildings; it opened in January 1997. Japan's first official international design competition recognized by the International Union of Architects (UIA) was held in 1988 to seek design submissions for the Forum. The following year a design by the U.S. architect Rafael Vinoly was selected from among 395 designs submitted by architects from 50 countries. Under the direction of Mr. Vinoly, a large team of design staff, including from Japan, started work on the basic design for realizing his overall architectural vision. Construction of the Forum commenced in October 1992, and was completed in May 1996.



The Tokyo International Forum mainly consists of the Hall Building comprising 7 small-to-large-size halls, the Glass Building consisting of a symbolic glass atrium and 31 small-to-large-size conference rooms, and a Basement Concourse and Plaza that connects these two Buildings. The Hall Building stands neatly along the Marunouchi side on the west, while the Glass Building follows the curve of the JR train line on the eastern side. In the center of the site is the Plaza, which links together the three street sides of the Forum and provides an outdoor rest area for visitors.



The ship-like shape of the Glass Building was created by inverting the curved part of the site that follows the JR line. The approximately 2,600 glass panes comprising the walls of the Glass Building are made from 2 panes of 8mm double-strength glass for ensuring robust and clear walls. Meanwhile, the roof has around 1,000 multi-layer glass panes comprising 12mm thick reinforced glass and 10mm thick wire glass.

The roof of the Glass Building is supported by two large pillars, and inside the pillars are troughs for collecting rain water that falls on the roof and sending it to underground water storage tanks, as well as electric cables etc., running through them. The Glass Building Bridge runs above the Plaza towards the Hall Building as 3 interconnecting bridges, offering visitors easy access to the conference rooms in the Glass Building while using the halls in the Hall Building as the main venue.

The Glass Building has a vast air volume of 215,000m³, and so air conditioning the whole area would result in a huge loss of energy. Therefore, partial air conditioning is used only in the sections where people pass through, and it is combined with natural ventilation to control the air environment. In addition, the air and smoke ventilation window at the apex of the Glass Building can be opened as required during the peak of summer to let out warm air, enabling a comfortable temperature to be maintained inside even while only using partial air conditioning.



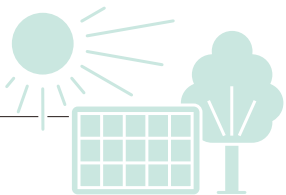
Walking on the slope that starts at the Glass Building Lounge on the 7th floor and continues down to the Tokyo Station side on the 1st floor provides an even more enjoyable view and greater appreciation of the Glass Building as an architectural work of art.

Gaze up at the clouds reflected on the Glass Building while relaxing in the lush and green Plaza, or enjoy the view of the illuminated floor and the Plaza and Glass Building lit up at night, and discover for yourself the wonders of the architectural masterpiece that is the Tokyo International Forum.



Overview of construction scale	
● Site Area	approx.27,000m ²
● Building Area	approx.21,000m ²
● Total Floor Area	approx.145,000m ²
● Glass Building	
Total Length	approx. 208m
Maximum Width	approx. 32m
Height	approx. 60m
Number of Glass Panes	approx. 3,600 panes
(Western side: approx. 1,800 panes,	
Eastern side: approx. 800 panes, Roof: approx. 1,000 panes)	

Eco-friendly Facilities – Tokyo International Forum



The Tokyo International Forum strives in various ways to leverage natural energy, use energy efficiently and create a comfortable environment.

1 Solar Power Generation System

Solar panels are installed on the roofs of the hall buildings. The power generated by the solar panels is converted into AC power and used in the buildings.

The solar panels, about 600 m² in area, generate 93 kW of power. This is equivalent to electricity used in nearly 50 general households.

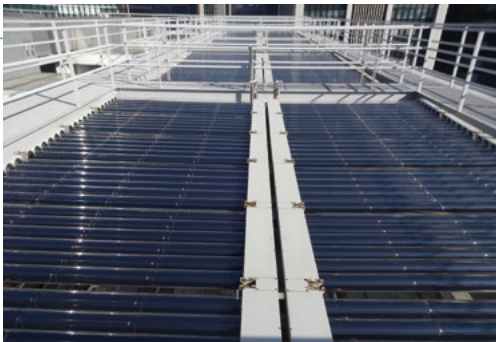


Solar panels

2 Solar Heat Collecting System

Apart from the solar power generation system, the roofs of the halls are also equipped with evacuated glass tube type solar thermal collectors. Water heated using solar heat is supplied to restrooms and showers in the buildings as well as restaurant kitchens.

The area of the heat collector is about 400 m² and the temperature is 85°C. The heat collected is sufficient to heat water in about 500 bathtubs to a temperature of 40°C.



Solar heat collectors

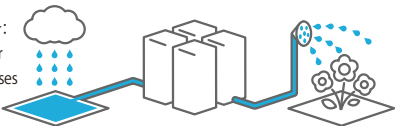
3 Waste Water Recycling System

Waste water generated in the buildings (water from washbasins or restaurant kitchens) or rain water falling on the premises is processed (biotreatment and membrane separation) in a waste water recycling system and used for flushing toilets, watering plants and melting snow accumulated on the roof of the Glass Building.



Waste water recycling facility

Utilization rate of recycled water:
About 90% of the water used for flushing toilets and other purposes (subject to seasonal variations)

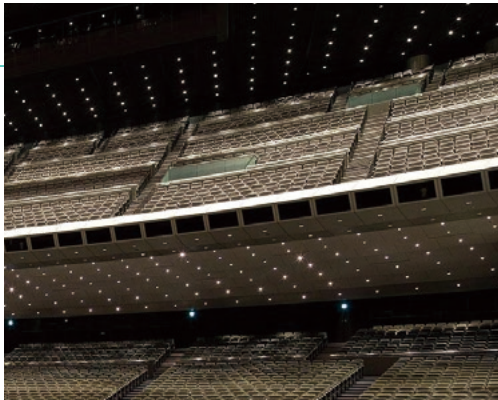


Watering of plants

4 Energy Saving in Lighting and Air Conditioning

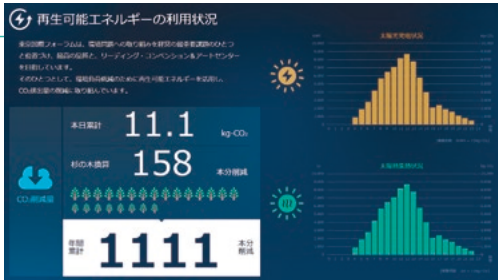
Lighting equipment in seating areas, lobbies, corridors and other spaces are being changed to LED lights, which consume less power and last longer. We are striving to save more energy by using highly energy-saving permanent magnet motors for air blowers and introducing a system that appropriately adjusts the intake of outdoor air for air conditioning.

The Tokyo Metropolitan Government has made reduction of carbon dioxide emissions mandatory for large-scale establishment in the city (obligation to reduce total carbon dioxide emissions). The Tokyo International Forum's achievements far exceed the reduction standards.



5 Energy Management System (EMS)

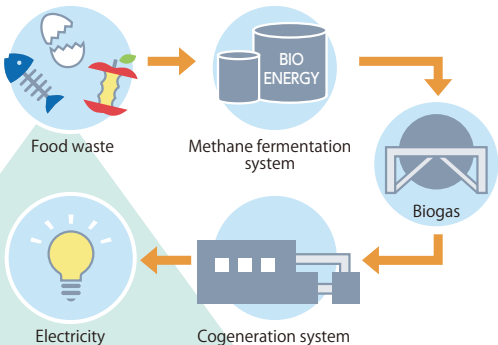
To save energy in the facilities while retaining comfort and convenience for visitors, we use the Energy Management System (EMS) for optimal air conditioning use and onsite equipment operations.



Screen showing usage of renewable energy

6 Food Waste Recycling

Food waste produced by the restaurants and catering in the facilities is recycled and transformed into electrical energy, etc. Collected food waste is transported to a recycling plant in Ota City where it is transformed into biogas via methane fermentation technology. Biogas is used in the factory's cogeneration system to produce energy in the form of electricity. Most of this electricity is then sold to the community surrounding the recycling plant. We also strive to thoroughly separate and reduce the amount of other garbage produced in the facilities.



Regular Events at the Plaza



The Plaza is a park-like open space between the Hall Buildings and the Glass Building. It is a lush green resting area spanning 9,700 m² and doubles up as a venue for events. This section provides an introduction to regular open-to-all events held at the Plaza.

Japan's largest outdoor antique market Oedo Antique Market

The Oedo Antique Market is the biggest outdoor antique market in Japan. It boasts of a large number of antique goods including Japanese pottery, Western tableware, kimono and sashes, and accessories to name a few, and attracts many visitors every time. With a rise in the number of foreign visitors in recent years, it is becoming popular for its international character.

Event Date

Twice every month

- * The event may be cancelled due to bad weather or other reasons.
- * Subject to schedule changes



Stylish and new flea market Best Flea Market

Any individuals can sell their stuff at the Best Flea Market. There is space for a maximum of 200 shops. Characterized by a sense of style and freedom, like flea markets in the West, this market offers more than just a place to recycle unwanted household goods. You can find a wide variety of things ranging from handmade products to antique goods.

Event Date

Once every month

- * The event may be cancelled due to bad weather or other reasons.
- * Subject to schedule changes



A popular beer garden in the city center Neo Yataimura Super Night

Surrounded by trees, the Beer Garden Neo Yataimura Super Night provides a soothing environment in middle of the city. 15~20 stylish food trucks gather to delight the visitors with diverse street foods, including ethnic food, at a reasonable price. With live stage performances to add to its attractions, this event receives a large number of visitors every time.

Event Date

Held usually in autumn every year

- * The event may be cancelled due to bad weather or other reasons.



Trivia of Tokyo International Forum

V-shaped white pillars are a special feature of Hall E. You might wonder why they are shaped this way. Considering the structure and the weight of the building, it is common to either erect pillars at every 9 m or use thick pillars. However, that would hamper the use of the space. Therefore, wide spaces were generated by erecting four pillars in V-shape at one spot and placing them 18 m away from each other to provide adequate support to the structure.

V-shaped Pillars



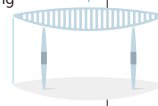
Boasting 5,012 seats, Hall A is one of the largest theater in Japan. It is used for large-scale events ranging from concerts to big international conferences. Incidentally, Tokyo International Forum has eight halls including Hall A and its 31 conference rooms can accommodate about 14,000 people.

5012

One of the biggest in Japan

The Glass Building's white roof stretches 208 m long and 31.7 m across at its widest point, with its steel frame weighing a whopping 2,500 tons! It is held up by two large pillars positioned 124 m apart.

2500 tons



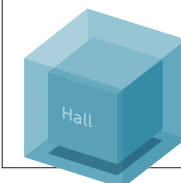
Tokyo water -Drink-all-you-can

To let people experience how good Tokyo tap water can taste, the Tokyo Bureau of Waterworks has installed Japan's first ever outdoor bottle-filling water dispenser in the Plaza. Anyone can use it to fill their own bottle or container with cold tap water, and it is becoming a popular spot among international tourists.



Box in a Box

The Tokyo International Forum is surrounded by subways. To prevent the vibrations from the subways from reaching the halls, the buildings are characterized by a "box in a box" construction as an optimal countermeasure against noise and vibration. In this construction, a floating box is built inside another box to achieve acoustic isolation.



Building

Made in Japan / Made in America

The walls of the Glass Building feature Japanese glass on the west side facing the Hall Building and American glass on the east side facing the JR lines. It makes you wonder if the American glass was placed where it can face its homeland.



Sloped ceiling

The second-floor lobby ceilings in Hall A and C slope downward toward the entrance side. That's because the theaters' floors slope downward toward their respective stages.



One of the biggest in the world

As one of the biggest classical music festivals in the world, La Folle Journée au Japon has been held every year since 2005 in the Marunouchi, Yurakucho, Otemachi area, with Tokyo International Forum as the center. This has become a familiar Golden Week tradition.

37 steps

The Tokyo International Forum is 37 steps* away from the International Forum exit of JR Yurakucho Station. Boasting easy accessibility, it can be reached within 5 minutes from JR Yurakucho Station and Tokyo Station, and Subway Yurakucho Station, Hibiya Station and Nijubashimae Station.

*This is a rough estimate.

3.0 seconds



This is the maximum reverberation time in Hall A. Famous concert halls with seating capacities of nearly 2,000 people and almost round shapes have a maximum reverberation time of roughly 2 seconds. To provide a similar acoustic environment in a rectangular hall with 5,012 seats, Hall A was equipped with cutting-edge architectural techniques and acoustic equipment. The reverberation time can be adjusted from 2.0 seconds to a maximum of 3.0 seconds (when seats are empty), offering an ideal acoustic environment.